



TOOLS@HEIGHT SLUGGING WRENCH RETAINERS

| Product Code | Stud Size | Length | C | D |
|--------------|-----------|---------|---------|---------|
| SWR-24 | 3/8 | 1 29/32 | 1 15/16 | 1 3/4 |
| SWR-28 | 7/8 | 2 | 2 3/16 | 1 29/32 |
| SWR-32 | 1 | 2 1/8 | 2 1/2 | 2 1/32 |
| SWR-36 | 1 1/8 | 2 1/4 | 2 1/2 | 2 5/32 |
| SWR-40 | 1 1/4 | 2 3/8 | 2 7/8 | 2 9/32 |
| SWR-44 | 1 3/8 | 2 15/32 | 3 1/8 | 2 3/8 |
| SWR-48 | 1 1/2 | 2 5/8 | 3 1/8 | 2 1/2 |
| SWR-52 | 1 5/8 | 2 3/4 | 3 5/8 | 2 21/32 |
| SWR-56 | 1 3/4 | 2 7/8 | 3 7/8 | 2 3/4 |
| SWR-60 | 1 7/8 | 3 | 4 1/2 | 2 7/8 |

Features

- SWR-SET includes one of each retainer in a plastic box.
- Retainers feature attachment point to prevent drop during use.
- Slugging Wrench Retainers thread onto the end of the stud over the slugging wrench to ensure the wrench stays affixed to the fastener
- A spring loaded plate allows for easy adjustment of the wrench without having to unscrew the retainer.
- Increased productivity and safer operation by eliminating the need for a second worker to hold and slugging wrench in place
- Available in 10 sizes, marked with stud sizes (not hex sizes)
- Configured to work with offset and straight handle slugging wrenches



Made in U.S.A.



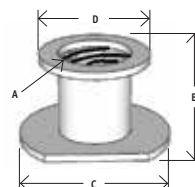
SWR-52



SWR-24



SWR-SET



TOOLS@HEIGHT FOLDING HEX KEY SETS

SAE and Metric

| Product Code | WS-45-TH | | WS-46-TH | | MWS-47-TH | |
|------------------|-------------------|---------------------|-------------------|---------------------|------------------------|---------------------|
| Number of Pieces | 8 | | 9 | | 7 | |
| | Hex Size (Inches) | Key Length (Inches) | Hex Size (Inches) | Key Length (Inches) | Includes Hex Size (MM) | Key Length (Inches) |
| | .050 | 1 1/4 | 5/64 | 1 1/2 | 1.5 | 1 3/8 |
| | 1/16 | 1 3/8 | 3/32 | 1 9/16 | 2 | 1 1/2 |
| | 5/64 | 1 1/16 | 7/64 | 1 11/16 | 2.5 | 1 5/8 |
| | 3/32 | 1 9/16 | 1/8 | 1 15/16 | 3 | 1 3/4 |
| | 7/64 | 1 5/8 | 9/64 | 2 | 4 | 2 |
| | 1/8 | 1 11/16 | 5/32 | 2 1/4 | 5 | 2 1/4 |
| | 9/64 | 1 13/16 | 3/16 | 2 1/2 | 6 | 2 1/2 |
| | 5/32 | 2 | 7/32 | 2 5/8 | | |
| | | | 1/4 | 2 7/8 | | |



WS-45-TH

Features

- Steel case is chrome plated to resist corrosion.
- Keys are black oxide finish.
- Convenient item for pocket or tool box.
- Modified to prevent disassembly during use.



Made in U.S.A.



TOOLS@HEIGHT METAL HANDLE CLICK TYPE TORQUE WRENCHES - DUAL SCALE

Metal Handle Dual Scale. The metal handle series offers the user a rugged, industrial strength torque wrench able to withstand the rigors of professional use. Handles are lightly knurled for a tough, non-slip grip. There are 21 models of metal handle micrometer adjustable torque wrenches available.

| Product Code | Drive Size | English Range | Incr. | Nm Range | Incr. | A in. | B in. | C in. | D in. | Wt. Lbs. |
|--------------|------------|-----------------|-------|------------|-------|-------|-------|-------|-------|----------|
| 2503MFRMH-TH | 1/2" | 30-250 ft. lb. | 1 | 47-332 Nm | 1.4 | 24.40 | 1.70 | 1.40 | 1.40 | 4.73 |
| 6004MFRMH-TH | 3/4" | 100-600 ft. lb. | 5 | 169-779 Nm | 6.8 | 42.00 | 2.50 | 2.00 | 1.15 | 7.85 |

Features

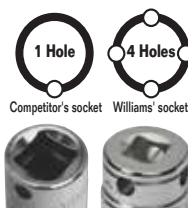
- Dual scale, calibrated dual direction
- Positive lock with spring loaded pull down lock ring
- Fast, accurate and easy to set
- Easy-to-read laser marked scales
- Most feature quick release buttons which provide good socket retention as well as easy socket removal
- Accuracy: $\pm 3\%$ CW $\pm 4\%$ CCW of indicated value, CW, from 20% to 100% of full scale
- Individually serialized with matching certificate of calibration traceable to N.I.S.T.



Made in U.S.A.



2503MFRMH-TH



Competitor's socket

Williams' socket

Williams T@H sockets, extensions, and adaptors feature a locking hole on all four sides, not just one. Williams T@H ratchets and drive tools feature a locking pin which mates with the side lock hole for positive retention. This reduces the risk of misaligning the socket that typical competitor's sockets with just one side hole create.

Release pin with WTHPRT - Pin Release Tool for Williams' Square Drive Tools

Do not use quick release tools with locking collars or push button release. These tools can be disengaged inadvertently.



WTHPRT



Be sure to use a lanyard that has more weight capacity than the tool you are attaching because drop forces are greater than actual tool weight.