



## PLEASE READ AND FOLLOW ALL WARNINGS



**Universal Tool**

UT2000 -1

1/4" MINI RATCHET

Read Operating Instructions  
Always become familiar with all the instructions and warnings before operating any power tool.



Always Wear Approved  
Eye Protection

Impact resistant eye protection should meet or exceed the standards as set forth in the United States ANSI Z87.1, Occupational and Educational Eye and Face Protection. Look for the marking Z87.1 on your eye protection to insure that it is an approved style.

For further information, ANSI Z87.1, Occupational and Educational Eye and Face Protection, is available from the American National Standards Institute, Inc., 11 West 42nd Street, New York, NY 10036.



Hearing Protection is  
Recommended

Hearing protection should be used when the noise level exposure equals or exceeds an 8 hour time-weighted average sound level of 85 dBA. Process noise, reflective surfaces, other tools being operated nearby, all add to the noise level present in your work area. If you are unable to determine your noise level exposure, we recommend the use of hearing protection.



Avoid Prolonged Exposure to  
Vibration

Tools can vibrate during use. Prolonged exposure to vibration or very repetitive hand and arm movements, can cause injury. Stop using any tool if discomfort, tingling feeling or pain occurs. You should consult your physician before resuming use of the tool.



90 PSIG Maximum  
This tool is designed to operate at

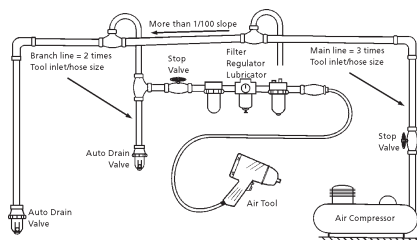
an air pressure of 90 pounds per square inch gauge pressure (90 PSIG) maximum, at the tool. Use of higher air pressure can, and may cause injury. Also, the use of higher air pressure places the internal components under loads and stresses they were not designed for, causing premature failure. The air supply should be clean and dry, preferably lubricated. For best results, drain the moisture from your compressor daily.

### WARNING:

Some dust created by power sanding, sawing, grinding, drilling, and other construction activities contains chemicals known to cause cancer, birth defects or reproductive harm. Some examples of these chemicals are:

- Lead from lead-based paints
- Crystalline silica from bricks, cement and other masonry products
- Arsenic and chromium from chemically treated lumber

Your risk from these exposures varies, depending on how often you do this type of work. To reduce your exposure to these chemicals, work in a well-ventilated area and work with approved safety equipment such as those dust masks that are specially designed to filter out microscopic particles.



### Description

The Universal 1/4" Mini Ratchet features lever throttle, full reverse and rear exhaust. Compact head design. Great for today's smaller cars, trim work, dashboards and motorcycle engines.



### Safety Instructions

The following instructions are furnished as general guidelines for use of your pneumatic tool. They cannot comprehensively cover all possible or conceivable uses of the subject tool. For additional information on the safe use of air tools, we advise you to obtain a copy of ANSI B186.1 Safety Code for Portable Air Tools, available from the following source:

American National Standards  
Institute, Inc.  
11 West 42nd Street  
New York, NY 10036.

The use of the word "shall" in the following instructions, indicates that adherence to the particular requirement is necessary to conform to ANSI B186.1.

### Tool Application and Use

Portable tools shall be used only for the purposes intended in their design and within the capacity for which they were intended and rated. It shall be the tool owner's and/or employer's responsibility to instruct each operator in the safe use of the tool. Tools shall not be used without guards and safety

devices as furnished by the manufacturer. Where an air tool is modified or altered, the modifier shall provide the safeguards to enable it to be safely used in the operations intended and to comply with any applicable provisions as contained in ANSI B186.1.

### Tool Installation

Pressure regulators shall be used to limit air pressure to the rated pressure where the supply pressure exceeds the tool's rated pressure. Air hoses and lines shall be relieved of compressed air before being disconnected or disjoined, unless there is automatic valve closing protection at the joint being separated. Synthetic lubricants which can cause deterioration of elastomer seals shall not be used in air systems of air tools.

### Tool Maintenance

It shall be the tool owner's and/or employer's responsibility to assure that tools are maintained in a safe operating condition. Tool maintenance and repair shall be performed by authorized, trained, competent personnel. Tools shall be disconnected from their compressed air supply before repairs are attempted. Repairs shall be consistent with the manufacturer's recommended procedures. Tool, hoses and fittings shall be replaced if unsuitable for safe operation. It shall be the tool owner's and/or employer's responsibility to keep required rating markings and warnings on the tool in legible condition.

Universal Tool  
A Division of Florida Pneumatic Manufacturing Corporation  
851 Jupiter Park Lane, Jupiter, Florida 33458  
Toll Free 1-800-327-9403

Read these instructions carefully before attempting to install, operate or service this Florida Pneumatic product. Failure to comply with the instructions could result in personal injury and/or property damage! Retain these instructions for future reference.

**FPMC**

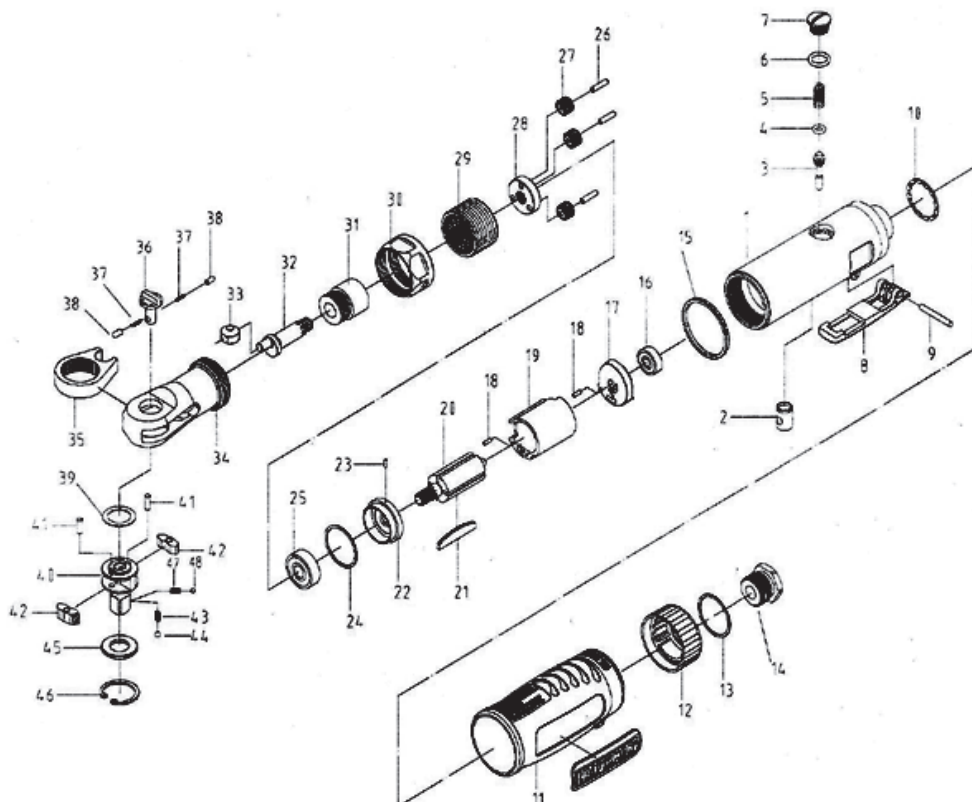
### Specifications

Free Speed RPM.....	250
Drive.....	1/4-in.
Max Torque.....	25 ft.-lbs.
Length.....	6.7 in.
Weight.....	1.3 lbs.
Air Inlet.....	1/4-in. NPT
Average Air Consumption.....	4.8 CFM
Maximum operating pressure.....	90 PSI

### Parts Breakdown for UT2000-1

#### USE ONLY POWER SOCKETS & ACCESSORIES

Sockets and accessories used shall be of the power socket type. Always check sockets, retainers and drives regularly for wear or damage and replace whenever necessary



### Parts List

Ref.	Part No.	Description	Qty.	Ref.	Part No.	Description	Qty.
1	9106503	Housing	1	26	9106528	Needle Roller	3
2	9106504	Valve Bushing	1	27	9106529	Planet Gear	3
3	9106505	Valve Stem	1	28	9106530	Idle Gear Seat	1
4	9150070	O-Ring	1	29	9106531	Internal Gear	1
5	9106507	Valve Spring	1	30	9106532	Clamp Nut	1
6	9106508	O-Ring	1	31	9106533	Bushing	1
7	9106509	Valve Screw	1	32	9106534	Crank Shaft	1
8	9106510	Throttle Lever	1	33	9106535	Drive Bushing	1
9	9106511	Throttle Lever Pin	1	34	9106536	Ratchet Housing	1
10	9106512	Washer	1	35	9106537	Ratchet Yoke	1
11	9106513	Handle Grip	1	36	9106538	Reverse Switch	1
12	9106514	Index Muffler Cover	1	37	9106539	Spring	2
13	9106515	Washer	1	38	9106540	Pin	2
14	9106516	Air Inlet Bushing	1	39	9106541	Washer	1
15	9106517	Ornamental Gasket	1	40	9106542-A	Ratchet Anvil	1
16	9106518	Ball Bearing	1	41	9106543	Pin	2
17	9106519	Rear End Plate	1	42	9106544	Ratchet Pawl	2
18	9106520	Dowel Pin	2	43	9106545	Spring	2
19	9106521	Cylinder	1	44	9106546	Steel Ball	2
20	9106522	Rotor	1	45	9106547	Washer	1
21	9106523	Rotor Blade	4	46	9106548	Retainer Ring	1
22	9106524	Front End Plate	1	47	9106549	Spring	1
23	9106525	Pin	1	48	9106550	Steel Ball	1
24	9106526	Washer	1				
25	9106527	Ball Bearing	1				

### Limited Warranty

Universal Tool warrants its tools to be free from defects in material and workmanship for one year from the date of purchase. This warranty does not apply to tools which have been abused, misused, modified or repaired by someone other than Universal Tool or its authorized service centers. If a Universal Tool proves defective in material or workmanship within one year after purchase, return it to any authorized service center or to Universal Tool, freight prepaid. Please enclose your name, address and adequate proof of purchase date with a brief description of the defect. Universal Tool will, at its option, repair or replace defective tools, free of charge. Repairs or replacements are warranted as described above for the remainder of the warranty period. Universal Tool's sole liability and your exclusive remedy under this warranty is limited to repair or replacement of the defective tool. There are no other warranties expressed or implied and Universal Tool shall not be liable for incidental, consequential or special damages, or any other damages, costs or expense of repair or replacement as described above.