

PLEASE READ AND FOLLOW ALL WARNINGS



UT1550S
STRAIGHT #5 SPLINE IMPACT WRENCH

Read Operating Instructions

Always become familiar with all the instructions and warnings before operating any power tool.



Always Wear Approved Eye Protection

Impact resistant eye protection should meet or exceed the standards as set forth in the United States ANSI Z87.1, Occupational and Educational Eye and Face Protection. Look for the marking Z87.1 on your eye protection to insure that it is an approved style. For further information, ANSI Z87.1, Occupational and Educational Eye and Face Protection, is available from the American National Standards Institute, Inc., 11 West 42nd Street, New York, NY 10036.



Hearing Protection is Recommended

Hearing protection should be used when the noise level exposure equals or exceeds an 8 hour time-weighted average sound level of 85 dBA. Process noise, reflective surfaces, other tools being operated nearby, all add to the noise level present in your work area. If you are unable to determine your noise level exposure, we recommend the use of hearing protection.



Avoid Prolonged Exposure to Vibration

Tools can vibrate during use. Prolonged exposure to vibration or very repetitive hand and arm movements, can cause injury. Stop using any tool if discomfort, tingling feeling or pain occurs. You should consult your physician before resuming use of the tool.



90 PSIG Maximum

This tool is designed to operate at

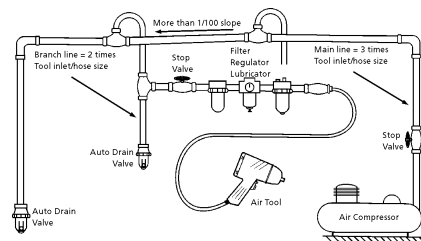
an air pressure of 90 pounds per square inch gauge pressure (90 PSIG) maximum, at the tool. Use of higher air pressure can, and may cause injury. Also, the use of higher air pressure places the internal components under loads and stresses they were not designed for, causing premature failure. The air supply should be clean and dry, preferably lubricated. For best results, drain the moisture from

WARNING:

Some dust created by power sanding, sawing, grinding, drilling, and other construction activities contains chemicals known to cause cancer, birth defects or reproductive harm. Some examples of these chemicals are:

- Lead from lead-based paints
- Crystalline silica from bricks, cement and other masonry products
- Arsenic and chromium from chemically treated lumber

Your risk from these exposures varies, depending on how often you do this type of work. To reduce your exposure to these chemicals, work in a well-ventilated area and work with approved safety equipment such as those dust masks that are specially designed to filter out microscopic particles.



Description

The Universal Tool professional tools feature alloy steel hammer cases that are machined from solid bar, not drawn or cast. The model number is laser etched on the hammer case for permanent identification. There is a high power to weight ratio, plus 100% parts interchangeability to the equivalent competitor's tool. The features include steel hammer case and three piece housing construction for ease of maintenance. Also included are an adjustable power regulator, ergonomic handle and a sound reducing muffler.



instruct each operator in the safe use of the tool. Tools shall not be used without guards and safety devices as furnished by the manufacturer. Where an air tool is modified or altered, the modifier shall provide the safeguards to enable it to be safely used in the operations intended and to comply with any applicable provisions as contained in ANSI B186.1.

Safety Instructions

The following instructions are furnished as general guidelines for use of your pneumatic tool. They cannot comprehensively cover all possible or conceivable uses of the subject tool. For additional information on the safe use of air tools, we advise you to obtain a copy of ANSI B186.1 Safety Code for Portable Air Tools, available from the following source:

American National Standards Institute, Inc.
11 West 42nd Street
New York, NY 10036.

The use of the word "shall" in the following instructions, indicates that adherence to the particular requirement is necessary to conform to ANSI B186.1.

Tool Application and Usage

Portable tools shall be used only for the purposes intended in their design and within the capacity for which they were intended and rated. It shall be the tool owner's and/or employer's responsibility to

Tool Installation

Pressure regulators shall be used to limit air pressure to the rated pressure where the supply pressure exceeds the tool's rated pressure. Air hoses and lines shall be relieved of compressed air before being disconnected or disjointed, unless there is automatic valve closing protection at the joint being separated. Synthetic lubricants which can cause deterioration of elastomer seals shall not be used in air systems of air tools.

Tool Maintenance

It shall be the tool owner's and/or employer's responsibility to assure that tools are maintained in a safe operating condition. Tool maintenance and repair shall be performed by authorized, trained, competent personnel. Tools shall be disconnected from their compressed air supply before repairs are attempted. Repairs shall be consistent with the manufacturer's recommended procedures. Tool, hoses and fittings shall be replaced if unsuitable for safe operation. It shall be the tool owner's and/or employer's responsibility to keep required rating markings and warnings on the tool in legible condition.

Universal Tool
A Division of Florida Pneumatic Manufacturing Corporation
851 Jupiter Park Lane, Jupiter, Florida 33458
Toll Free 1-800-327-9403

Read these instructions carefully before attempting to install, operate or service this Florida Pneumatic product. Failure to comply with the instructions could result in personal injury and/or property damage! Retain these instructions for future reference.

FPMC



UT1550S

STRAIGHT #5 SPLINE IMPACT WRENCH

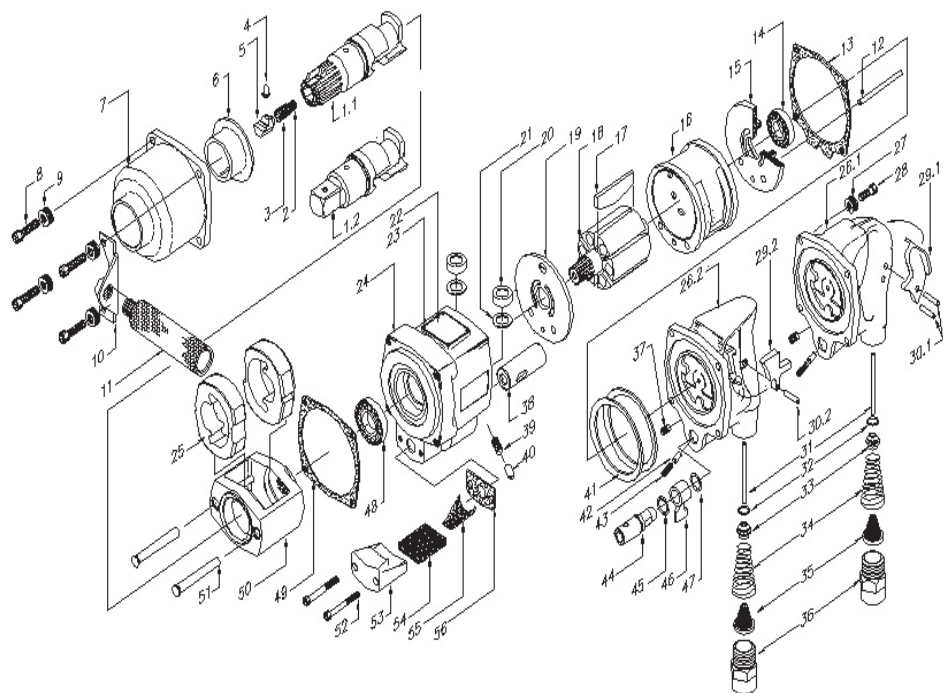
Specifications:

Shank	#5 Spline
Speed.....	3,750 RPM
Working Torque.....	725-2,500 ft. lbs.
Max. Torque	3,000 ft. lbs.
Weight.....	33. lbs.
Overall length.....	14.50"
Average air consumption.....	17.5 CFM
Recommended hose size.....	3/4" I.D.
Air inlet.....	1/2" NPT
Maximum operating pressure	90 psi

Parts Breakdown for UT1550S

USE ONLY IMPACT SOCKETS & ACCESSORIES

Sockets and accessories used shall be of the impact socket type. Always check sockets, retainers and drives regularly for wear or damage and replace whenever necessary



UT1550S

STRAIGHT #5 SPLINE IMPACT WRENCH

Replacement Parts for UT1550S

REF#	PART#	DESCRIPTION
1.1	2950-A526	SPLINE DRIVE ANVIL (INCL. #2, 3, 4, 5)
2	C-112202	INNER SPRING
3	C-112185	OUTER RETAINING SPRING
4	C-047620	LOCK BUTTON
5	C-112191	PLUNGER
6	2950-541	HAMMER CASE BUSHING
7	2950-A727	HAMMER CASE ASSEMBLY (INCL. #6)
8	2945-638	HAMMER CASE CAP SCREW
9	NL10	3/8 NORD LOCK WASHER
10	845-364	BRACKET
11	834-48	ASSIST HANDLE
12	2950-98	CYLINDER DOWEL PIN
13	850-283	HANDLE GASKET
14	834-24	BALL BEARING
15	2950-12	REAR END PLATE
16	2950-3	CYLINDER
17	2950-42	VANE
18	2950-53	ROTOR
19	2950-11	FRONT END PLATE
20	R44H-210A	AIRPORT GASKET
21	2940-200	GASKET RETAINER
22	2934-301	NAMEPLATE
23	N/A	NAMEPLATE RIVET
24	2950-A40	MOTOR HOUSING (INCL. #20, 21, 38)
25	2950-724	HAMMER
26.2	2950-A92	INSIDE TRIGGER HANDLE (INCL. #29.2, 30.2, 31, 33, 34, 35, 36, 37, 42, 43, 47)
27	NL8	5/16 NORD LOCK WASHER
28	834-638	HANDLE CAP SCREW
29.2	834-93	INSIDE TRIGGER
30.2	534-265	TRIGGER PIN
31	2950-302	THROTTLE VALVE PLUNGER
32	2934-159	O RING
33	2934-A50	THROTTLE VALVE (INCL. #32)
34	834-51	THROTTLE VALVE SPRING
35	834-61	AIR STRAINER
36	845-565	STRAIGHT INLET
37	130SR-188	GREASE FITTING
38	2934-330S	REVERSE VALVE BUSHING
39	4U-664	REVERSE LOCK SPRING
40	4U-663B	REVERSE LOCK PLUNGER
41	MR-207	MOTOR CLAMP WASHER
42	R2-75	OILER FELT
43	R2-71	OILER ADJUSTING SCREW
44	2934-A329	REVERSE VALVE (INCL. #45)
45	85H-167	O RING
46	2934-658A	REVERSE LEVER
47	R00BR-210	REVERSE VALVE SEAL
48	TA-22	BALL BEARING
49	845-36	HAMMER CASE GASKET
50	2950-A703	HAMMER FRAME (INCL. #51)
51	2950-704	HAMMER PIN
52	R43F-104	BACKHEAD CAP SCREW
53	2934-23A	EXHAUST DEFLECTOR
54	2940P-311	EXHAUST SILENCER
55	2934-124	EXHAUST BAFFLE
56	2934-223	EXHAUST GASKET

Limited Warranty

Universal Tool warrants its tools to be free from defects in material and workmanship for one year from the date of purchase. This warranty does not apply to tools which have been abused, misused, modified or repaired by someone other than Universal Tool or its authorized service centers. If a Universal Tool proves defective in material of workmanship within one year after purchase, return it to any authorized service center or to Universal Tool, freight prepaid. Please enclose your name, address and adequate proof of purchase date with a brief description of the defect. Universal Tool will, at its option, repair or replace defective tools, free of charge. Repairs or replacements are warranted as described above for the remainder of the warranty period. Universal Tool's sole liability and your exclusive remedy under this warranty is limited to repair or replacement of the defective tool. There are no other warranties expressed or implied and Universal Tool shall not be liable for incidental, consequential or special damages, or any other damages, costs or expense of repair or replacement as described above.