

PLEASE READ AND FOLLOW ALL WARNINGS



Universal Tool

UT1520S

STRAIGHT #5 SPLINE IMPACT WRENCH

Read Operating Instructions

Always become familiar with all the instructions and warnings before operating any power tool.



Always Wear Approved Eye Protection

Impact resistant eye protection should meet or exceed the standards as set forth in the United States ANSI Z87.1, Occupational and Educational Eye and Face Protection. Look for the marking Z87.1 on your eye protection to insure that it is an approved style. For further information, ANSI Z87.1, Occupational and Educational Eye and Face Protection, is available from the American National Standards Institute, Inc., 11 West 42nd Street, New York, NY 10036.



Hearing Protection is Recommended

Hearing protection should be used when the noise level exposure equals or exceeds an 8 hour time-weighted average sound level of 85 dBA. Process noise, reflective surfaces, other tools being operated nearby, all add to the noise level present in your work area. If you are unable to determine your noise level exposure, we recommend the use of hearing protection.



Avoid Prolonged Exposure to Vibration

Tools can vibrate during use. Prolonged exposure to vibration or very repetitive hand and arm movements, can cause injury. Stop using any tool if discomfort, tingling feeling or pain occurs. You should consult your physician before resuming use of the tool.



90 PSIG Maximum

This tool is designed to operate at

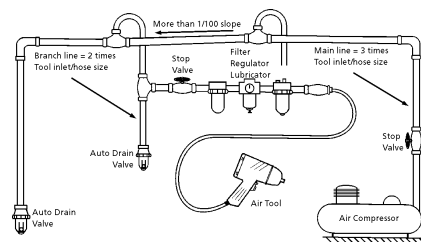
an air pressure of 90 pounds per square inch gauge pressure (90 PSIG) maximum, at the tool. Use of higher air pressure can, and may cause injury. Also, the use of higher air pressure places the internal components under loads and stresses they were not designed for, causing premature failure. The air supply should be clean and dry, preferably lubricated. For best results, drain the moisture from

WARNING:

Some dust created by power sanding, sawing, grinding, drilling, and other construction activities contains chemicals known to cause cancer, birth defects or reproductive harm. Some examples of these chemicals are:

- Lead from lead-based paints
- Crystalline silica from bricks, cement and other masonry products
- Arsenic and chromium from chemically treated lumber

Your risk from these exposures varies, depending on how often you do this type of work. To reduce your exposure to these chemicals, work in a well-ventilated area and work with approved safety equipment such as those dust masks that are specially designed to filter out microscopic particles.



Description

The Universal Tool professional tools feature alloy steel hammer cases that are machined from solid bar, not drawn or cast. The model number is stamped on the motor housing under the name plate for permanent identification. There is a high power to weight ratio, plus 100% parts interchangeability to the equivalent tool. The features include steel clutch housing and three piece housing construction for ease of maintenance. Also included are adjustable power regulators, ergonomic handles and sound reducing mufflers



instruct each operator in the safe use of the tool. Tools shall not be used without guards and safety devices as furnished by the manufacturer. Where an air tool is modified or altered, the modifier shall provide the safeguards to enable it to be safely used in the operations intended and to comply with any applicable provisions as contained in ANSI B186.1.

Tool Installation

Pressure regulators shall be used to limit air pressure to the rated pressure where the supply pressure exceeds the tool's rated pressure. Air hoses and lines shall be relieved of compressed air before being disconnected or disjoined, unless there is automatic valve closing protection at the joint being separated. Synthetic lubricants which can cause deterioration of elastomer seals shall not be used in air systems of air tools.

Tool Maintenance

It shall be the tool owner's and/or employer's responsibility to assure that tools are maintained in a safe operating condition. Tool maintenance and repair shall be performed by authorized, trained, competent personnel. Tools shall be disconnected from their compressed air supply before repairs are attempted. Repairs shall be consistent with the manufacturer's recommended procedures. Tool, hoses and fittings shall be replaced if unsuitable for safe operation. It shall be the tool owner's and/or employer's responsibility to keep required rating markings and warnings on the tool in legible condition.

Safety Instructions

The following instructions are furnished as general guidelines for use of your pneumatic tool. They cannot comprehensively cover all possible or conceivable uses of the subject tool. For additional information on the safe use of air tools, we advise you to obtain a copy of ANSI B186.1 Safety Code for Portable Air Tools, available from the following source:

American National Standards Institute, Inc.
11 West 42nd Street
New York, NY 10036.

The use of the word "shall" in the following instructions, indicates that adherence to the particular requirement is necessary to conform to ANSI B186.1.

Tool Application and Usage

Portable tools shall be used only for the purposes intended in their design and within the capacity for which they were intended and rated. It shall be the tool owner's and/or employer's responsibility to

Read these instructions carefully before attempting to install, operate or service this Florida Pneumatic product. Failure to comply with the instructions could result in personal injury and/or property damage! Retain these instructions for future reference.

Universal Tool
A Division of Florida Pneumatic Manufacturing Corporation
851 Jupiter Park Lane, Jupiter, Florida 33458
Toll Free 1-800-327-9403

FPMC



Universal Tool

UT1520S

STRAIGHT #5 SPLINE IMPACT WRENCH



Universal Tool

UT1520S

STRAIGHT #5 SPLINE IMPACT WRENCH

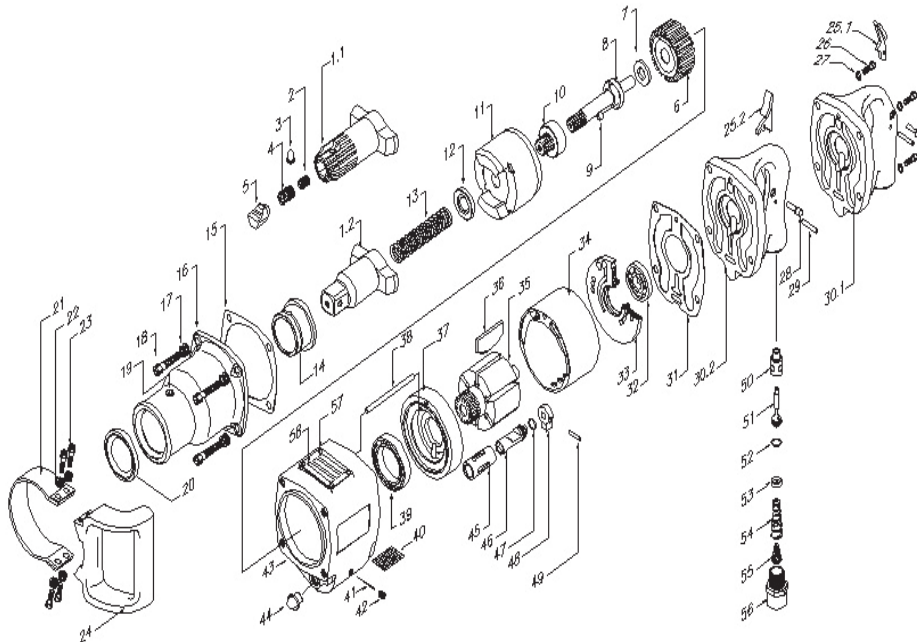
Specifications:

Shank	#5 Spline
Speed.....	4,500 RPM
Working Torque.....	725-2500 ft. lbs.
Max. Torque	3,500 ft. lbs.
Weight.....	33.7 lbs.
Overall length.....	14.7 in.
Average air consumption.....	15 CFM
Recommended hose size.....	1/2" I.D.
Air inlet.....	3/4" NPT
Maximum operating pressure	90 psi

Parts Breakdown for UT1520S

USE ONLY IMPACT SOCKETS & ACCESSORIES

Sockets and accessories used shall be of the impact socket type. Always check sockets, retainers and drives regularly for wear or damage and replace whenever necessary



Replacement Parts for UT1520S

INDEX #	PART #	DESCRIPTION
1.1	C-117069	SPLINE DRIVE ANVIL (INCL. # 2, 3, 4, 5)
2	C-112202	INSIDE SPRING
3	C-047620	LOCK BUTTON
4	C-112185	OUTSIDE SPRING
5	C-112191	PLUNGER
6	C-117061	COUPLING
7	C-117051	THRUST WASHER
8	C-117067	TIMING SHAFT
9	P-004254	BALL
10	C-117060	CAM DOG
11	C-117068	DOG
12	C-117051	SPRING SEAT
13	C-117054	SPRING
14	C-117053	CLUTCH HOUSING BUSHING
15	C-117049	CLUTCH HOUSING GASKET
16	C-117827	CLUTCH HOUSING
17	NL8	5/16" NORD LOCK WASHER
18	S-062777	SCREW
19	C-068064	PIPE PLUG
20	C-117576	GREASE SEAL
21	C-119061	ASSIST HANDLE BAND
22	NL6	1/4" NORD LOCK WASHER
23	P-073025	SCREW
24	CA-048548	ASSIST HANDLE
25.2	C-063747	INSIDE TRIGGER
26	S-062777	SCREW
27	NL8	5/16" NORD LOCK WASHER
28	C-113758	TRIGGER PIN
29	P-072359	TRIGGER STOP PIN
30.2	C-117866	INSIDE TRIGGER HANDLE (INCL. # 50)
31	C-117050	MOTOR HOUSING GASKET
32	C-075812	BALL BEARING
33	C-120682	UPPER END PLATE
34	C-117064	CYLINDER LINER
35	C-117066	ROTOR
36	C-117056	ROTOR BLADES
37	C-120683	FRONT END PLATE
38	C-117048	DOWEL PIN
39	C-117047	BEARING
40	C-120076	AIR SCREEN
41	CA-094316	OIL METERING PIN
42	C-059641	PIPE PLUG
43	C-117072	MOTOR HOUSING
44	C-119253	EXHAUST DEFLECTOR
45	C-117057	REV. VALVE BUSHING
46	C-117065	REVERSE VALVE
47	S-082809	O RING
48	C-117058	REV. VALVE LEVER
49	CA-091533	ROLL PIN
50	C-106817	THROTTLE VALVE BUSHING
51	C-106825	THROTTLE VALVE
52	A-043001	O RING
53	C-106818	O RING RETAINER
54	C-088079	THROTTLE VALVE SPRING
55	C-087505	AIR SCREEN
56	C-094354	THROTTLE CAP
57	N/A	NAMEPLATE RIVETS
58	N/A	NAMEPLATE (INCL. # 57)

Limited Warranty

Universal Tool warrants its tools to be free from defects in material and workmanship for one year from the date of purchase. This warranty does not apply to tools which have been abused, misused, modified or repaired by someone other than Universal Tool or its authorized service centers. If a Universal Tool proves defective in material of workmanship within one year after purchase, return it to any authorized service center or to Universal Tool, freight prepaid. Please enclose your name, address and adequate proof of purchase date with a brief description of the defect. Universal Tool will, at its option, repair or replace defective tools, free of charge. Repairs or replacements are warranted as described above for the remainder of the warranty period. Universal Tool's sole liability and your exclusive remedy under this warranty is limited to repair or replacement of the defective tool. There are no other warranties expressed or implied and Universal Tool shall not be liable for incidental, consequential or special damages, or any other damages, costs or expense of repair or replacement as described above.