

**Mueller Streamline Co.****Address:** 8285 Tournament Dr., Suite 150

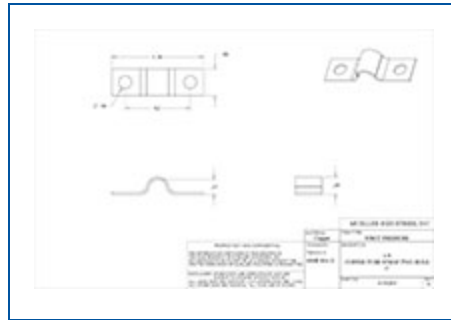
Memphis, TN 38125

Ph: 901-753-3200**Email:** contact@muellerindustries.com**Web:** <http://www.muellerindustries.com/>

Item # A 01203, Copper Tube Strap Two-Hole, C, 1/8"

Streamline® Copper Solder-Joint Fittings for supply/pressurized systems have been the leading brand of copper fittings for over 80 years. Available in both wrought copper and cast bronze, our product selection has grown to become the most extensive in the industry. We are the acknowledged experts at engineering and manufacturing precision solder-joint copper fittings. Quality, consistency and reliability have made the Streamline® brand trusted and specified all around the world.

- For use in above-ground potable water supply systems
- Constructed of high-grade copper or bronze materials
- Made to applicable ASME standards B16.15, B16.18, B16.22, B16.24, B16.50, B1.20.1
- Wrot fittings meet NSF 61G


[Specifications](#) | [Dimensions](#) | [Details](#)

Specifications	
Weight	0.005 lb
Material	WROT COPPER
Operating Temperature	CDA-Copper-Fitting-Pressue-Temp-Ratings
Operating Pressure	CDA-Copper-Fitting-Pressue-Temp-Ratings
End Size	1/8 in
Standards	NSF 61G ASME B16.15 ASME B16.18 ASME B16.22 ASME B16.24 ASME B16.50

ASME B1.20.1

Dimensions

Overall Length3.95 in

Overall Height0.26 in

Overall Width4.29 in

Details

StyleWS-1100

Qty Pcs / Bag100

Master Qty Pcs / Box4000

Mueller Description 11/8 NOM TUBE STRAP

Mueller Description 21/4 OD TUBE STRAP