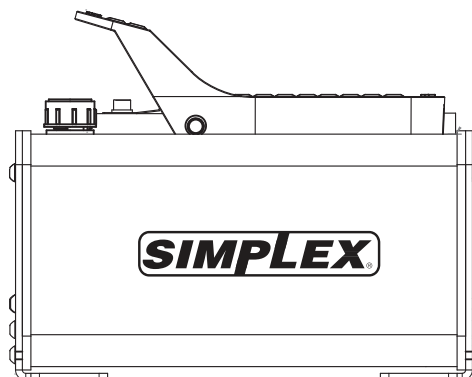
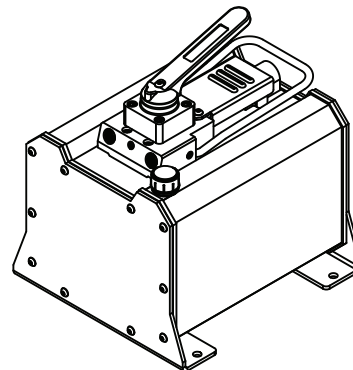
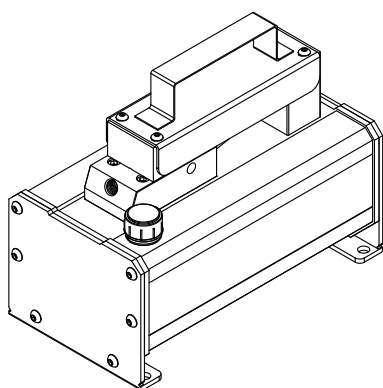




2525 GARDNER ROAD, BROADVIEW, IL 60155  
1.800.323.9114 • Outside U.S. 1.708.865.1500  
www.tksimplex.com

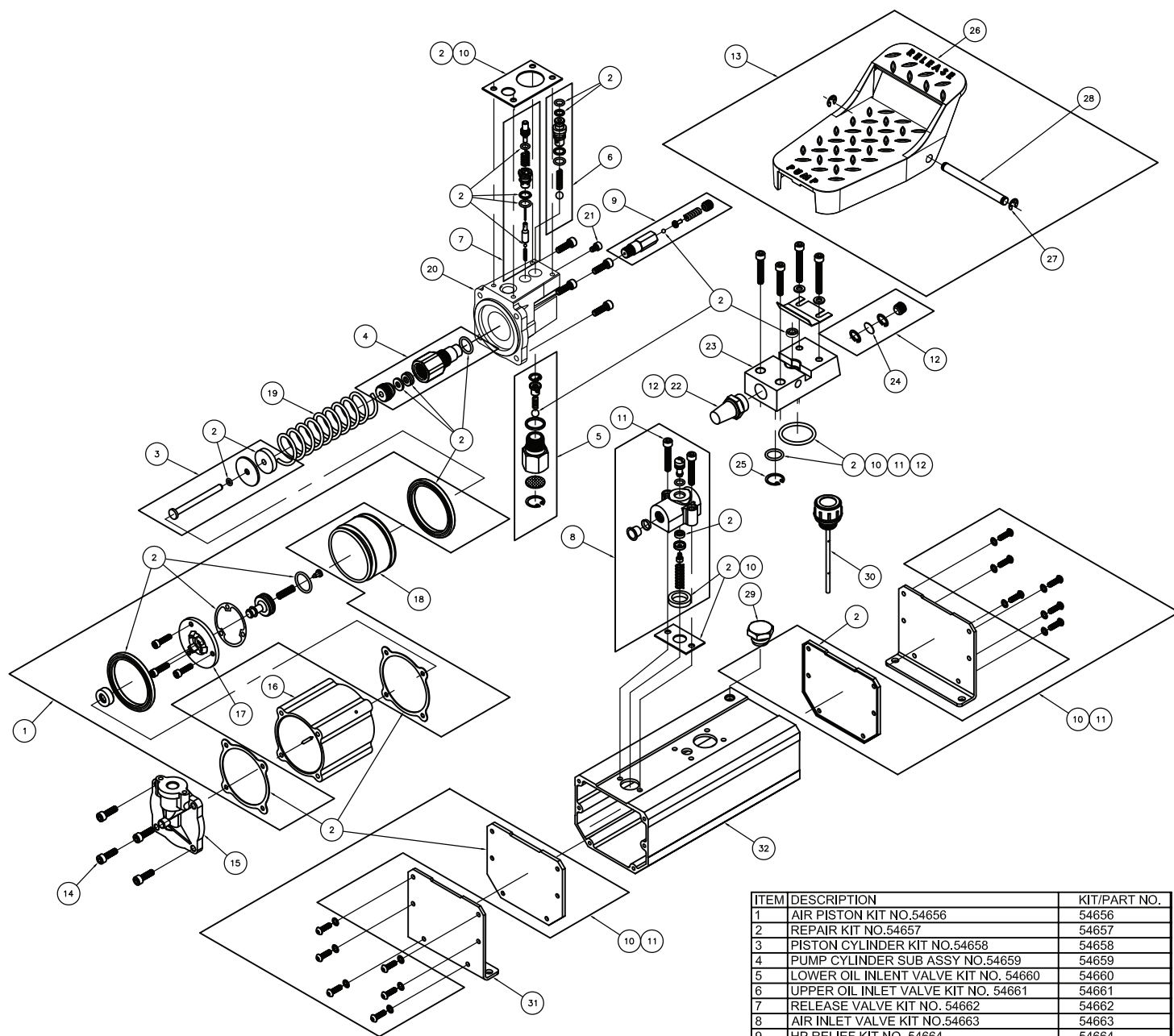
**GA90 SERIES  
COMPACT AIR POWER PUMP  
PARTS IDENTIFICATION MANUAL**  
Reference # - TD089  
Rev. - A  
Date - 07/11

*This illustration is for reference purposes only. The  
appearance of your unit may differ from the unit shown.*



# GA90 Compact Air Power Pump

## Common components used in pumps

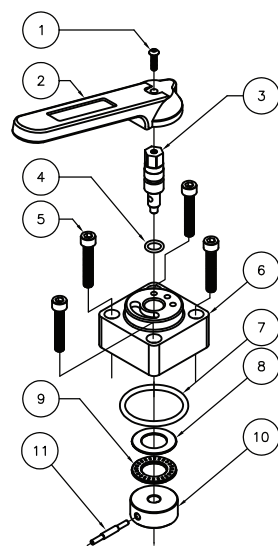


ITEM	DESCRIPTION	KIT/PART NO.
1	AIR PISTON KIT NO.54656	54656
2	REPAIR KIT NO.54657	54657
3	PISTON CYLINDER KIT NO.54658	54658
4	PUMP CYLINDER SUB ASSY NO.54659	54659
5	LOWER OIL INLET VALVE KIT NO. 54660	54660
6	UPPER OIL INLET VALVE KIT NO. 54661	54661
7	RELEASE VALVE KIT NO. 54662	54662
8	AIR INLET VALVE KIT NO.54663	54663
9	HP RELIEF KIT NO. 54664	54664
10	GASKET KIT NO. 54665	54665
11	DETENT KIT NO. 54666	54666
12	MANIFOLD KIT NO. 54667	54667
13	FOOT PEDAL KIT NO.54668	54668
14	BOLT-TOP CAP	DS1674242
15	TOP CAP	DS1675020
16	AIR PISTON A	DS1677051
17	AIR PISTON B	DS1678051
18	PISTON EXTENSION SPRING	DS1679710
19	MSG RUBBER FEET	DS1695054
20	BOLT-HYDRAULIC BASE	DS1681242
21	AIR FILTER	DS1682118
22	OIL OUTLET VALVE SEAT	DS1683290
23	FILTER	DS1684118
24	C-RING	DS1685049
25	OIL INLET CAP BOLT	DS1689242
26	AIR VENTILATION CAP BOLT	DS1690242
27	OIL COVER 230/460 CU.IN.	DS1500098
28	OIL COVER 92 CU.IN.	DS1691098
29	OIL CONTAINER (92 CU.IN.)	DS1692525
30	OIL CONTAINER (230 CU.IN.)	DS1693525
31	OIL CONTAINER (460 CU.IN.)	DS1694525
32	OIL CONTAINER (92 CU.IN.)	DS1694525

# GA90 Compact Air Power Pump

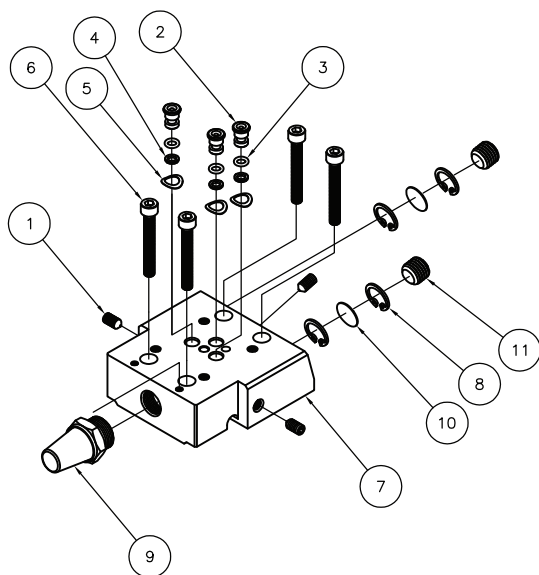
# Common components used in pumps

PART # 54671 DOUBLE ACTING MANUAL VALVE KIT  
(GA9230D // GA9460D)



ITEM	DESCRIPTION	QTY.
1	BOLT	1
2	VALVE CONTROL HANDLE	1
3	SWITCH WASHER	1
4	O-RING	1
5	BOLT	4
6	SWITCH COVER	1
7	O-RING	1
8	WASHER	1
9	BEARING WASHER	1
10	SWITCH VALVE	1
11	FIXED AXLE	1

PART # 54670 DOUBLE ACTING OIL OUTLET VALVE KIT PLATE  
(GA9230D // GA9460D)

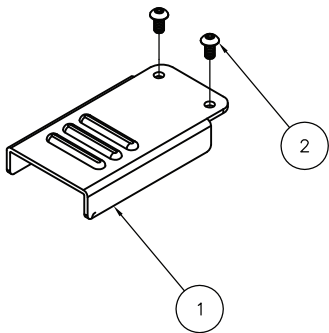


ITEM	DESCRIPTION	QTY.
1	BOLT	3
2	FLOW VALVE	3
3	O-RING	3
4	WASHER	3
5	WAVE WASHER	3
6	BOLT	4
7	OIL OUTLET VALVE SEAT	1
8	C-RING	2
9	AIR FILTER	1
10	FILTER	1
11	BOLT	2

# GA90 Compact Air Power Pump

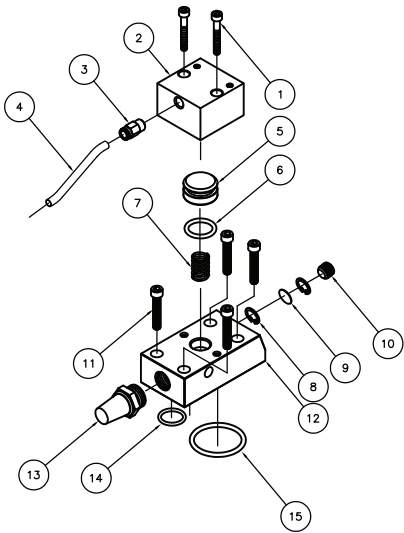
# Common components used in pumps

PART # 54669 REMOTE VALVE KIT PLATE  
(GA90R // GA9230R)



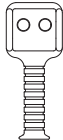
ITEM	DESCRIPTION	QTY.
1	VALVE PLATE	1
2	BOLT	2

PART # 54674 REMOTE OIL OUTLET PISTON KIT  
(GA90R // GA9230R)

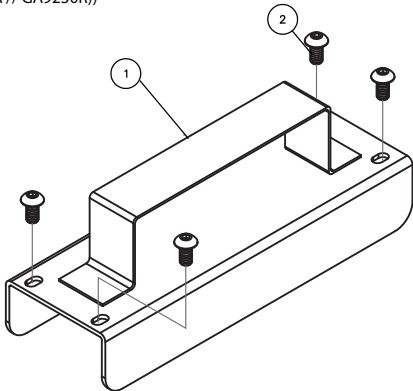


ITEM	DESCRIPTION	QTY.
1	BOLT	2
2	AIR PISTON COVER	1
3	AIR COUPLER	2
4	AIR HOSE	1
5	AIR PISTON	1
6	O-RING	1
7	SPRING	1
8	C-RING	2
9	FILTER	1
10	BOLT	1
11	BOLT	4
12	OIL OUTLET VALVE SEAT	1
13	AIR FILTER	1
14	O-RING	1
15	O-RING	1

NOTE: REPLACEMENT CONTROL PENDANT HOSE IS PART # 41965  
REPLACEMENT PENDANT CONTROL IS PART# 41950



PART # 54672 REMOTE HANDLE COVER KIT  
(GA90R // GA9230R)



HANDLE COVER KIT		QTY
1	HANDLECOVER	1
2	BOLT	4