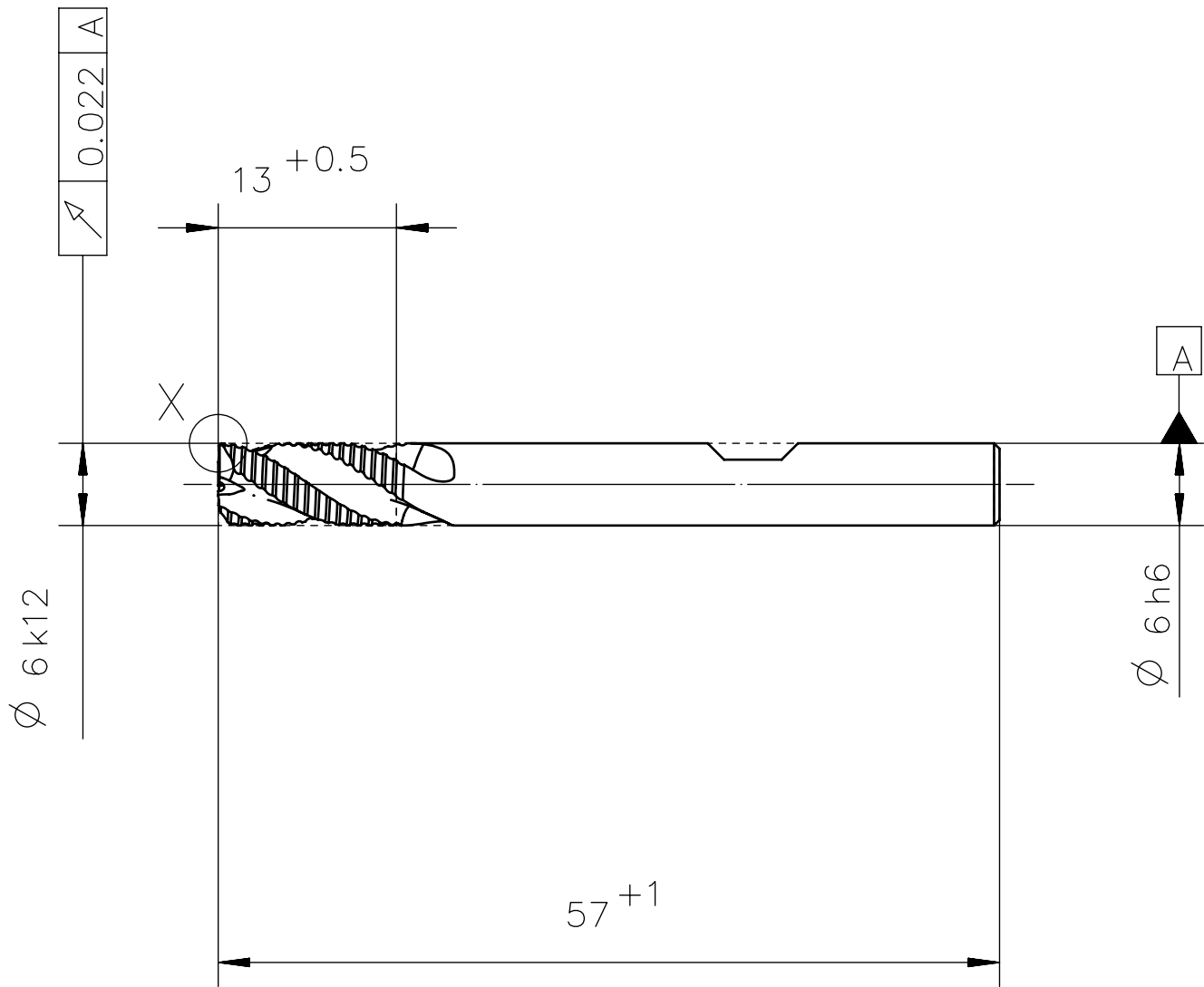
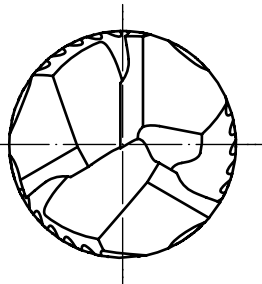


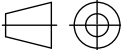

Characteristics:	
Number of teeth	3
Cutting direction	right
Spiral direction	right
Spiral angle	30+5
Type of face	center cut
Type of shank	DIN 6535 HB

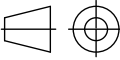


center cut



5:1

Qty.	Description				Det.	Dwg. No.		Material				
Proprietary Information DIN ISO 16016:2002–5 We reserve all Rights to this drawing including for the purpose of issuing patents and registration of petty patents. Without our written consent this drawing may not be copied, whole or partially, and may not be misused by the recipient as well as third parties. Any infraction will result in compensation for occurred damages and could lead to legal action by the author.									Scale: 2:1		Format: A3	
									Material: HSS–E–PM Surface: ACN			
						Date	Name		Description: Protostar HRA KORDEL F35 6 x 13			
					Drawn	14.02.13	PROTOTYP					
					Checked							
												
								Drawing–No.:				
								1P3120287–5074100		D10		
Rev.	Revision		Date	Name	Cust. No.:			Ord.–Code: P3120287–6				



WALTER
PROTOTYP