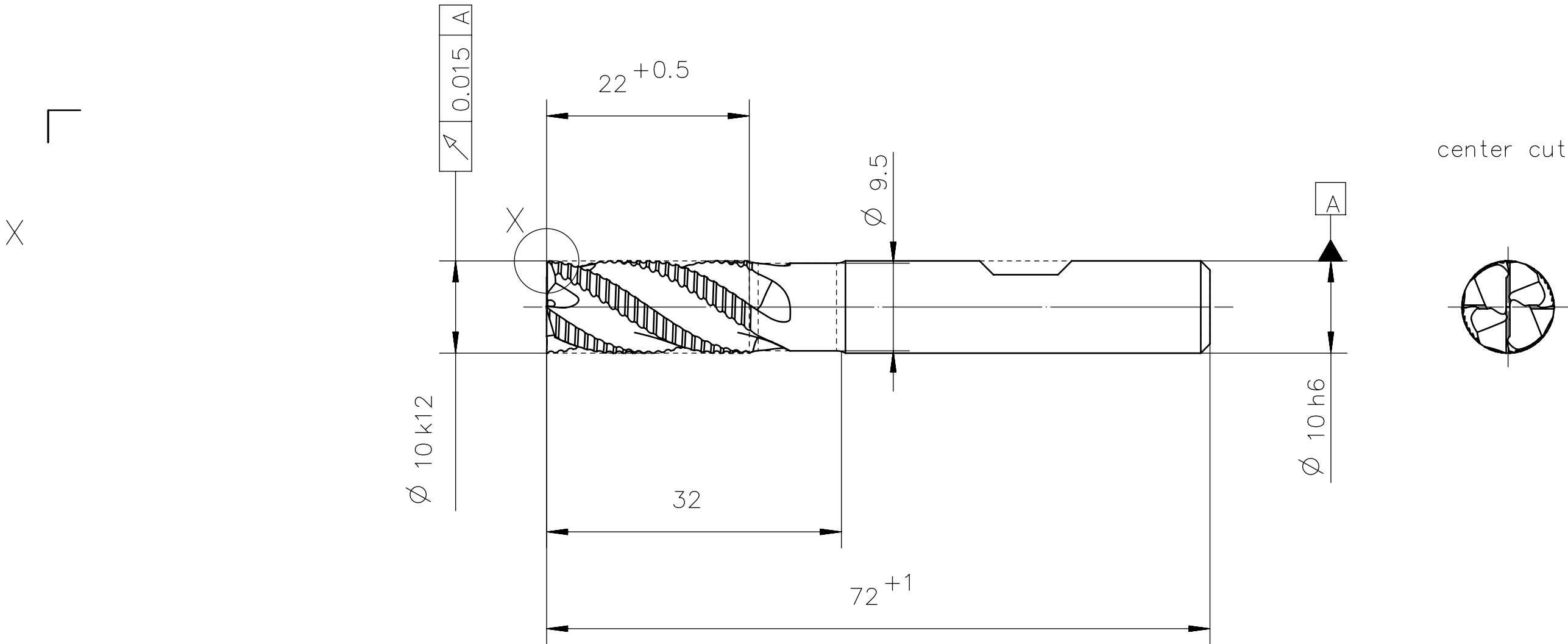
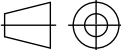




Characteristics:	
Number of teeth	4
Cutting direction	right
Spiral direction	right
Spiral angle	35
Type of face	center cut
Type of shank	DIN 1835 HB



Qty.	Description			Det.	Dwg. No.		Material				
Proprietary Information DIN ISO 16016:2002-5							Scale: 2:1		Format: A3		
We reserve all Rights to this drawing including for the purpose of issuing patents and registration of petty patents. Without our written consent this drawing may not be copied, whole or partially, and may not be misused by the recipient as well as third parties. Any infraction will result in compensation for occurred damages and could lead to legal action by the author.							Material: HSS-E-PM				
								Surface:			
					Date	Name		Description: Protostar HRA KORDEL F35 10 x 22			
				Drawn	14.02.13	PROTOTYP					
				Checked							
											
							Drawing-No.:			D10	
							1P312021-5074026				
Rev.	Revision		Date	Name	Cust. No.:		Ord.-Code: P312021-10				