

Mounted D-ring Anchorage Connector

Model: 410

Description

Anchorage Connectors are designed as the intermediary for securing a connecting device to an anchorage. Careful consideration should be given to selecting a proper anchorage for ultimate safety. The anchorage should be easily accessible, located a safe distance above any lower obstacles and support 5,000 lbs (22kN) per worker.

Materials

D-ring: Drop forged Alloy Steel;
Zinc plated

Ring Anchor Plate: 2-in. x 4-in. x 1/8 -in.
stainless steel

Hardware: Four (4) 3/8-in. (9.5mm)
diameter grade 5 bolts
(3 1/2 - in. long) with nut
and lockwasher

Weight: 1.2 lbs (.5kg)
* All hardware meets ASTM (50) fifty-hour salt spray
test requirements.

Technical

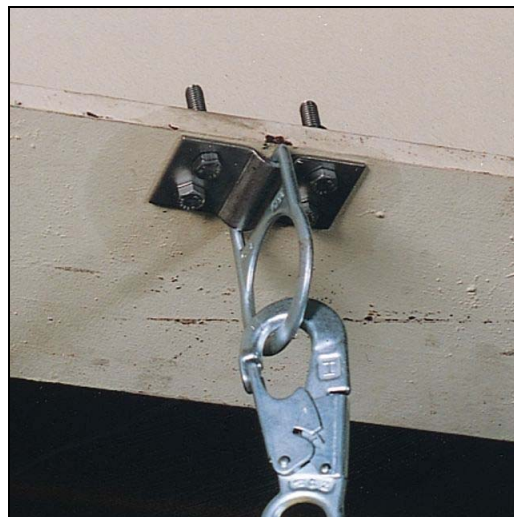
Max. Working Load: 400 lbs (181kg)

Tensile Strength: 5,000lbs (22kN)

Torque Specifications: 20 - 25 ft/lbs

Certifications

Meets OSHA 1910.66, OSHA 1926.502(d),
ANSI A10.32, and ANSI Z359.1 requirements.



Toll Free 800.873.5242 • Phone 814.432.2118 • Fax 800.892.4078 • www.millerfallprotection.com

WARNING! THIS DOCUMENT PROVIDES AN OVERVIEW OF FALL PROTECTION PRODUCTS AVAILABLE FROM MILLER FALL PROTECTION AND CARE HAS BEEN TAKEN TO ASSURE THE ACCURACY OF THE DATA. IT DOES NOT PROVIDE IMPORTANT PRODUCT WARNINGS AND INSTRUCTIONS. MILLER FALL PROTECTION RECOMMENDS ALL USERS OF FALL PROTECTION EQUIPMENT UNDERGO THOROUGH TRAINING, AND THAT ALL WARNINGS AND INSTRUCTIONS PROVIDED WITH THE PRODUCTS BE THOROUGHLY READ AND UNDERSTOOD PRIOR TO EACH USE. FAILURE TO READ AND FOLLOW ALL PRODUCT WARNINGS AND INSTRUCTIONS COULD RESULT IN SERIOUS INJURY OR DEATH.