

PROFESSIONAL BRAIDED MASON'S LINE

Bonded Braided Line

Strongest line available. Starts with braided line that is coated to create a stronger line. Bonding protects against abrasions, and strengthens the bond to hold knots.

Braided Line

Tightly braided line has a strong tensile strength. The unique braiding process increases elasticity and eliminates sagging. Strong line will not unravel even when struck.

Twisted Line

Economic nylon line with moderate stretch. Not as strong as braided. Prone to tangling and unraveling with extended use.



Braided Line



Twisted Line

Professional Braided Nylon Mason's Line

Professional masons and contractors ask for this quality, long wearing, tough, #18 braided line. Special braiding process **aids elasticity** and **eliminates sagging**. Nylon is **abrasion and alkali resistant**. Solid bright colors make it easy to see and use on job sites. 170 lb. test.



Yellow



Fluorescent Orange



Fluorescent Yellow



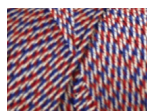
White



Green



Fluorescent Pink



"Patriot"



"Hunter"

250' Tube

No.	Color
BC334T	Fluorescent Orange
BC335T	Fluorescent Yellow
BC336T	White
BC337T	Green
BC338T	Yellow
BC333T	Fluorescent Pink
BC485T	"Patriot" Red, White, and Blue
BC486T	"Hunter" Green, Gold, and Brown

500' Tube

No.	Color
BC346	Fluorescent Orange
BC339	Fluorescent Yellow
BC340	White
BC341	Green
BC342	Yellow
BC355	Fluorescent Pink
BC487	"Patriot" Red, White, and Blue
BC488	"Hunter" Green, Gold, and Brown

1,000' Tube

No.	Color
BC360	Fluorescent Orange
BC359	Fluorescent Yellow
BC343	White
BC344	Green
BC345	Yellow
BC361	Fluorescent Pink
BC489	"Patriot" Red, White, and Blue
BC490	"Hunter" Green, Gold, and Brown

Professional Quality Braided Nylon Mason's Line with EZ-Winder

EZ-Winder makes unwinding and winding a snap
Kraft's quality mason's line spooled on a convenient and easy-to-use winder.

500' Winder

No.	Color
BC342W	Yellow
BC346W	Fluorescent Orange
BC352W	White and Black

1,000' Winder

No.	Color
BC360W	Fluorescent Orange

Ideal For:
Concrete,
Masonry,
General Construction,
Surveying,
Fence Building,
and Landscaping



Fluorescent Orange



Yellow



White and Black

Professional Mason's Line Winders

Free-spinning plastic winder holds line in place for easy dispensing. Comes with high quality 18# solid braided mason's line. Easy to see bright colors. 170 lb. test.

No.	Size	Color
BC332W	250'	Yellow
BC331W	250'	Fluorescent Orange
BC330W	250'	Green
BC329W	100'	Yellow
BC328W	100'	Fluorescent Orange
BC327W	100'	Green



Yellow

Fluorescent Orange

Green



Display with 24 Winders 500' Winder

No.	Color
BC342D	Yellow
BC346D	Fluorescent Orange
BC352D	White and Black





PROFESSIONAL BONDED BRAIDED MASON'S LINE



Orange and
Black



Green and
Black



White and
Black

PREMIUM Professional Bonded Braided Nylon Line

High Visibility Colors



This bright, fluorescent ultra strong bonded braided line is longer wearing. The extra elasticity helps eliminate sagging. The #18 nylon line has a black flecked braid. Special bonding process adds extra abrasion and alkali resistance. 170 lb. test.

500' Tube

No.	Color
BC354	Green and Black
BC353	Orange and Black
BC352	White and Black

1000' Tube

No.	Color
BC350	White and Black



W. Rose™
Professional
Masonry Tools
Pages 111-117

PREMIUM W. Rose™ Super Tough Professional Bonded Braided Nylon Line

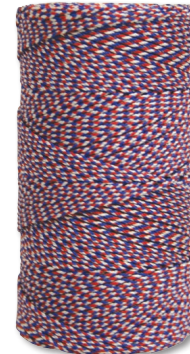
No Sag Line

High Visibility Colors

Professional quality, super tough, super strong. **35% stronger** than regular mason's line. #18 nylon line will not sag. Bonded for better knot holding and abrasion resistance. 216 lb. test.

685' Tubes

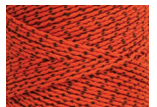
No.	Color
RO685	Yellow and Black
RO686	Orange and Black
RO687	"All American" Red, White, and Blue
RO688	"Camo" Camo Green, Gold, and Brown
RO689	Orange, Black, and Gold



"All American"
Red, White,
and Blue



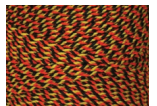
Yellow and
Black



Orange and
Black



"Camo"
Green, Gold,
and Brown



Orange,
Black, and
Gold

PREMIUM Professional Bonded Braided Nylon Line

General Purpose

Strong green line is the toughest in the business, withstands the punishing rigors of the construction and industrial trades. Strong, all purpose, abrasive resistant braided cord. General utility cord for fishing, outdoor and construction applications. Hard braided and specially bonded to resist tangling. Reliable waterproof hand line. Available in 1/2 lb, 1 lb, and 2 lb. tubes.

1/2 lb. Tube	(Approx.)
No.	# Test Yards
SS101132	132 160
SS101176	176 110
SS101240	240 85
SS101265	265 72
SS101315	315 60
SS101350	350 48

1 lb. Tube	(Approx.)
No.	# Test Yards
SS102132	132 320
SS102176	176 220
SS102240	240 170
SS102265	265 144
SS102315	315 120
SS102350	350 96

2 lb. Tube	(Approx.)
No.	# Test Yards
SS103265	265 288
SS103315	315 240



NEPTUNE by



White Green Yellow Flo. Flo. Flo.
Yellow Orange Pink

Contractor Twisted Mason's Nylon Line

This low-cost, twisted nylon line tests over 120 lbs. Not affected by mortar, oil, or mildew.

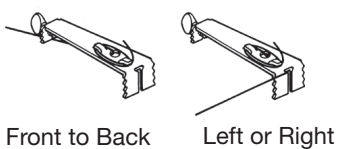
350' Tubes

No.	Color
BC347	White
BC348	Green
BC349	Yellow

350' Tubes

No.	Color
BC356	Fluorescent Yellow
BC357	Fluorescent Orange
BC358	Fluorescent Pink





Front to Back

Left or Right

U.S. Patent
#5,125,162

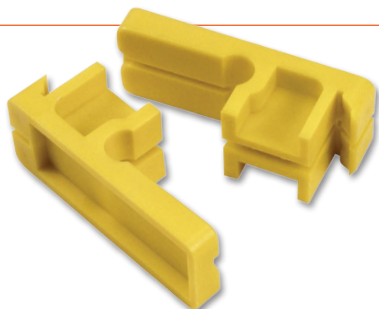
A

B

Brick Clips and Block Clips

This patented design on brick and block alignment clips are the quickest for setup and most portable line guides ever developed. The front of the clip has an irregular toothed surface and a thumb screw in the rear helps secure the clip.

No.	Description
A) BL250	4" Brick Clips (Pair)
B) BL251	2" Block Clips (Pair)



Tenite Line Blocks

Blocks grip the wall tightly and will not split or break. Made of hard tenite plastic. Sold only in pairs.

No.	Size
BL348	3-3/8" Bagged (Pair)
BL349	3-3/8" Bulk (Pair)

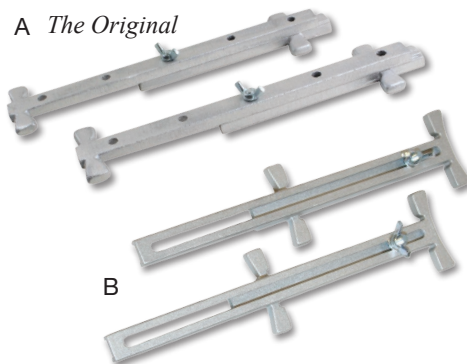


Wood Line Blocks

Hardwood grips the wall tightly to stretch the line. New pack quantity.

No.	Size
BL350-5PR	4"x1-1/4"x1-1/4" (5 Pairs)

A The Original



B

Adjustable Line Stretchers

2 Popular Styles

These aluminum line stretchers work on various size blocks from 4" to 12". Change size by moving bolt and wing nut to correct hole. Sold only in pairs.

No.
A) BL148 (Pair)
B) BL147* (Pair)



Aluminum Bricklayer's Corner Blocks

These aluminum corner blocks grip the wall tightly and will not break. Line wraps around stem, feeds through slot at the fork. The line pull holds the block at right angles to the brick. 2-1/2" stem lets you easily move the line up. Sold only in pairs.

No. BL253 (Pair)

Over Sized Line Block

Designed for use on bull nosed block. Can also be used on other types of block and brick. Sold individually.

No.	Size
BL242	4-1/2"x2"x1-3/4"



Concrete Block Line Stretchers

Stretches line tight between blocks. Can also be used as a winder to store line when not in use. Sold only in pairs.

No.	Size
BL343	4" to 6" (Pair)
BL342	6" to 8" (Pair)
BL341	8" to 12" (Pair)



Bricklayer's Line Pins

Made of tempered steel; stiff and long enough to hold the line. Each pin measures 4-1/2" long.

No.	Quantity	Imprint
BL158	4	Kraft Tool Co.®
BL159	200	Build With Masonry



Snap-Over Line Twigs / Trigs

Manufactured from spring steel. They snap around the mason's line and eliminate sagging.

No.	Size
BL156	4"x5/8" (14 Pack)



Wood Line Blocks

- Made of hardwood
- Grips the wall tightly
- Bagged in Pairs

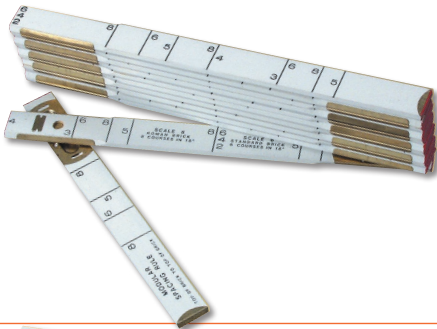
No.	Size
SLLB2	4"x1-1/4"x1-1/4" (Pair)



Sands® Professional Levels
Page 99-110



TAPES & BRICK RULES



Modular Rule

Lists modular spacings on one side; feet, inches, eighths and sixteenths on the other side. Ruler features six scales. First section is short for butting rule on first 16" module. Legs have square ends.

No. **Size**
BL512* 6' Wood



Spacing Rule

Thick hardwood rule lists ten course spacing on one side; has inches, eighths and sixteenths on other side. Markings at 16" for studs. Joints lubricated for smooth opening and closing.

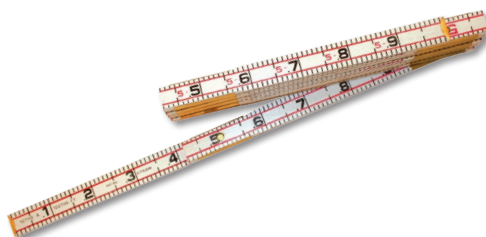
No. **Size**
BL167* 6' Wood



Brick Mason's Rule for King Size Brick

This mason's spacing rule is for oversized brick. The brick rule is designed with spacing starting at 2-7/8" and ranging to 3-1/2" in 1/16" increments. This brick spacing rule is identified with letter "A" through "K".

No. **Size**
BL169* 6' Wood



Engineer Folding Rule

Red end folding rule is the finest engineer rule made. Graduations: inside markings in feet, 16ths, 10ths, and 100ths of feet. Foot numbers in red, repeated each inch and 10th of a foot.

No. **Size**
GG320* 6' (Feet, 10ths, 100ths) 1066D Wood
GG322* 6' (10ths, Metric) 1066DM Wood
GG1066DF* 6' (Feet, 10ths, 100ths) Fiberglass®



Ammo Chalk Line Box

Heavy-duty 150' chalk line. Holds 1-1/2 lbs. of chalk. Moisture resistant easy refill lid. Great for paving contractors, highway departments, and landscape contractors. Order chalk separately (see page 88).

No. **Description**
GG302 Ammo Chalk Line Box
GG302-01 150' Replacement Line
GG317-48 Yellow Chalk, 48 lbs.



Mason's Tapes

16' **Spacing Tape** has space markings, and feet, inches on one edge of blade. **Modular tape** has modular markings for all common bricks; and feet, inches on one edge of blade.

No. **Size**
A) BL518* 16'x3/4" Spacing
B) BL519* 16'x3/4" Modular

General Contractor Pages 85-92

See our General Contractor section for:

- Measuring Tapes
- Chalk Boxes
- Chalk
- Hammers
- Safety Accessories
- Plus Lots More...





Poly-Lined Grout Bag

Poly-lined grout bag has a soft 3/8" tip molded in. Size of tip can be increased by cutting a small amount off with scissors. Ideal for use in grouting masonry or tile joints.

No.	Size
WL010	23"x13"



Metal Tip

Cone-Shaped Heavy-Duty Vinyl Bag

Cone-shaped heavy-duty vinyl bag comes complete with replaceable metal tip.

No.	Size
WL013	24"x10-1/2" Large
WL015	3/8" Replacement Metal Tip
WL014	28"x15" Giant
WL019	7/16" Replacement Metal Tip



Disposable Grout Bags

Eliminate clean-up with clear, disposable grout bags. Cut tip to desired opening or use with metal tip (WL015 and WL019 - sold separately). Sold per box of 50.

No.	Size
WL009*	11"x16" (Box of 50)
WL015	3/8" Metal Tip
WL019	7/16" Metal Tip



Without Lip

With Lip

Fortex® Pail

These popular Fortex® black rubber pails will not rust, dent, leak or chip. They are not affected by heat or cold, acids, alkalis or most other chemicals.

No.	Size	Description
GG460*	10 qt.	Standard
GG462*	12 qt.	Heavy-Duty with Lip
GG463*	12 qt.	Heavy-Duty
GG464*	18 qt.	Utility with Lip

Union Fiber Mason's Brush

General-purpose construction cleaning brush. Palmyra and Tampico fibers set in a 3" wood block. Tampico holds water and palmyra is excellent for scrubbing. Hang hole on the 4-1/2" handle. Overall length is 8-1/2" with 1-3/4" long bristles.

No. BL436



Bucket Brush

4" long white Tampico bristles set into a 6-1/4"x1-3/4" plastic head. A handy for tool clean up, applying paste, and many other uses. Hang device on side allows brush to be stored on bucket away from material. 7" plastic handle with hang hole.

No. BL527



Curved Handle Wire Brush

Round tempered wire on a wood block. Great for cleaning tools - removes rust, metal burrs, paint, and varnish. 4x18 rows of 1" trim on the 1" wide base. Hang hole for easy storage. 14" overall length.

No. BL467



Wire Duster Brush

Rounded tempered steel wire bristles on a 3" wood block. Great for dusting and removing metal chips. 9-1/4" overall length, with a 5-1/4" handle. 2-1/2" trim.

No. BL468



HKP® Centercut Bolt Cutters

Cut bolts chain, wrought iron, fencing, and more with this new and improved design. Double compound action cuts through the hardest material with ease. Precision engineered and induction hardened cutting blades. Tubular steel handles provide support with a hand grip for comfort.

No.	Weight	Length
GG118*	5 lbs.	18"
Capacities: Soft-Medium Metals 3/8", Hard Metals 9/32"		
GG119*	7 lbs.	24"
Capacities: Soft-Medium Metals 7/16", Hard Metals 5/16"		



HKP® Heavy-Duty Bolt Cutters

For general heavy-duty cutting of all soft or hard metals, including concrete reinforcing rods, hard wire rope, chrome ball wire, cold drawn alloy steel, stainless steel, and tempered spring wire up to Brinell 400 and Rockwell C42 hardness.

No.	Weight	Length
GG124	5 lbs.	24"
Capacities: soft metal 7/16" (11mm); hard 5/16" (8mm)		
GG136	13 lbs.	36"
Capacities: soft metal 9/16" (14mm); hard 7/16" (11mm)		
GG142	18 lbs.	42"
Capacities: soft metal 11/16" (17mm); hard 1/2" (13mm)		

Add "01" after part number for replacement jaws

Broom Handles

Must order handles separately from brush heads.

No.	Description
BL431	14" Tapered Wood Jam Handle
BL432	54" Tapered Wood Jam Handle
CC163	60" Metal Threaded Wood Handle
GG232	60" Metal Threaded Coated Steel Handle
CC263	60" Snap-Style 3-Piece Threaded Aluminum Handle

Heavy-Duty Acid Brush

Mason's like this brush because of the solid stock construction and greater holding capacity. Coarse 3" palmyra and tampico fibers securely attached to hardwood block. Uses tapered wood handle.

No.	Size
BL430	8-1/4"x2"

Standard Acid Brush

Use to wash down new and old masonry surfaces with muriatic acid. White tampico fibers are 6" wide, 1-3/4" thick, and 3-1/4" long. 5 rows thick for thorough coverage. Uses tapered wood handle.

No. BL422

Heavy-Duty Acid Brush

Long-wearing acid brush. The smooth finished hardwood block has 18 x 6 rows of stiff white tampico fiber bristles 1-1/4" long. Uses tapered wood handle.

No.	Size
BL525	8-1/4"x3"

Acid / Cleaning Brush

Ideal brush for cleaning equipment and other surfaces. 2-1/2" long plastic bristles are acid resistant. 10" plastic block. Uses threaded broom handle.

No. BL433

Large Heavy-Duty Acid Brush

Perfect for rough scrubbing or acid cleaning. Smooth 10"x3" hardwood block with 2" white tampico fibers. Uses threaded or tapered handles.

No. BL528

Nylex® Truck Brush

2-1/4" soft Nylex® brush for finishing concrete and exposing aggregate in decorative finishes. White bumper protects walls and edges. Use with threaded broom handles.

No.	Size
BL437	10"

Truck / Wash Brush

2-1/2" black and white flagged polystyrene bristles. Soft scrubbing action ideal to prep floors or use on vehicles. White bumper protects walls. Use with threaded handle.

No.	Size
BL435	10-1/2"

MASONRY BRUSHES

Jumbo Utility Brush

This red handle utility brush is a must for any professional. Long-wearing, 4" white tampico fibers can be used on masonry, brick, tile, and stone. A truly versatile brush.

No.	Size
BL526	6-1/2"x2" Block



Long Arm Acid Brushes

19-3/4" solid wood handle to keep your hands out of harmful materials. Bristles are heat, alkali, and acid resistant. 1-3/4" fiber gives just the right spring to the bristles. Brush face is 5"x3-1/2". Handle is smooth, tumbled block that is easy to grasp.

No.	Fiber
A) BL521	Palmyra
B) BL522	White Tampico
C) BL523	Plastic

Acid Brushes

Designed especially for use with acid and heavy scrubbing. Brush head measures 3"x4" with 2" trim. The 4-1/2" long handle allows for strong scrubbing action. 8-1/2" long overall.

No.	Fiber
A) BL119	Plastic
B) BL120	White Tampico



Deck Brush

Stiff blue filament is resistant to chemicals and holds solutions. Not affected by solvents or acids. Smooth 10"x3" hardwood block with 1-3/4" long bristles. Uses threaded or tapered handles.

No. BL529



Bricklayer's Brush

2-1/2" bristles keeps your projects neat and clean. Choose from medium or soft bristles.

No.	Size
BL428	13" Medium Grey Flagg
BL427	13" Soft Horsehair (shown)



Wire Brush and Scraper

1" long wires on a 6-1/4" head for removing paint. Includes 2-7/8" scraper for tough spots.

No. BL466



MORTAR BOXES



HEAVY-DUTY
10 CU. FT. CAPACITY

Steel Mortar Box

- #10 Gauge heavy-duty steel
- 6" forklift clearance
- Heavy-duty reinforced top lip
- Joints lapped with continuous welds for extra strength
- Weight: 166 lbs.

No. **Size**
BC210** 10 cu. ft.

**Must ship via truck

Inside Top Dimensions:
57" Length, 21" Width,
17-1/4" Height

Inside Bottom Dimensions:
39" Length, 21" Width



HEAVY-DUTY
10 CU. FT. CAPACITY

- Heavy-duty 10 gauge steel
- Easy turn heavy-duty 8" casters; two swivel with locking feature and two straight
- Reinforced 1" steel handle
- Joints lapped with continuous welds for extra strength
- 3-1/2" forklift clearance
- Weight: 260 lbs

No. **Size**
BC211** 10 cu. ft.
Mortar Box *with* Casters
BC211-01** 10 cu. ft.
Mortar Box *without* Casters

**Must ship via truck

Mud Dobber
MORTAR BOX
with Heavy-Duty Casters

Inside Top Dimensions:
45" Length, 22" Width,
18" Height

Inside Bottom Dimensions:
36 -1/2" Length, 22" Width



Poly Mortar Box

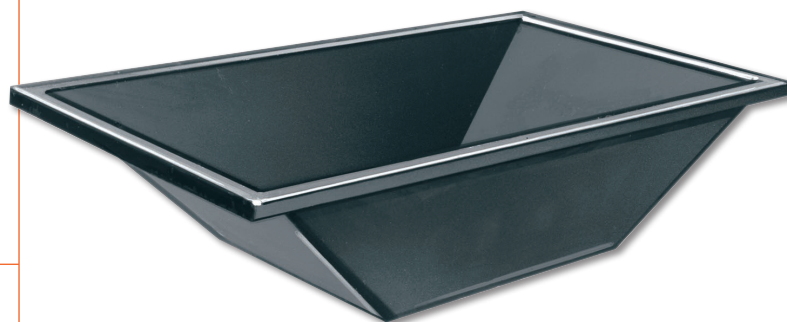
Durable poly mortar box holds 9 cubic feet of material. A reinforced top lip stands up to the rigors of use. Smooth interior is easy to clean. The lightweight material makes it easy to maneuver around a job site.

No.	Size	Gauge	Weight
BC218**	9 cu. ft.	350 mil	26 lbs.
BC218E**	9 cu. ft.	250 mil	19 lbs. NEW

**Must ship via truck

Inside Top Dimensions:
60" Length, 32" Width,
12" Height

Inside Bottom Dimensions:
34" Length, 23" Width



Steel Mortar Box

Steel mortar boxes made of heavy-duty 16 gauge steel. Smooth interior makes mixing easier. Leakproof construction.

No.	Size	Wt.
BC206**	50-1/2"x29"x12-1/2" (6 cu. ft.)	50 lbs.
BC209**	61-3/4"x33"x13" (9 cu. ft.)	65 lbs.
BC215**	78"x39"x13" (15 cu. ft.)	94 lbs.

**Must ship via truck



Polyethylene Mortar Boxes

Available in two popular sizes; 4 cubic feet and 9.4 cubic feet. Lightweight, but tough. Not affected by heat or cold; easy to clean. Leakproof construction will not rust.

No.	Size	Wt.	Thickness
BL375**	55"x33"x7" (4.5 cu. ft.)	16 lbs.	250 mil
BL376**	60"x36"x12" (9.4 cu. ft.)	22 lbs.	275 mil

**Must ship via truck



Polyethylene Mortar Pan

175 mil Thick

One-piece construction. Outwears metal. Not affected by plaster, mortar or water. Weighs less than 5 lbs. Easy to use, easy to clean. Tapers to 16"x16" at bottom.

No.	Size
BC492	29"x29"x6" (1.4 cu. ft.)



All Steel Mortar Pan

Rounded edges for easy handling. Curved corners and sloped sides makes this pan ideal for mixing materials. Smooth interior makes mixing easier. Leakproof. Easy to use, easy to clean. Holds 3 cu. ft.

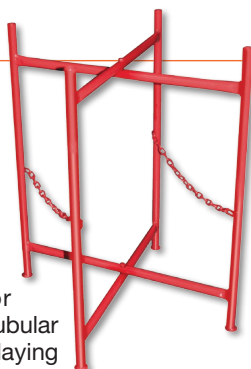
No.	Size	Gauge
BC212	30"x30"x7"	12
BC212E*	30"x30"x7"	20 NEW



Economy Mortar Stand

Use on scaffold or ground. Made from tubular steel, 30" tall or 19" laying on side. Weight 10 lbs.

No. BC293*



Professional Work Gloves

Lightweight yet durable professional work gloves. Comfortable neoprene cuff with Velcro® closure for a secure fit. Breathable spandex back provides ultimate comfort and fit.

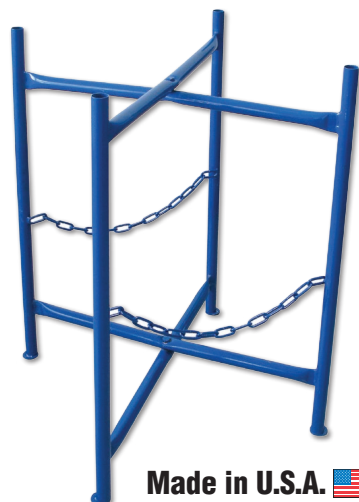
No.	Size
GG488-M*	Medium
GG488-L*	Large
GG488-XL*	X-Large



Mortar Stand

Folding stand is made of tubular steel and can be used on scaffold or ground. Lightweight and easy to handle. Stand is 29-1/2" tall and has (2) chains. Weight 12 lbs.

No. BC291



Made in U.S.A.

Heavy-Duty Mortar Hoe

Mortar hoe has two holes for better mixing. Comes with heavy-duty shovel-type wood handle. Preferred by the pros.

No.	Size
BC228	10"x6" Blade with 66" Handle
BC230	7"x5" Blade with 60" Handle



Short Handle Mortar Hoe

Mortar hoe has two holes for better mixing. Short 18" heavy-duty shovel-type wood handle, ideal for working in tight areas. A must-have tool for every mason. Overall length 21".

No.	Size
BC229	6-1/2"x4-3/4" Blade

MORTAR BOARDS & PANS



Polyethylene Mortar Board

Will not splinter. Will not absorb water. Dry mortar will not stick. Lightweight 150 mil polyethylene is easy to use and clean.

No.	Size
BC480	29"x29"

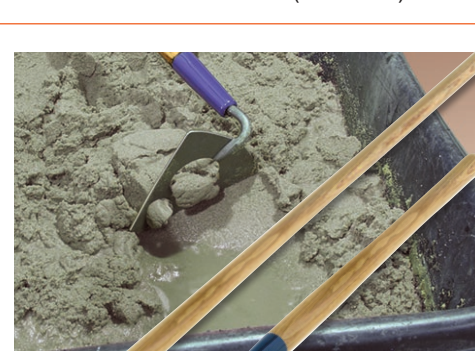
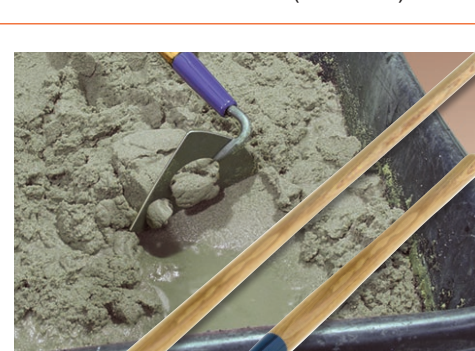


All Purpose Tub

100 mil Thick

Great for mixing a variety of materials. (6 per carton)

No.	Size
BC217	26"x20"x6" (1.3 cu. ft.)



US PATENT
6,412,569

Easy Mixer Concrete Hoe

Great tool for mixing concrete or mortar quickly in wheelbarrows, backhoe buckets, and other mixing containers. Patented forged head easily mixes 60 to 90 lb. bags of concrete in less than a minute. Special design creates minimum splash with 50% less drag. Great in corners. Open bag with point of hoe. 7-1/2"x6" blade.

No.	Handle Length
CC211	60"
CC212	21"

Concrete Chisels

Forged from the finest tool steel, well tempered, properly balanced for a comfortable hold.

No.	Size
CC654	10"x1-7/8"
CC671	10"x2-1/2"
CC655	10"x2-7/8"



PROFESSIONAL CHISELS

English Pattern Plugging Chisel

Plugging chisel has a grooved blade forged in England from the best steel available. Blade is 4-1/2" tall; tapers from 1" down to 1/2". Overall length 10".

No. BL377*



Plugging Chisel

Forged from the finest tool steel, well tempered, properly balanced for a comfortable hold. Overall length 10" with 6" handle.

No.	Size
BL576	4-1/2" Blade



Cold Chisels

Forged from the finest tool steel, well tempered, properly balanced for a comfortable hold.

No.	Size
GG362	3/4"x7-3/8"
GG363	3/4"x12"
GG364	1"x8-1/8"
GG365	1"x12"



Stone Splitting Wedge

Drill hole in stone and insert shims and wedge. Hammer the wedge to force stone apart.

Measures 4-3/4"x1/2".

No. BL389



Carbide-Tipped Hand Tracer

Hand tracer makes straight lines on stone. Continued tracing will cause stone to split along this line. 2" beveled blade, 1-1/2" diameter and 8-1/2" overall length.

No.	Weight
BL388	3 lbs.



Carbide Tipped Brick/Stone Hammer

Special designed head with wood handle gives extra striking force with 1" wide durable carbide tip.

No.	Weight
BL150	2 lbs.



Carbide Tipped Chipping Hammer

Forged and tempered. Vertical cutting edge has carbide tip for perfect angle to remove stone.

No.	Weight
BL149	2 lbs.



Rubber Grip English Bolster Chisel

Rubber grip English chisel is easier to hold while using. Forged and heat treated steel for longer life. Overall length of 8-3/4", 5" handle, 4" wide cutting blade.

No. BL426*



Bricklayer's Set

Forged from the finest tool steel, well tempered, properly balanced for a comfortable hold. Overall length 8".

No.	Size
BL232	2-1/2"
BL233	3"
BL234	4"



Plain Stone Mason's Chisels

Forged from the finest tool steel, powder coated. Well-tempered, properly balanced for a comfortable hold. Beveled end. Overall length 8".

No.	Size
BL022	1-1/4"x5/8"
BL423	1-3/4"x3/4"
BL424	2-1/4"x3/4"
BL425	2-3/4"x7/8"

Tooth Stone Mason's Chisels

Forged from the finest tool steel, well tempered, properly balanced for a comfortable hold. Overall length 8"

No.	Size
BL412	1-1/4"x5/8"
BL413	1-3/4"x3/4"
BL414	2-1/4"x3/4"
BL415	2-3/4"x7/8"

A) Hand Stone Chipper

Use to chip a straight edge on a smooth building stone.

No.	Diameter	Bit
BL385	7/8"	2"
BL386	1"	2-1/2"
BL387	1-1/8"	3"



B) Hand Stone Tracer

Marks a straight line on stone. Continued tracing will cause stone to split along this line. Great for shaping and cutting.

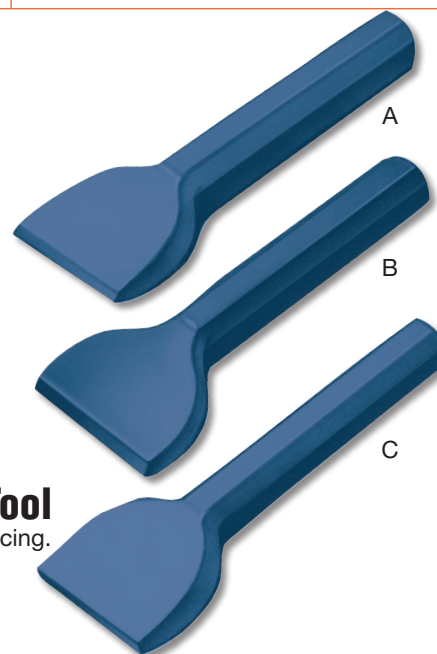
No.	Diameter	Bit
BL382	7/8"	2"
BL383	1"	2-1/2"
BL384	1-1/8"	3"



C) Hand Stone Pitching Tool

Use to trim stone on edge to put on a facing.

No.	Diameter	Bit
BL378	7/8"	2"
BL379	1"	2-1/2"
BL381	1-1/8"	3"



Kraft Brick Hammer

This heavy-duty brick hammer is available in three sizes. Forged from high quality tool steel. Comes with a smooth comfortable 11-1/4" wood handle.

No.	Description
BL155	24 oz.
BL153	28 oz.
BL152	32 oz.
BL152L	32 oz. with 15" Handle
BL155-01	11-1/4" Replacement Handle with Wedges



Bricklayer's Brick Hammer

This heavy-duty brick hammer is available in two sizes. Forged from high quality tool steel. Comes with a smooth comfortable 10-1/4" wood handle.

No.	Weight
BL255*	16 oz.
BL256*	24 oz.
BL255-01	Replacement Handle with Wedges



Dead Blow Hammer

2 pound hammer packs a wallop, yet dampens the vibration when striking the surface and minimizes the rebound. Compact head is flared for full coverage. The extruded handle is secured to tool. A rubber cover eliminates the possibility of sparking when striking metal, and minimizes surface marring.

No.	Weight
BL275*	2 lbs.



Toothed Bush Hammer

Has milled teeth on square face for shaping and texturing masonry materials. Square face.

No.	Size	Weight
BL344	1-1/2"	3 lbs.
BL444	1-3/4"	4 lbs.



Deluxe Toothed Bush Hammer

9" long head with 1" square face. Teeth are precision cut to a sharp point for superior cutting action and wear. Comes with smooth wood handle.

No.	Weight
BL151	2 lbs.
BL155-01	Replacement Handle with Wedges



Stone Mason's Hammer

A heavy-duty hammer made of forged and tempered steel. One end used for splitting and breaking stone, and the other end for trimming. Comes with 36" long handle.

No.	Weight
BL336	16 lbs.
BL338	20 lbs.



MASONRY HAMMERS

Mash Hammer

Forged steel head. Comes with 8-1/4" wood or fiberglass handle. Used by the professional bricklayer.

No.	Weight
BL453*	3 lbs. Wood Handle
BL453F*	3 lbs. Fiberglass Handle



Sledge Hammer With Fiberglass Handle

4 lb. sledge style head with strong fiberglass handle with rubber grips. Overall length 15-1/2". Ideal for working with forms, stakes and other general construction jobs.

No.	Weight
BL454F*	4 lbs.



One-Piece Estwing® Mash Hammer

Made of steel with nylon-vinyl cushion grip. Polished face and bevel, painted finish.

No.	Weight
BL352	2 lbs.
BL353	3 lbs.
BL354	4 lbs.



Scaling Brick Hammer

Scaling hammer is used for cleaning in preparation for refinishing old brick. Can also be used for chipping mortar in a variety of ways.

No.	Weight
GG334	16 oz.



Cushion Grip Estwing® Mason's Hammer

Built to really take punishment. Rugged steel handle will not break, fly off, dent or get chewed up. Exceptionally well balanced.

No.	Weight
BL320	20 oz.
BL324	24 oz.

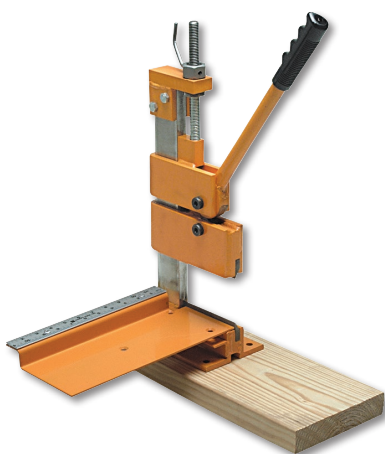


Short Handled Stone Mason's Hammer

Made of forged and tempered steel for trimming and splitting stone. Comes with 16" wood handle.

No.	Weight
BL333	3 lbs.
BL334	4 lbs.
BL337	6 lbs.
BL332	16" Replacement Handle with Wedges





Mini Brick Splitter

At only 29 lbs. this brick splitter easily travels from jobsite to jobsite. The 5" high opening fits a standard brick standing up at an angle. The lever action increases arm strength, making cuts with minimum effort. The blades are 4-1/2" wide, so it cuts most bricks now in use. A 12" rule and square is built right into the Mini Brick Splitter for accurate cuts.

No.	Description
BC582	Mini Brick Splitter
BC582-01	Set of Replacement Blades



Brick and Block Cart

Heavy-duty all terrain cart allows user to move straps of bricks. Comes with 7-1/2" prongs and a heavy-duty 3-piece hub with 2 ply tube-type tires. Rubber sealed heavy-duty ball bearings. All steel wheels with grease fittings. Constructed for a lifetime of service. 800 lb. capacity. Weight: 85 lbs.

No.	Size
BC205**	Cart: 29" Wide, 54" High
BC205-01	Short Replacement Prongs (Pair) 7-1/2" (Brick)
BC205-02	Long Replacement Prongs (Pair) 15" (Block)

**Must ship via truck



Masonry Guides

More information and instructions online at www.KraftTool.com.

The finest most versatile corner pole system available can be effectively used on all types of masonry brick veneer or solid load bearing wall and block work. The 9' pole and fittings are constructed entirely of high grade aluminum. The top and bottom fittings are completely adjustable and can be used at any height for quicker and more accurate set up. One person can quickly and easily erect and align. Sturdy, rugged, practically indestructible, these corner poles will pay for themselves time and time again.

Outside Corner System

No. BC607

Complete with 9' guide pole (no pole markings) and fittings shown below:



BC617
Outside Corner Base



BC614
Top Sliding Attachment

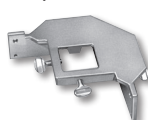


BC615
Outside Corner Top Fitting

Inside Corner System

No. BC608

Complete with 9' guide pole (no pole markings) and fittings shown below:



BC618
Inside/Intermediate Base



BC614
Top Sliding Attachment



BC616
Inside/Intermediate Top Fitting



BC619
Inside/Intermediate Line Holder

Guide Pole (Only)

No. BC609**

9' Pole (with no markings)

**Must ship via truck

Pole shown with outside fittings

Fittings may be ordered separately



Heavy-Duty Adjustable Tubular Brick Tongs

Designed and built for long wear. Will not damage brick. Heavy-duty tongs quickly adjust with a wing nut. Adjusts up from 17" to carry 6 to 10 bricks.

No. BC384



Adjustable Brick Tongs

Heavy-duty quick adjusting tong can carry 6 to 10 bricks. Will not damage bricks and is designed and built for long wear.

No.	Size
BC380	16"

PERSONALIZED Mason's Line Twigs / Trigs, Line Blocks, and Line Pins

Personalized Line Twigs/Trigs

- Text only, no logos
- Two line maximum imprint
- Imprint area 3/8" high and 2" wide
- Choice of black or red imprint color
- 4"x5/8" twig

Personalized Line Blocks

- Text only, no logos
- Three line maximum imprint
- Imprint area 1/2" high and 2-1/2" wide
- Choice of blue, black, or red imprint color
- 4"x1-1/4"x1-1/4" block

Personalized Line Pins

- Text only, no logos
- One line maximum imprint
- Imprint area is 18 spaces
- Stamped into metal surface
- 4-1/2" long pin



Online Order Form

Ask your helpful
Customer Service
Representative for
a special imprint
order form, prices,
and quantities. Order
forms also available
online.

**Imprint Your
Name Here!**



Wide Bit Brick Hammer

The head is forged from the highest quality tool steel available. A 1" square flat face provides a solid base when used with chisels. An extra wide 1-7/8" bit on this hammer makes it perfect for breaking up brick and stone. Sturdy fiberglass handle with comfortable non-slip grip. 13" overall.

No. BL321* **Weight** 20 oz.



Estwing® 16" All Steel Framing Hammer

Drive nails straight and fast with this powerful steel hammer. Nylon vinyl grip.

No.	Weight	Face
GG417	22 oz.	Milled
GGE316S	16 oz.	Smooth



Milled Face

Archaeology Tools

3 Handle Styles

Specialty trowel made from high grade steel. Thicker, beveled blade makes these trowels ideal for digging and scraping. Handles are placed at just the right angle to reduce wrist fatigue and provide knuckle clearance. Available in wood, leather, or ProForm® soft grip handles.



Pointing Trowels

Wood Handle

No.	Blade Size
AR421	4-1/2"x2-1/4"
AR424	5"x2-1/2"

Leather Handle

No.	Blade Size
AR421L	4-1/2"x2-1/4"
AR424L	5"x2-1/2"

ProForm® Handle

No.	Blade Size
AR421PF	4-1/2"x2-1/4"
AR424PF	5"x2-1/2"

Margin Trowels

Wood Handle

No.	Blade Size
AR431	5"x1-1/2"
AR432	5"x2"

Leather Handle

No.	Blade Size
AR431L	5"x1-1/2"
AR432L	5"x2"

ProForm® Handle

No.	Blade Size
AR431PF	5"x1-1/2"
AR432PF	5"x2"



Leather Pouch with rivets
and belt loop made to fit
Archaeology Trowels.
No. AR100

PLASTER HAWKS

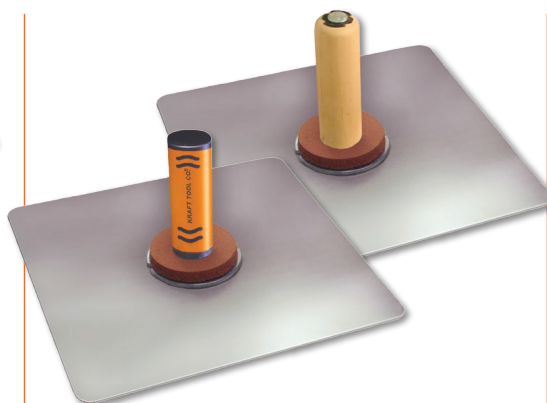


Contractor Aluminum Hawks

.060" Thick

High strength lightweight aluminum blade. Rounded corners protect against snags. The blade is machine scored to keep material centered on blade. The detachable wood handle includes a rubber hand protector that prevents callouses.

No.	Size
SL518	8"x8"
SL517	9"x9"
SL522	10"x10"
SL519	12"x12"
SL520	13"x13"
SL521	13-1/2"x13-1/2"

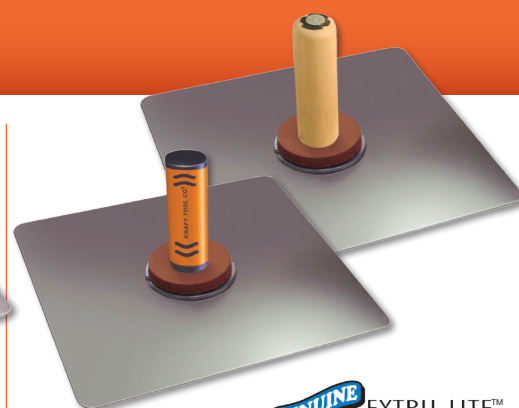


Aluminum Hawks

Heavy-Duty .080" Thickness

Heavy-duty aluminum hawk. Smooth straight edges with rounded corners. Blade is machine scored to control material. Detachable handle with threaded bolt and sponge rubber callous preventer.

Wood No.	ProForm® No.	Size
PL510	PL510PF	10"x10"
PL512	PL512PF	12"x12"
PL513	PL513PF	13"x13"
PL524	PL524PF	13-1/2"x13-1/2"
PL528	PL528PF	14"x14"
PL250	Wood Handle	
PL250PF	ProForm® Handle	
PL249	Callous Preventer	



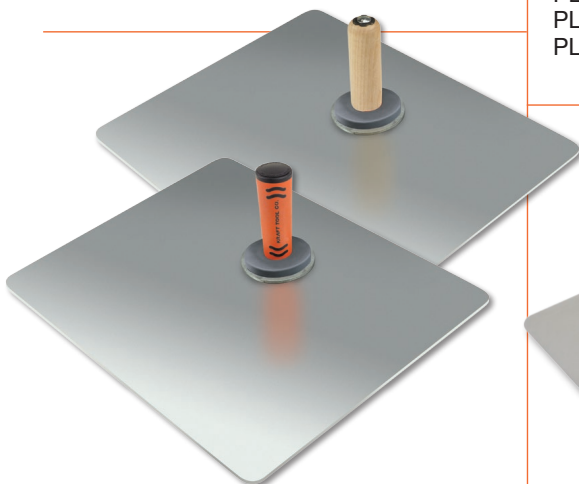
GENUINE EXTRU-LITE™
MAGNESIUM

Professional Magnesium Hawks

30% Lighter than aluminum

Corners are rounded for safety, comfort and long service. Blade is machine scored to control material. Has 4" flange reinforcing the center. Comes with a special 1/2" thick sponge rubber hand protector.

Wood No.	ProForm® No.	Size
PL260	PL260PF	8"x8"
PL261	PL261PF	10"x10"
PL262	PL262PF	12"x12"
PL263	PL263PF	13"x13"
PL265	PL265PF	13-1/2"x13-1/2"
PL264	PL264PF	14"x14"
PL266	PL266PF	16"x16"
PL250	Wood Handle	
PL250PF	ProForm® Handle	
PL249	Callous Preventer	



Large Offset Hawk

.060" Thick Aluminum

Brushed, unscored working surface keeps material stable. Offset blade allows for a larger working surface that balances on the user's arm. Smooth straight edges with rounded corners, which will not catch or tear surfaces. Detachable handle with threaded bolt and sponge rubber callous preventer.

Wood No.	ProForm® No.	Size
PL526	PL526PF	20"x16"



Venetian Trowel

Trapezoid shape stainless steel finish trowels. Designed for finishing and polishing decorative plaster and stucco. Machined edge with smooth bright finish.

Camel Back Wood Handle

No.	Size
PL627	8"x3" (203mmx76mm)
PL628	9-1/2"x3-1/2" (241mmx89mm)

ProForm® Handle

No.	Size
PL627PF	8"x3" (203mmx76mm)
PL628PF	9-1/2"x3-1/2" (241mmx89mm)

Elite Series™



Elite Series™ Venetian Trowel

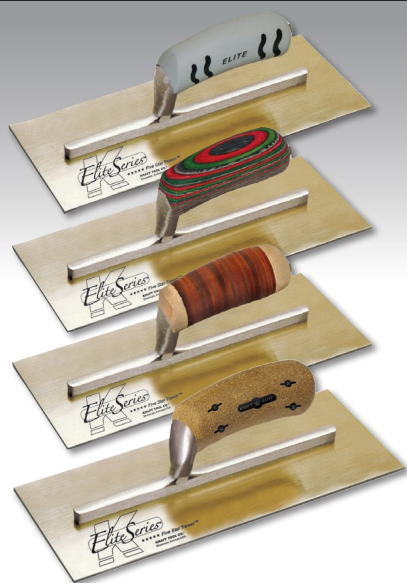
Trapezoid shape stainless steel finish trowels. Designed for finishing and polishing decorative plaster and stucco. Machined edge with smooth bright finish.

Cork Handle

No.	Size
PLE627K	8"x3" (203mmx76mm)
PLE628K	9-1/2"x3-1/2" (241mmx89mm)



Elite Series™ PLASTER FINISHING TROWELS



Golden Stainless Steel

Five Star Plaster Trowels

- Premium blade has a special heat treatment for a flatter, longer lasting blade

Size	ProForm® Handle No.	Wood Handle No.	Leather Handle No.	Cork Handle No.
11"x4-1/2"	PLE454PF	PLE454	PLE454L	PLE454K
11-1/2"x4-3/4"	PLE457PF	PLE457	PLE457L	PLE457K
12"x5"	PLE459PF	PLE459	PLE459L	PLE459K
13"x5"	PLE460PF	PLE460	PLE460L	PLE460K

Carbon Steel (not shown)

Five Star Plaster Trowels

Size	ProForm® Handle No.	Wood Handle No.	Leather Handle No.	Cork Handle No.
10-1/2"x4-1/2"	PLE425PF	PLE425	PLE425L	PLE425K
11"x4-1/2"	PLE451PF	PLE451	PLE451L	PLE451K
12"x5"	PLE468PF	PLE468	PLE468L	PLE468K
13"x5"	PLE470PF	PLE470	PLE470L	PLE470K

PLASTER FINISHING TROWELS



Carbon Steel

- Longer shank creates a stiffer blade
- Strong carbon steel blade

Camel Back Wood Handle

No.	Size	Shank
PL425	10-1/2"x4-1/2"	9-5/8"
PL451	11"x4-1/2"	9-5/8"
PL447	11"x4-3/4"	9-5/8"
PL456	11-1/2"x4-1/2"	9-5/8"
PL448	11-1/2"x4-3/4"	9-5/8"
PL468	12"x5"	9-5/8"
PL470	13"x5"	11-5/8"

ProForm® Soft Grip Handle

No.	Size	Shank
PL425PF	10-1/2"x4-1/2"	9-5/8"
PL451PF	11"x4-1/2"	9-5/8"
PL447PF	11"x4-3/4"	9-5/8"
PL456PF	11-1/2"x4-1/2"	9-5/8"
PL448PF	11-1/2"x4-3/4"	9-5/8"
PL468PF	12"x5"	9-5/8"
PL470PF	13"x5"	11-5/8"



Swedish Stainless Steel

- Heat treated Swedish stainless steel
- Special alloy will not rust, pit, or stain

Camel Back Wood Handle

No.	Size	Shank
PL525	10-1/2"x4-1/2"	9-5/8"
PL551	11"x4-1/2"	9-5/8"
PL547	11"x4-3/4"	9-5/8"
PL556	11-1/2"x4-1/2"	9-5/8"
PL548	11-1/2"x4-3/4"	9-5/8"
PL568	12"x5"	9-5/8"
PL570	13"x5"	11-5/8"
PL574	14"x5"	11-5/8"
PL576	16"x5"	13-5/8"

ProForm® Soft Grip Handle

No.	Size	Shank
PL525PF	10-1/2"x4-1/2"	9-5/8"
PL551PF	11"x4-1/2"	9-5/8"
PL547PF	11"x4-3/4"	9-5/8"
PL556PF	11-1/2"x4-1/2"	9-5/8"
PL548PF	11-1/2"x4-3/4"	9-5/8"
PL568PF	12"x5"	9-5/8"
PL570PF	13"x5"	11-5/8"
PL574PF	14"x5"	11-5/8"
PL576PF	16"x5"	13-5/8"



Golden Stainless Steel

- Special heat treatment for a flatter, longer-lasting blade
- Special alloy will not rust, pit, or stain

Camel Back Wood Handle

No.	Size	Shank
PL452	10-1/2"x4-1/2"	9-5/8"
PL454	11"x4-1/2"	9-5/8"
PL455	11"x4-3/4"	9-5/8"
PL453	11-1/2"x4-1/2"	9-5/8"
PL449	11-1/2"x4-3/4"	7-7/8"
PL457	11-1/2"x4-3/4"	9-5/8"
PL458	12"x5"	7-7/8"
PL459	12"x5"	9-5/8"
PL461	13"x5"	7-7/8"
PL460	13"x5"	11-5/8"
CF544	14"x5"	9-5/8"
PL462	16"x5"	9-5/8"

ProForm® Soft Grip Handle

No.	Size	Shank
PL452PF	10-1/2"x4-1/2"	9-5/8"
PL454PF	11"x4-1/2"	9-5/8"
PL455PF	11"x4-3/4"	9-5/8"
PL453PF	11-1/2"x4-1/2"	9-5/8"
PL449PF	11-1/2"x4-3/4"	7-7/8"
PL457PF	11-1/2"x4-3/4"	9-5/8"
PL458PF	12"x5"	7-7/8"
PL459PF	12"x5"	9-5/8"
PL461PF	13"x5"	7-7/8"
PL460PF	13"x5"	11-5/8"
CF544PF	14"x5"	9-5/8"
PL462PF	16"x5"	9-5/8"

Stucco Dash Brush

Bristles are attached to a 6" x 3-1/8" wood block. The 8" handle provides an easy grip for flinging plaster and other texture material. Great for touch ups on larger jobs. Available with plastic or bassine bristles when a stiffer fiber is needed. Also great for use as a clean-up brush.

No.	Bristles	Material
PL114	4"	Palmyra Bristles
PL115	5-1/4"	Yellow Plastic Bristles



Regular Dutch Brush

Used by plasterers, painters, stucco workers and cement finishers. Made of Tynex® nylon set in rubber.

No.	Size	Bristle Length
PL101	7"x1-1/2"	4-1/8"



Jumbo Dutch Brush

Plaster, paint and wall brush. 2-1/4" wide for maximum material holding and coverage. Soft nylon bristles with stainless steel binding.

No.	Size	Bristle Length
PL103	7"x2-1/4"	4-1/8"



China Bristle Brush

Universal wall, paint and plaster finish brush. Pure China bristles set in epoxy makes this brush ideal for plastering, painting, stucco and texturing projects. Smooth wood handle with rubber grip for comfort. Hanging device allows brush to rest on bucket edge away from material.

No.	Block Size	Bristle Length
PL131*	5-7/8"x2-1/4" (149mmx57mm)	3-1/4"



Plaster Shaver/Scraper

The 7" two-sided replaceable blade allows for both chiseling and scratching. The square notched side is beveled to pull away thin slices of plaster and gypsum. The beveled straight blade can chisel and smooth plaster. ProForm® soft grip handle completes the tool.

No.	Description
PL126	Plaster Shaver/Scraper
PL126-01	7" Replacement Blade



Go Devil

Applies stucco and other materials quickly. Available in magnesium or lightweight aluminum.

No.	Size	Material
PL267	22"x8"	Magnesium
PL268	22"x10"	Magnesium
PL529	22"x8"	Aluminum
PL530	22"x10"	Aluminum



Scratcher Knife

Blue steel blade on aluminum mounting. The v-notch on 2 sides of the blade allows for brush type strokes for scratching plaster and stucco for bonding. Strong, wide lightweight plastic handle.

No.	Description
PL629	12"x5" Blade
	Notch Size 1/2"x1/2"



Scratcher Trowel

Great for scratching plaster or stucco. Features a 1/2" x 1/2" "V" notch.

Wood	ProForm®	Size
No.	No.	
PL631	PL631PF NEW	12"x5"
PL630	PL630PF NEW	16"x5"



Angle Plane

Use this handy tool instead of your trowel blade to work down high spots, scrape walls and clean angles. It has 7 blue steel blades, 1" deep.

No.	Size
PL300	10"x4"



Blister Brush

The perfect tool to easily apply water or pick water up off newly finished surfaces. Also handy for cement finishing. Has removable hardwood handle with steel ferrule. Insert felt pads into the 1-1/4"x7-1/2" aluminum channel with sturdy 1/8" sidewalls. Comes with two 4"x9" felt pads.

No.	Description
PL224	Blister Brush
PL225	Replacement Felt Pads



ProForm®
Scarifier Handle
US Patent
#D614,471S



Plasterer's Scarifier

Used to easily scratch undercoats so finish coat will bond and not separate. Has light, flexible steel tines, all welded construction. Available with a steel handle or comfortable ProForm® handle. End of ProForm® handle accepts broom thread handles for extended reach (sold separately, see page 86).

ProForm® Handle	Steel Handle	Size
No.	No.	
PL206PF	PL206	6"
PL208PF	PL208	8"
PL212PF	PL212	12"
PL214PF	PL214	14"
PL216PF	PL216	16"