

# **BALDOR® • RELIANCE**

## **Product Information Packet**

# **105W**

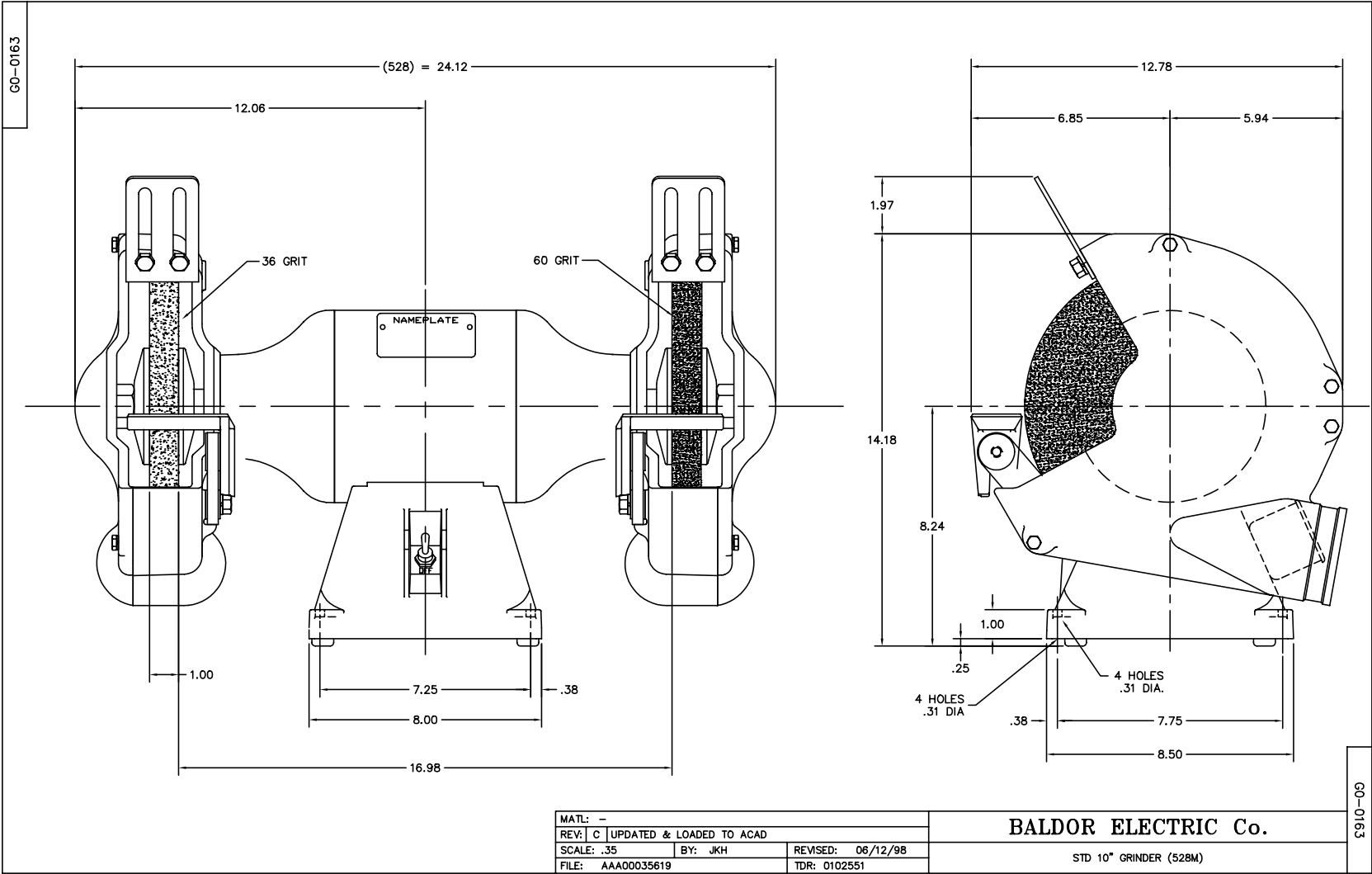
**1.5HP, 1500/1800RPM, 3PH, 50/60HZ, 3528M**

Part Detail							
Revision:	AM	Status:	PRD/A	Change #:		Proprietary:	No
Type:	AC	Elec. Spec:	G0WG0036	CD Diagram:	CD0006	Mfg Plant:	
Mech. Spec:	G10-163	Layout:	G0LY0163	Poles:	04	Created Date:	
Base:	RG	Eff. Date:	12-01-2016	Leads:	3#18 SEE NOTES	Y	

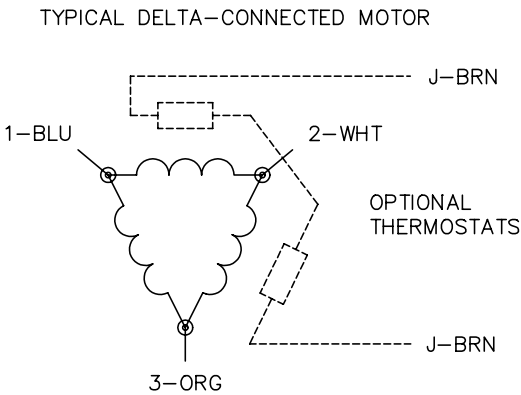
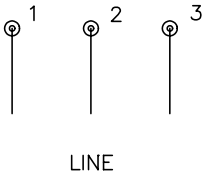
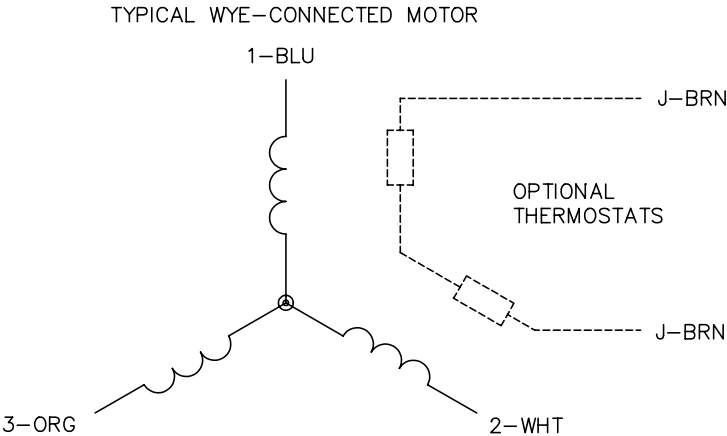
Specs			
Nameplate Output:	1.5		
Product Style:	GRINDER		

Nameplate NP0113			
CAT.NO.	105W		
HP	1.5	VOLTS	575
PHASE	3	AMPS	1.1
HZ	50//60	RPM	1500//1800
SER.NO			
SPEC.	G10-163-36		

No performance data has been  
assigned to this product.



CD0006



- NOTES:
1. THREE LEAD MOTOR MAY BE EITHER WYE CONNECTED OR DELTA CONNECTED.
  2. INTERCHANGE ANY TWO LINE LEADS TO REVERSE ROTATION.
  3. OPTIONAL THERMOSTATS ARE PROVIDED WHEN SPECIFIED.
  4. ACTUAL NUMBER OF INTERNAL PARALLEL CIRCUITS MAY VARY.
  5. LEAD COLORS ARE OPTIONAL. LEADS MUST BE NUMBERED AS SHOWN.

REV. DESC: REVISE TO SHOW OPTIONAL COLORS			
REV. LTR: D	BY: JLP	REVISED: 01/21/99 4:02	TDR: 0171435
9000D		FILE: AAA00005141	MDL: -
		MTL: -	

BALDOR ELECTRIC Co.

3PH, SV, 3 LEADS, WYE OR DELTA CONNECTED

CD0006