

# EGi enerco group inc.

**HEATSTAR** 

 **ENERCO**

 **Mr. Heater**



**HVAC & LP GAS DISTRIBUTION CATALOG**

**ENERCO GROUP INC. CLEVELAND OHIO**



**Enerco Group, Inc., based in Cleveland Ohio, has been at the forefront of infrared and combustion technology since 1957. Market leading engineering and experience has enabled Enerco to build expertise in the consumer heating, heavy duty industrial, construction, custom process heating and now, agricultural and greenhouse heating markets. Over six decades, Enerco has developed brands and product lines tailored to the needs of these market segments.**

**Since 1984, Enerco has established several brands generating rapid growth via retail distribution. The Mr. Heater Brand is America's most popular heater brand in the consumer market. It includes an array of products geared to the specialized needs of the outdoor enthusiasts.**

**Heatstar by Enerco and Enerco are leading brands in the construction, equipment rental and industrial arenas. These heaters are engineered with rugged designs geared to meet the durability and toughness demands of construction and industrial work sites. The Heatstar Brand is sold exclusively through professional tool, industrial, rental, HVAC and LP gas distributors. Enerco Brand applies to a complete line of hoses, fittings and accessories marketed through industrial, professional HVAC, LP Gas and Recreational Vehicle distributors.**

**In 2013, Stanley Black and Decker selected Enerco Group, Inc. to be the North American licensee to make and market DeWALT® Portable Heaters. In 2015, the Heatstar AG Brand was launched with a group of products custom built for agriculture and greenhouse applications.**

**Through product innovation, world class quality, outstanding marketing, and world class customer service, Enerco has earned North American market leading positions in each of the markets we serve.**



# Table of Contents



## IMAGE LIBRARY

High res and low res product images are available for download from our online image gallery. Call 866.447.2194 for login information.

Description	Page
Vent Free Heaters	4-5
Radiant Tube Heaters	6-7
High Intensity Infrared Heaters	8-9
Portable Propane Heaters	10
Portable Propane Buddy Heaters	11
Gas Unit Heaters	12
Nomad Dual Fuel Box Heaters	12
Direct Fired Greenhouse Heaters	13
Heatstar Construction Heaters	14
Dewalt Job-Site Heaters	15
Handheld Propane Torches	16
Portable Electric Washing Machine	16
Angle Iron Propane Stoves	17
Portable Propane Shower Systems	17
Propane Hoses, Fittings & Regulators	18-23

NEW PRODUCTS	Page
HSGSP Low clearance tube heaters	6
Decorative high intensity overhead heaters	8-9
High Intensity Infrared Heaters	8-9
Black high intensity garage heaters	9
125,000 BTU Unit Heater (HSU125NG)	12
DeWALT cordless forced air propane heater	15
UL® listed rubber propane hose assemblies	18-19
UL® listed thermoplastic propane hose assemblies	20-21
LP Gas fittings/couplings for thermoplastic hose assemblies	22-23

# VENT FREE INFRARED HEATERS

Model #	Description
F155226	HSVFR10NG - (Natural Gas) - 10,000 BTU/Hr.
F155229	HSVFR10LP (Propane) - 10,000BTU/Hr.
F156001	HSSVFRD10LPT - (Propane) - 10,000 BTU/Hr.
F156041	HSSVFRD20NGBT- (Natural Gas) - 20,000 BTU/Hr.
F156051	HSSVFRD20LPBT - (Propane) - 20,000 BTU/Hr.
F156081	HSSVFRD30NGBT - (Natural Gas) - 30,000 BTU/Hr.
F156091	HSSVFRD30LPBT - (Propane) - 30,000 BTU/Hr.

## UNIQUE FEATURES:

- Blower fan included (20 & 30,000 models only) - *Circulates heat*
- Wall mount bracket & feet included - *Easy to install*
- No venting or chimney required
- 4500 ft high altitude restriction (*see manual for use above 4,500 feet*)
- CSA certified - *Not Approved for use in California or Canada.*
- Electronic "push-button" ignition - *(AA batteries included)*
- Thermostat included - *As noted in chart below*
- Safe - *Built-in low oxygen shut-off sensor*
- Economical - *99.9% Efficient*
- 5-Year limited warranty



Stock #/ Model #	F155226 HSVFR10NG	F155229 HSVFR10LP	F156001 HSSVFRD10LPT	F156051 HSSVFRD20LPBT	F156041 HSSVFRD20NGBT	F156091 HSSVFRD30LPBT	F156081 HSSVFRD30NGBT
BTU Rating	10,000	10,000	10,000	20,000	20,000	30,000	30,000
Burn Rate	0.001 MCF	0.463 lbs/hr	0.463 lbs/hr	0.926 lbs/hr	0.020 MCF	1.389 lbs/hr	0.030 MCF
Variable Output	YES	YES	NO	NO	NO	NO	NO
Heats Up To: (Approx. Sq. Ft.)	250	250	250	500	500	750	750
Fuel	Natural Gas	Propane	Propane	Propane	Natural Gas	Propane	Natural Gas
Minimum Recommended Tank Size	NA	20 lb.	20 lb.	20 lb.	NA	20 lb.	NA
Certified	YES	YES	YES	YES	YES	YES	YES
Low Oxygen Shut-Off Switch	YES	YES	YES	YES	YES	YES	YES
Legs & Hardware Included	YES	YES	YES	YES	YES	YES	YES
Ignition	Piezo	Piezo	Electronic	Electronic	Electronic	Electronic	Electronic
Integrated Blower Fan	NO	NO	NO	YES	YES	YES	YES
Thermostat	NO	NO	YES	YES	YES	YES	YES

This heater obtained the indicated BTU ratings when tested per ANSI Z21.11.2-2002, addenda Z21.11.2a-2003 "Gas Fired Room Heaters", Volume II, "Unvented Room Heaters."

Always check local codes for permitted uses.

# VENT FREE BLUE FLAME HEATERS

Model #	Description
F155550	HSVFB10NG - (Natural Gas) - 10,000 BTU/Hr.
F155583	HSVFB10LP (Propane) - 10,000 BTU/Hr.
F156011	HSSVFBF10LPT - (Propane) - 10,000 BTU/Hr.
F156021	HSSVFBF20NGBT- (Natural Gas) - 20,000 BTU/Hr.
F156031	HSSVFBF20LPBT - (Propane) - 20,000 BTU/Hr.
F156061	HSSVFBF30NGBT - (Natural Gas) - 30,000 BTU/Hr.
F156071	HSSVFBF30LPBT - (Propane) - 30,000 BTU/Hr.

## UNIQUE FEATURES:

- Blower fan included (20 & 30,000 models only) - *Circulates heat*
- Wall mount bracket & feet included - *Easy to install*
- No venting or chimney required
- 4500 ft high altitude restriction (*see manual for use above 4,500 feet*)
- CSA certified - *Not Approved for use in California or Canada.*
- Electronic “push-button” ignition - *(AA batteries included)*
- Thermostat included - *As noted in chart below*
- Safe - *Built-in low oxygen shut-off sensor*
- Economical - *99.9% Efficient*
- 5-Year limited warranty



Stock # / Model #	F155550 HSVFB10NG	F155583 HSVFB10LP	F156011 HSSVFBF10LPT	F156031 HSSVFBF20LPBT	F156021 HSSVFBF20NGBT	F156071 HSSVFBF30LPBT	F156061 HSSVFBF30NGBT
BTU Rating	10,000	10,000	10,000	20,000	20,000	30,000	30,000
Burn Rate	0.001 MCF	0.463 lbs/hr	0.463 lbs/hr	0.926 lbs/hr	0.020 MCF	1.389 lbs/hr	0.030 MCF
Variable Output	YES	YES	NO	NO	NO	NO	NO
Heats Up To: (Approx. Sq. Ft.)	250	250	250	500	500	750	750
Fuel	Natural Gas	Propane	Propane	Propane	Natural Gas	Propane	Natural Gas
Minimum Recommended Tank Size	NA	20 lb.	20 lb.	20 lb.	NA	20 lb.	NA
Certified	YES	YES	YES	YES	YES	YES	YES
Low Oxygen Shut-Off Switch	YES	YES	YES	YES	YES	YES	YES
Legs Included	YES	YES	YES	YES	YES	YES	YES
Wall Mount Hardware Included	YES	YES	YES	YES	YES	YES	YES
Ignition	Piezo	Piezo	Electronic	Electronic	Electronic	Electronic	Electronic
Integrated Blower Fan	NO	NO	NO	YES	YES	YES	YES
Thermostat	NO	NO	YES	YES	YES	YES	YES

This heater obtained the indicated BTU ratings when tested per ANSI Z21.11.2-2002, addenda Z21.11.2a-2003 “Gas Fired Room Heaters”, Volume II, “Unvented Room Heaters.” Always check local codes for permitted uses.



## HSGSP TUBE HEATERS

- Compact 3" Aluminized Steel U-Tube Design
- Provides Uniform Heat Distribution
- Polished Aluminum Deep-Dish Reflector
- 120VAC, single phase, 1 amp
- Low clearance requirements
- Burner and tube set in one box

Stock #	Model #	BTU/HR	Gas
F102857	HS45GSP-NG	45,000	NG
F102855	HS45GSP-LP	45,000	LP

VENTING SPECIFICATIONS			
Length Min.	Length Max.	Flue/Pipe	Vent Pipe
5'	25'	3" diameter	3" diameter

ACCESSORY, GRID KIT	
Stock #	Description
F102859	Decorative Grid Kit



**Decorative  
Grid  
Optional**

MOUNTING CLEARANCE TO COMBUSTIBLES						
Mount	Top	Bottom	Reflector Side	Tube Side	Reflector End	Burner End
Horizontal	5"	54"	24"	24"	6"	24"
45°	5"	36"	4"	38"	6"	24"

## ERXL & ER2STG TUBE HEATERS

- 10-Year warranty\*
- Available in 10 to 60 foot system lengths
- Aluminized 16 gauge steel tubing
- Outside or inside air for combustion
- Sealed burner control box
- Full cover polished aluminum reflector
- Reflectors install horizontally or 45°
- Stainless steel couplers
- Chrome plated hanging brackets
- Underside burner sight glass
- All components are name-brand non-proprietary
- 24 Volt or line voltage thermostat install option

• **NG burners include LP conversion kit**

\* Warranty limited to 2 years in ammonia, chlorine, chemical exposure and car wash installations. See 2016 owners manual for complete details.



# RADIANT TUBE HEATERS

## ERXL SINGLE STAGE HEATER BURNER BOXES

Stock #	Model #	BTU/HR	Gas
F102594XL	ERXL40-N	40,000	NG
F102595XL	ERXL40-LP	40,000	LP
F102650XL	ERXL60-N	60,000	NG
F102651XL	ERXL60-LP	60,000	LP
F102652XL	ERXL80-N	80,000	NG
F102653XL	ERXL80-LP	80,000	LP
F102654XL	ERXL100-N	100,000	NG
F102655XL	ERXL100-LP	100,000	LP

Stock #	Model #	BTU/HR	Gas
F102656XL	ERXL125-N	125,000	NG
F102657XL	ERXL125-LP	125,000	LP
F102658XL	ERXL150-N	150,000	NG
F102659XL	ERXL150-LP	150,000	LP
F102660XL	ERXL175-N	175,000	NG
F102661XL	ERXL175-LP	175,000	LP

## ER2STG 2 STAGE TUBE HEATER BURNER BOXES

Stock #	Model #	BTU/HR	Gas
F102600	ER 2STG100-N	60,000 LOW - 100,000 HIGH	NG
F102602	ER 2STG100-LP	60,000 LOW - 100,000 HIGH	LP
F102605	ER 2STG125-N	80,000 LOW - 125,000 HIGH	NG
F102607	ER 2STG125-LP	80,000 LOW - 125,000 HIGH	LP
F102610	ER 2STG175-N	125,000 LOW - 175,000 HIGH	NG
F102612	ER 2STG175-LP	125,000 LOW - 175,000 HIGH	LP

*All NG burners include  
LP conversion kit*

## TUBE SETS MIX & MATCH WITH ERXL & ER2STG BURNER BOXES

### Mounting Clearance to Combustibles

Stock #	Use with Burner Box Models	Length	Top-Horizontal	Top-45° Angle	Straight Below	Sides	Typical Mounting Height	Shipping Weight (lbs.)
F106408XL	ERXL40 (10' Turbulator)	10'	6"	12"	55"	30"	10-14'	90
F106404XL	ERXL60/80 (10' Turbulator)	20'	6"	18"	55"	36"	12-15'	110
F106405XL	ERXL80 (10' Turbulator)	30'	6"	18"	55"	36"	12-15'	110
F106401XL	ERXL100 (5' Turbulator) or ER2STG100 N/LP	30'	6"	18"	74"	36"	12-15'	130
F106406XL	ERXL100/125 or ER2STG125 N/LP	40'	6"	18"	87"	36"	14-19'	150
F106407XL	ERXL125/150/175 or ER2STG125 N/LP	50'	6"	18"	87"	36"	15-25'	170
F106403XL	ERXL150/175 or ER2STG175 N/LP	60'	6"	18"	87"	36"	15-25'	190

Tube sets include: Tubes, reflectors, hangers, couplers, & vent adapter, plus turbulator where necessary

## ACCESSORIES KITS

Stock #	Description
F102603	*Installation kit for 30' unit (ER 2STG Tube Set)
F102604	*Installation kit for 40' unit (ER 2STG Tube Set)
F102606	*Installation kit for 50' unit (ER 2STG Tube Set)
F102608	*Installation kit for 60' unit (ER 2STG Tube Set)
F102834	*Installation kit for HST units (includes thermostat, shut-off valve, flex connector & chain kit)

Stock #	Description
F111751	*Installation kit for 20' unit (ERXL-60, 80S)
F111752	*Installation kit for 30' unit (ERXL-80, 100S)
F111753	*Installation kit for 40' unit (ERXL 100, 125S)
F111754	*Installation kit for 50' unit (ERXL 125, 150, 175)
F111755	*Installation kit for 60' unit (ERXL 150L, 175L)

\*Installation kits include vent cap, thermostat, shut-off valve, SS flex connector & chain kits.

Stock #	Description
F106414	180° U-Tube Kit
F106415	90° Elbow Kit
14585P	Hanger Kit (1 per 10')
17370	Chain Kit (1 per 10')

Stock #	Description
00438	Side Reflector Kit
F102601	ER2STG Thermostat
10371	24V Thermostat
10392	120V Thermostat

# HIGH INTENSITY INFRARED HEATERS

## RESTAURANT/PATIO HIGH INTENSITY INFRARED HEATERS

- 30,000 BTU Burner
- Decorative grate protects burners from damage & acts as a wind guard
- Black, satin gloss painted body and reflectors\*\*
- 120V 24V / 40VA Transformer included loose in box
- Mounts horizontal or at 45° angle - mounting brackets included (black)
- Spark ignition
- Operates with 24V or 120V thermostats
- No direct venting required
- Warranty: pro-rated 3 year (burner assembly), limited 1 year (gas control)
- Made from corrosion resistant materials – durable, rugged construction



*(Convert 30,000 Btu/hr to 40,000Btu/hr using optional orifice #05443)*

Stock #	Model #	BTU/HR	Gas
F140625	HSRR30SPNG	30,000	NATURAL
F140627	HSRR30SPLP	30,000	PROPANE

CONVERSION KIT	
Stock #	Description
05443	Converts all 30,000 Btu/hr to 40,000 Btu/hr

## STANDARD SERIES HIGH INTENSITY INFRARED HEATERS

- Durable - rugged construction
- Instant heat - quiet, clean, odor-free operation
- Maintenance free - no moving parts to service
- CSA certified
- Limited 1-year warranty on gas control
- Limited 10-year warranty on burner assembly
- No direct venting required
- Multiple BTU outputs (conversion orifices included)
- Spark ignition heaters ship with 40VA transformer
- Millivolt control heaters shipped with thermostat
- Non corrosive materials used throughout construction



## DECORATIVE KITS

Stock #	Description
F104440	4000 Series Decorative Grid Kit
F104441	4000 Series Decorative Grid kit, retro-fit
F104445	8000 Series Decorative Grid Kit
F104446	8000 Series Decorative Grid kit, retro-fit
F104435	GRID KIT, HS25N/HS22L
F104436	RETRO FIT GRID KIT, HS25N/HS22L-REFLECTOR

### Optional Accessories:

**F114581** Hanging bracket, **17374** - Chain hanging kit, **10371** - 24V thermostat



# HIGH INTENSITY INFRARED HEATERS

## 4000 SERIES HIGH INTENSITY INFRARED HEATERS

Stock #	Model #	BTU/HR	Gas
F140629	HS4040SPNG	40,000 BTU	NG
F140626	HS4040PPNG	40,000 BTU	NG
F140731	HS4040SPLP	40,000 BTU	LP
F140727	HS4040PPLP	40,000 BTU	LP

**NOTE: ALL 4040 HEATERS COME WITH AN EXTRA ORIFICE TO CONVERT TO 30,000 BTU'S.**

## 8000 SERIES HIGH INTENSITY INFRARED HEATERS

Stock #	Model #	BTU/HR	Gas
F180629	HS8060SPNG	60,000 BTU	NG
F180626	HS8060PPNG	60,000 BTU	NG
F180731	HS8060SPLP	60,000 BTU	LP
F180727	HS8060PPLP	60,000 BTU	LP

**NOTE: ALL 8060 NG HEATERS COME WITH EXTRA ORIFICES TO CONVERT TO 50,000 or 70,000 BTU'S. (70,000 BTU only available in NG)**  
**"NOTE: ALL 8060 LP GAS HEATERS COME WITH AN EXTRA ORIFICE TO CONVERT TO 50,000 BTU'S."**

## 9000 SERIES HIGH INTENSITY INFRARED HEATERS

Stock #	Model #	BTU/HR	Gas
F191830	HS9100SSPNG	100,000 BTU	NG
F191826	HS9100SPPNG	100,000 BTU	NG
F191931	HS9100SSPLP	100,000 BTU	LP
F191927	HS9100SPPLP	100,000 BTU	LP

**NOTE: ALL 9000S HEATERS COME WITH EXTRA ORIFICES TO CONVERT TO 80 OR 90,000 BTU'S.**

Stock #	Model #	BTU/HR	Gas
F190630	HS9120SPNG	120,000 BTU	NG
F190626	HS9120PPNG	120,000 BTU	NG
F190731	HS9120SPLP	120,000 BTU	LP
F190727	HS9120PPLP	120,000 BTU	LP

**NOTE: ALL 9120NG HEATERS COME W/EXTRA ORIFICES TO CONVERT TO 100,000 OR 140,000 BTU'S. (140,000 BTU only available in NG)**  
**ALL 9120LP HEATERS COME W/EXTRA ORIFICE TO CONVERT TO 100,000 BTU'S.**

## CONTROL SYSTEMS AVAILABLE

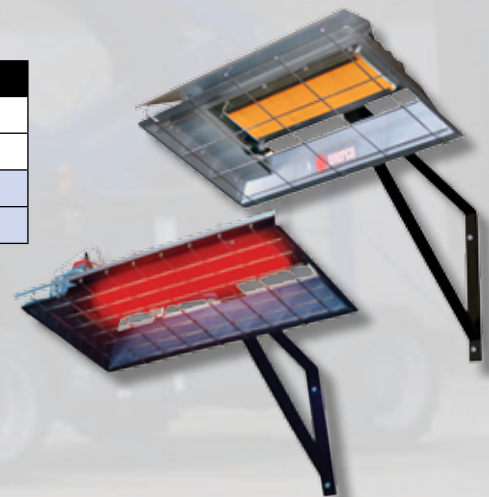
Optional controls available, contact factory for details.

Suffix	Description	Gas
SP	Automatic Spark Ignition on pilot with safety burner shutoff, 24VAC control with intermittent pilot. (Pilot is off when heater is off) Transformer 120V/24V shipped loose with heater	Natural / Propane
PP	Power pile (self-generating) millivolt control. No outside electrical source is required to turn heater on and off. Manually lit pilot. Safety shutoff on pilot and burner. Thermostat shipped loose with heater.	Natural/Propane

## GARAGE/WORKSHOP HEATERS

Stock #	Model #	BTU/HR	Gas
F125444 (Aluminum Housing)	H25N	25,000 BTU	NG
F125545 (Aluminum Housing)	H22L	22,000 BTU	LP
F172105 (Black Housing)	H22L-BLK	22,000 BTU	LP
F172106 (Black Housing)	H25N-BLK	25,000 BTU	NG

- Economical - no electricity required
- Convenient - easy to operate and install
- Maintenance free - no moving parts to service
- Limited 1-Year warranty on gas control
- Limited 5-Year warranty on burner
- Quiet, clean, odor-free operation
- Includes thermostat
- CSA certified





# PORTABLE PROPANE TANK TOP HEATERS

Model #	Description
F242540	MH540 Heater - 48,000 BTU/Hr.

- Operates on 360° angle or tilted to 180°
- 3 heat settings: 29,000, 36,000, 48,000 BTU's
- No electricity needed
- Instant, efficient outdoor heat
- Quiet, easy to use
- No assembly required
- Tip-over safety shut-off
- Outdoor use only
- CSA certified

Model #	Description
F242100	MH15T Heater - 10,000-15,000 BTU/Hr.
F242650	MH30T Heater - 10,000-30,000 BTU/Hr.
F242915	MH45T Heater - 10,000-45,000 BTU/Hr.

- Tip-over safety shut-offs
- Soft nose P.O.L.
- Premium grade stainless steel burning surface
- Direct connection to 20lb. bulk propane tank
- Can operate burners individually
- Directional, adjustable heads
- Polished chrome reflector
- Outdoor use only
- CSA certified

Model #	Description
F242010	MH4GC Golf Cart Heater (Propane) - 4,000 BTU/Hr.

- 4,000 BTU, operates up to 5.5 hours on 1 lb. cylinder (not included)
- Wind resistant protective screen
- High-intensity radiant heat
- Safety systems- oxygen depletion system and tip-over safety switch
- Outdoor use only
- CSA Certified



## PORTABLE BUDDY® PROPANE HEATERS

Model #	Description
F215100	MH4B "Little Buddy®" Heater (Indoor Safe) - 3,800 BTU/Hr.
F215120	MH4B "Little Buddy®" (Massachusetts/Canada Only)

- One button ignition/on function
- Tip-over safety shut-off
- 8" round stand uses little floor space
- Low oxygen safety shut-off system
- Heats up to 95 sq. ft.
- Connects directly to one 1lb. cylinder
- Runs approx. 5.6 hours on 1 lb. cylinder
- CSA certified





# PORTABLE PROPANE - BUDDY® HEATERS

Model #	Description
F232000	MH9BX Portable "Buddy®" Heater (Indoor Safe) - 4,000 and 9,000 BTU/Hr.
F232050	MH9BX Portable "Buddy®" Heater (Massachusetts/Canada Only)

- Swivel regulator and single control
- Fold down handle • Hi-Low heat settings
- Low oxygen safety shut-off system (ODS)
- Tip-over safety shut-off
- Heats up to 225 sq. ft.
- Runs off a 1 lb. cylinder, connects to a 20lb. tank with optional hose and filter
- Runs 5 hours on 1 lb. cylinder
- CSA Certified

#### Optional Accessories:

- F273704** 10' Buddy hose (No filter required)
- F173701** 5' hose assembly (Filter required)
- F173702** 12' hose assembly (Filter required)
- F273699** Fuel filter
- F232078** 9BX Portable Buddy Carry Bag



Model #	Description
F232035	MH12HB Hunting Buddy® (Indoor Safe)- 6,000 and 12,000 BTU/Hr.
F232045	MH12HB Hunting Buddy® - (Massachusetts/Canada)

- Quiet electronic ignition
- Swivel regulator and single control
- Fold down handle • Hi-Low heat settings
- Heavy Duty burner guard
- Low oxygen safety shut-off system (ODS)
- Tip-over safety shut-off
- Runs off a 1 lb. cylinder, connects to a 20lb. tank with optional hose and filter
- Storage space for spare 1 lb. cylinder
- Runs 3.5 hrs on 1 lb. cylinder
- Heats up to 300 sq. ft.
- CSA certified

#### Optional Accessories:

- F273704** 10' Buddy hose (No filter required)
- F173701** 5' hose assembly (Filter required)
- F173702** 12' hose assembly (Filter required)
- F273699** Fuel filter



Model #	Description
F274800	MH18B "Big Buddy®" Heater (Indoor Safe) - 4,000, 9,000 and 18,000 BTU/Hr.
F274865	MH18B "Big Buddy®" Heater (Massachusetts/Canada Only)

- Swivel regulator and single control • Hi-Med-Low heat settings
- Low oxygen safety shut-off system (ODS)
- Tip-over safety shut-off
- Heats up to 450 sq. ft.
- Fan\* (operates on 4 D batteries or A/C adapter both sold separately)
- Connects to two 1lb. cylinders or to one or two 20lb. tank with optional hose
- Runs 11 hours on two 1 lb. cylinders on low setting
- CSA certified

\* Fan not required for use

#### Optional Accessories:

- F273704** 10' Buddy hose (No filter required)
- F173701** 5' hose assembly (Filter required)
- F173702** 12' hose assembly (Filter required)
- F273699** Fuel filter
- F271802** Quick disconnect hose for regulated tanks
- F271803** Tank to quick disconnect hose (No filter required)
- F276167** AC adapter

All Buddy heaters have a 7000 ft High Altitude Restriction





## GAS UNIT HEATERS

- Requires only 1" clearance from ceiling
- Indoor safe
- Ships as NG, includes NG to LP conversion kit\*
- Spark ignition features self-diagnostic control module
- Includes angle brackets (2) for ceiling mount
- 3" flue size for vertical vent - 4" for horizontal
- Category 1 vertical; Category 3 horizontal venting
- CSA certified



**All units are natural gas heaters with propane conversion kit included\***

Stock #	Model #	BTU/HR
F160550	HSU50	50,000
F160560	HSU80	80,000
F160490	HSU125	125,000

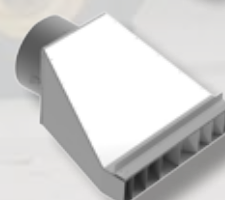
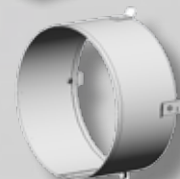
\*Conversion should be done by a certified installer. Detailed instructions are included.

## NOMAD™ DUAL FUEL BOX HEATERS

- Multi-rate heat settings - High/Low
- Dual fuel (NG/LP)
- Higher CFM
- Easy reset high limit switch
- Choose rate and fuel with flip of a switch
- Flexible diffuser connector system
- Short and long ducts available
- Solid foam tires
- Very quiet operation
- CSA certified

Stock #	Model #	BTU/HR NG	BTU/HR LP
F109100	HS115TC	108,000	111,000
F109110	HS190TC	184,000	190,000
F109120	HS250TC	250,000	250,000

Stock #	Diffuser Kits	Description
F109105	Diffuser kit for HS115TC	12" diameter diffuser
F109115	Diffuser kit for HS190TC or HS250TC	16" diameter diffuser
Adapter Rings		
F109106	Duct adapter ring for HS115TC	12" diameter connector ring
F109116	Duct adapter ring for HS190TC or HS250TC	16" diameter connector ring
Ducts		
F109107	Short duct for HS115TC	30' siliconized flex duct, 12" diameter
F109117	Short duct for HS190TC or HS250TC	30' siliconized flex duct, 16" diameter
F109108	Long duct for HS115TC	10' siliconized flex duct, 12" diameter
F109118	Long duct for HS190TC or HS250TC	10' siliconized flex duct, 16" diameter
Storage		
F109119	Painted steel storage box optional for HS190TC/HS250TC	31 1/4" x 20 1/4" x 10" box with lock hasp



# DIRECT FIRED GREENHOUSE HEATERS

## SILVER BULLET FEATURES

- CO2 Generator
- High Grade Stainless Steel Exterior & Burner
- Easy Installation
- 99% Fuel Efficiency
- Automatic Ignition (Easy to operate)
- On-board Diagnostics
- NG-LP Gas Nozzles
- Flame Sensor
- Air Pressure Switch
- Failure Alarm
- High Limit Switch
- Low Voltage Shut-off (Protects motor, Prevents CO build up)
- IP65 Grade Dust & Water Protection



**CERTIFIED FOR  
GREENHOUSES**



## AVAILABLE OPTIONS:

- Delayed Start Relay • Hard Wired Remote Control • Interface Connection to Remote Computer
- Spark Ignition Drying System • Remote Failure Alarm • Remote Thermostat

Stock #	Model #	BTU/HR	Power
F130105	HS250AG	250,000	110V-5.0A
F130110	HS400AG	400,000	110V-9.5A
F130115	HS408AG	400,000	208-230V-5.0A

# HEATSTAR CONSTRUCTION HEATERS

## FORCED AIR KEROSENE/OIL, DIRECT FIRED HEAVY DUTY

Stock #	Model #	BTU/HR
F170250	HS50K	50,000
F170275	HS75KT	75,000
F170325	HS125KT	125,000
F170375	HS175KT	175,000
F170380	HS210KT	210,000



- 25% heavier gauge steel
- Octagonal barrel for strength
- Solid foam flat-free tires
- Large fuel tank



## FORCED AIR PROPANE, DIRECT FIRED, HEAVY DUTY

Stock #	Model #	BTU/HR
F227900	MH35CLP (Cordless)	35,000
F227810	MH60CLP (Cordless)	60,000
F170035	HS35FA	35,000
F170085	HS85FAV	50,000 - 85,000
F170125	HS125FAV	75,000 - 125,000
F170170	HS170FAVT	125,000 - 170,000
F172425	HS400FAVT	250,000 - 400,000

- 25% heavier gauge steel



## FORCED AIR NATURAL GAS OR DUAL FUEL

Stock #	Model #	BTU/HR
F170180	HS170NG	150,000
F151200	HS4000NG/LP	400,000

## INDIRECT FIRED, FORCED AIR KEROSENE/OIL & DUAL FUEL

Stock #	Model #	BTU/HR	Fuel
F151010	HS1000ID	110,000	Diesel Oil
F151020	HS2000ID	205,000	Diesel Oil
F151030	HS3000ID	300,000	Diesel Oil
F151040	HS4000ID-HD	400,000	Diesel Oil With 2-Stage Burner
F151092	HS4000IDG-HD	380,000	Dual fuel - Natural Gas/Propane



## CONVECTION JOB SITE HEATERS

Stock #	Model #	BTU/HR
F170470	HS80CVX	30,000 - 80,000 (LP)
F170473	HS100CVNG	50,000 - 100,000 (NG)
F170475	HS200CVX	75,000 - 200,000 (LP)



## RADIANT JOB SITE HEATERS

Stock #	Model #	BTU/HR
F170700	HS35LP	35,000
F170800	HS125LP	125,000
F170850	HS125NG	125,000
F151490	HS115IR (Oil)	115,000
F151500	HS155IR (Oil)	155,000







## FORCED AIR KEROSENE/OIL, DIRECT FIRED HEAVY DUTY

Stock #	Model #	BTU/HR
F340670	DXH50K	50,000
F340675	DXH75KT	75,000
F340680	DXH135KT	135,000
F340685	DXH185KT	185,000
F340690	DXH135HD	135,000
F340695	DXH190HD	190,000
F340700	DXH215HD	215,000



## FORCED AIR PROPANE, DIRECT FIRED, HEAVY DUTY

Stock #	Model #	BTU/HR
F340705	DXH40FA	40,000
F340710	DXH65FAV	35,000 - 65,000
F340715	DXH90FAV	50,000 - 90,000
F340720	DXH125FAV	10,000 - 125,000
F340725	DXH150FAV	100,000 - 150,000
F340730	DXH170FAVT	125,000 - 170,000
F340735	DXH210FAVT	160,000 - 210,000



All DeWalt Forced Air Propane Heaters come standard with Quiet Burner Technology (QBT) making them 50% quieter than standard forced air propane heaters.

DeWalt Cordless heaters works with all 20V Max® & FlexVolt® batteries. Battery & charger sold separate.

## FORCED AIR PROPANE CORDLESS

Stock #	Model #	BTU/HR	Gas Hose
F340660	DXH70CFAV	27,000 - 68,000	10'
F340665	DXH70CFAV (Canada only)	27,000 - 68,000	15'



## RADIANT JOB SITE HEATER

Stock #	Model #	BTU/HR
F340620	DXH45LP	45,000

## HEAVY DUTY ELECTRIC HEATERS

- Industrial housing - electrostatic powder-coat finish ensures long life and protection for internal components
- Dual coil support - eliminates coil rattle and reduces coil stress
- Two-stage operation - built for versatile applications
- Thermostatically controlled - can be operated unattended
- L.E.D. heat indicator light - easily identify when in operation

Stock #	Model #	BTU/HR (Kw)	Volt
F340635	DXH165	5,630 (1.65)	120V (Single phase)
F340640	DXH330	11,260 (3.3)	240V (Single phase)
F340645	DXH1000TS	23,884-Lo/34,121-Hi (7-Lo/10-Hi)	240V (Single phase)
F340650 (Cart Included)	DXH2000TS	44,357-Lo/68,242-Hi (13-Lo/20-Hi)	240V (Single phase)
F340655 (Cart Included)	DXH20003TS	44,357-Lo/68,242-Hi (13-Lo/20-Hi)	240V (Three phase)





# PROPANE TORCHES & PORTABLE WASHING MACHINE

## FEATURES

- Needle valve adjustment
- Excess flow P.O.L. fitting
- 10' hose included
- Bulk display cartons
- CSA certified



Stock #	Model #	BTU/HR	Ignition
F272601	MH400PT	400,000	Striker
F272602	MH500LPT	500,000	Striker
F272603	MH500DPT	500,000	Piezo

## PORTABLE WASHING MACHINES

### FEATURES

- Top loading single tub
- 4.40lb wash capacity
- Spin feature
- 120V AC operation or can be used with a DC to AC power inverter
- Bottom mounted agitator
- Agitating wash action with timer control
- Strong ABS plastic housing
- External drain tube



Stock #	Description
F235884	Portable Single Tub Washing Machine



## PORTABLE PROPANE STOVES AND SHOWER SYSTEMS

### FEATURES

- Welded angle iron burners are tougher, stronger, and more durable than cast iron
- Aluminum cast burners for better combustion
- Range style cook-top with variable temperature control
- Adjustable legs
- For use with propane *(hose and regulator required but not included)*

Stock #	Description
F235825	Single Burner Angle Iron Stove
F235830	Double Burner Angle Iron Stove
F235835	Triple Burner Angle Iron Stove
F173071	5' Propane Hose Assembly
F173072	12' Propane Hose Assembly



*Not for use in Canada*



## PORTABLE PROPANE SHOWER SYSTEMS

### FEATURES

- Electronic ignition
- Variable temperature control
- Anti-scald protection
- Safety tip-over protection
- Instant hot water
- Runs off a 1 lb. cylinder,
  - Connects to a 20lb. tank w/optional hose
- Quick connect pump & shower head
- CSA certified

Stock #	Model #	BTU/HR
F235300	XB13	12,000
F235325	XW18	17,000
F235350	XCW20	18,000



*Optional Accessories:*  
**F273701** 5' hose assembly  
**F273702** 12' hose assembly



# LP GAS RUBBER HOSE

High Pressure Rubber Hose Designed to Meet UL21, CGA, Type1, EN, British-BS and ASTM Standards. Constructed from High Grade Aerospace Rubber Compounds. Resists wear 50% More than Other Leading Brands. Superior Cold Weather Flexibility to -65°F. Excellent for LPG Transportation, Vapor Lines, Plant Use, and Most Other Applications.

## HIGH PRESSURE L.P. GAS HOSE (BULK REELS\*)

Stock #	I.D. (in)	O.D. (in)	Max W.P. (psi)	Cover	Standard Pkg *
960000	1/4"	.61"	350	Smooth	200'
960010	3/8"	.76"	350	Smooth	200'
960020	1/2"	.937"	350	Smooth	200'
960030	3/4"	1.25"	350	Smooth	200'
960040	1"	1.5"	350	Smooth	200'
960045	1"	1.5"	350	Smooth	150'
960050	1 1/4"	1.82"	350	Wrap	100'
960055	1 1/4"	1.82"	350	Smooth	200'
960060	1 1/2"	2.16"	350	Wrap	100'
960070	2"	2.75"	350	Wrap	100'
960080	3"	3.95"	350	Wrap	100'

## \*CONTINUOUS RUN LENGTHS - MINIMIZES SCRAP

### Construction:

- Tube: Extruded Nitrile (NBR)
- Cover: Specially Compounded Neoprene (CR)
  - .25" - 1" smooth covered
  - 1.25" + wrap covered
- Reinforcement: Textile
- Min. Burst: 1,750 PSI (5:1)
- Working Temperature: -65°F to +180°F



Stock #	TRANSFER / DELIVERY HOSES
964050	3/4" X 15FT ASSY, 3/4" MNPT x 3/4" MNPT, STEEL
964055	3/4" X 18FT ASSY, 3/4" MNPT x 3/4" MNPT, STEEL
964000	3/4" X 100FT ASSY, 3/4" MNPT x 3/4" MNPT, STEEL
964001	3/4" X 125FT ASSY, 3/4" MNPT x 3/4" MNPT, STEEL
964002	3/4" X 150FT ASSY, 3/4" MNPT x 3/4" MNPT, STEEL
965060	1" X 19 FT ASSY, 1" MNPT X 1" MNPT (TRANSPORT)STEEL
965000	1" X 100FT ASSY, 1" MNPT x 1" MNPT, STEEL
965001	1" X 125FT ASSY, 1" MNPT x 1" MNPT, STEEL
965002	1" X 150FT ASSY, 1" MNPT x 1" MNPT, STEEL
965003	1" X 175FT ASSY, 1" MNPT x 1" MNPT, STEEL
965004	1" X 200FT ASSY, 1" MNPT x 1" MNPT, STEEL

# LP GAS RUBBER HOSE ASSEMBLIES

Stock #	COMMON HOSE ASSEMBLIES*
966050	1 1/4" X 10FT ASSY, STEEL MNPT X MNPT
966055	1 1/4" X 12FT ASSY, STEEL MNPT X MNPT
966060	1 1/4" X 15FT ASSY, STEEL MNPT X MNPT
966065	1 1/4" X 20FT ASSY, STEEL MNPT X MNPT
966064	1 1/4" X 19FT ASSY, (TRANSPORT)MNPT X MNPT
966000	1 1/4" X 100 FT ASSY MNPT X MNPT SMOOTH COVER
966001	1 1/4" X 125 FT ASSY MNPT X MNPT SMOOTH COVER
966002	1 1/4" X 150 FT ASSY MNPT X MNPT SMOOTH COVER
967000	1 1/2" X 10FT ASSY, STEEL MNPT X MNPT
967001	1 1/2" X 12FT ASSY, STEEL MNPT X MNPT
967002	1 1/2" X 15FT ASSY, STEEL MNPT X MNPT
967003	1 1/2" X 20FT ASSY, STEEL MNPT X MNPT
968050	2" X 10FT ASSY, STEEL MNPT X MNPT
968055	2" X 12FT ASSY, STEEL MNPT X MNPT
968060	2" X 15FT ASSY, STEEL MNPT X MNPT (PLANT)
968065	2" X 19FT ASSY, STEEL MNPT X MNPT (TRANSPORT)
968070	2" X 20FT ASSY, STEEL MNPT X MNPT
968075	2" X 25 FT ASSY, STEEL MNPT X MNPT
968080	2" X 30 FT ASSY, STEEL MNPT X MNPT
968085	2" X 50 FT ASSY, STEEL MNPT X MNPT

Stock #	BULK LPG FITTINGS / COUPLINGS
951000	1/4" BARB x 1/4" FSAE, STEEL W/ ZINC COATING
951001	1/4" BARB X 1/4" MNPT, STEEL W/ ZINC COATING
952000	3/8" BARB X 3/8" MNPT, STEEL W/ ZINC COATING
952001	3/8" BARB X 3/8" FSAE, STEEL W/ ZINC COATING
953000	1/2" BARB X 1/2" FSAE, STEEL W/ ZINC COATING
953001	1/2" BARB X 1/2" MNPT, STEEL W/ ZINC COATING
954000	3/4" BARB X 1/2" MNPT, STEEL W/ ZINC COATING
954001	3/4" BARB X 1/2" FSAE STEEL W/ ZINC COATING
954002	3/4" BARB X 3/4" FSAE, STEEL W/ ZINC COATING
954003	3/4" BARB X 3/4" MNPT, STEEL W/ ZINC COATING
955000	1" BARB X 1" FSAE, STEEL W/ ZINC COATING
955001	1" BARB X 1" MNPT, STEEL W/ ZINC COATING
956000	1 1/4" BARB X 1 1/4" FSAE, STEEL W/ ZINC COATING
956001	1 1/4" BARB X 1 1/4" MNPT, STEEL W/ ZINC COATING
957000	1 1/2" BARB X 1 1/2" MNPT, STEEL W/ ZINC COATING
958000	2" BARB X 2" FSAE SWIVEL, STEEL W/ ZINC COATING
958001	2" BARB X 2" MNPT, STEEL W/ ZINC COATING
958002	3" BARB X 3" MNPT, STEEL W/ ZINC COATING
951005	1/4" BRASS BARB X FSAE, SWIVEL FITTING
952005	3/8" BRASS BARB X FSAE, SWIVEL FITTING
953005	1/2" BRASS BARB X FSAE, SWIVEL FITTING
951006	1/4" BRASS HD FERRULE
952006	3/8" BRASS HD FERRULE
953006	1/2" BRASS HD FERRULE
951010	1/4" BRASS BARB X 9/16" LHT FEMALE, SWIVEL
951011	BRASS 1/4" BARB X 1/4" MNPT
952010	BRASS 3/8" BARB X 3/8" MNPT
953010	BRASS 1/2" BARB X 1/2" MNPT

Enerco Hose & Hose Assemblies are Recognized by UL 569, UL 21 & CAN 1-8.1

\* Custom Lengths & Fittings Available on Request.

# LP GAS THERMOPLASTIC HOSE

Largest Domestic Manufacturer of L.P. Gas Hose.

L.P. Gas Hose for Outdoor Cooking, RV's and Heating Appliances.

Available in Bulk, Finished Hose Assemblies, or Cut-Lengths.

## HIGH PRESSURE L.P. GAS HOSE (BULK REELS)

Stock #	Normal I.D.	Normal O.D.	Max W.P.	Wt. Per Ft.	Standard Pkg Qty
76208	1/4"	0.505"	350 PSI	.078 lbs	500 ft
76209	5/16"	0.56"	350 PSI	.099 lbs	500 ft
76210	3/8"	0.65"	350 PSI	.119 lbs	500 ft
76211	1/2"	0.79"	350 PSI	0.178	300 ft

- 1/4", 5/16", 3/8" I.D. High Pressure Hose  
Applications: Outdoor Gas Grills, RV Hose, Turkey Fryers, Fish Cookers, Torches, Patio & Portable Heaters.
- 1/2" I.D. Heavy Duty High Pressure Hose  
Applications: Agricultural Weed Burners, Pig/Poultry House Sanitation Equipment, Pig/Poultry Confinement Heater Connectors, RV Trunk Line Connections, Large Volume LPG Generators, Construction Heaters, Temporary Supply Connectors, On-Site Incinerators, Hot Tar Roofing Kettle Supply, Delivery Hoses.

## LOW PRESSURE L.P. GAS HOSE (BULK REELS)

Stock #	Normal I.D.	Normal O.D.	Max W.P.	Wt. Per Ft.	Standard Pkg Qty
76204	1/4"	0.495"	1 PSI	.084 lbs	500 ft
76205	5/16"	0.56"	1 PSI	.098 lbs	500 ft
76206	3/8"	0.65"	1 PSI	.130 lbs	500 ft

- 1/4", 5/16", 3/8" I.D. Low Pressure Hose  
Applications Under 1 PSI



Enerco High & Low Pressure Hoses & Hose Assemblies are Recognized by UL 569, UL 21 & CSA 1-8.3. Thermoplastic Hose and Hose Couplings for Conducting Propane and Natural Gas for use in Canada.



# COMMON LP GAS THERMOPLASTIC HOSE ASSEMBLIES

1/4" ID HOSE COMPLETE ASSEMBLIES	
71142 Series	1/4" Inverted Male Flare x Full Flow P.O.L. w/ Handwheel
71142-XX	Available in 15", 20", 30" and 36"
*71144 Series	1/4" Inverted Male Flare x Excess Flow Soft Nose P.O.L.
71144-XX	Available in 12", 15", 18", 24", 30", 36", 48", 60", 72", 120" and 144"
*71149 Series	3/8" Female Flare Fittings at Both Ends
71149-XX	Available in 12", 18", 24", 36", 48", 60", 72", 84", 96", 120", 144", 180" and 240"
71152 Series	3/8" Male Pipe at Both Ends
71152-XX	"Available in 22"
*71153 Series	1/4" Male Pipe at Both Ends
71153-XX	Available in 14", 22", 24", 36" and 300"
*71158 Series	Green Appliance End Fitting x 1/4" Inverted Male Flare
71158-XX	Available in 12", 15", 18", 24", 30", 36", 48", 60" and 144"
71156 Series	Soft Nose P.O.L. x 1/4" Male Pipe Thread
71156-XX	"Available in 18"
*71163 Series	3/8" Female Flare x 3/8" Male Pipe Thread
71163-24	Available in 24", 30", 36", 48", 60", 72", 96", 144", and 180"
*71168 Series	3/8" Male Flare Fittings at Both Ends
71168-XX	Available in 24", 36", 48", 60" and 144"
71178 Series	3/8" Male Pipe x 3/8" Female Pipe
71178-XX	Available in 24", 36", 48", 60", 72" and 144"
*71187 Series	3/8" Male Flare x 1/4" Female Pipe Thread
71187-XX	Available in 24", 36", 48", and 60"
71189 Series	1/4" Female Pipe at Both Ends
71189-XX	"Available in 36"
*71191 Series	3/8" Male Pipe Thread x 3/8" Male Flare
71191-XX	Available in 24", 36", 48", and 60"
*71198 Series	3/8" Male Flare x 1/4" Male Pipe Thread
71169-XX	Available in 24", 36", 48", and 60"
71474 Series	1/4" Male Pipe Thread x 1/4" Female Pipe Thread
71474	"Available in 15' (Ft)
71475 Series	1/4" Male Pipe x Excess Flow P.O.L.
71475	"Available in 12' (Ft)
71477 Series	1/4" Female Pipe x Excess Flow P.O.L.
71477	Available in 12' (Ft)

3/8" ID HOSE COMPLETE ASSEMBLIES	
71120 Series	3/8" Female Flare Fitting x 3/8" Male Pipe
71120	"Available in 40"
*71169 Series	3/8" Female Flare Fittings at Both Ends
*71169-12	Available in 12", 18", 24", 30", 36", 48", 60", 72", 84", 96", 108", 120", 132", 144", 180", 240" and 300"
71180 Series	(3/8" Female Flare x 1/4" Male Pipe Thread) (3/8" ID High Pressure Hose)
71180-XX	"Available in 36"
71470 Series	(3/8" Male Pipe Thread x 3/8" Female Pipe Thread)
71470	"Available in 15' (Ft)
71473 Series	(1/2" Female Flare x 3/8" Male Pipe Thread) (3/8" ID High Pressure Hose)
71473-XX	"Available in 40" and 72"

LPG FITTINGS/COUPLINGS		
	Hose ID Size	Ferrules
76259	1/4" ID	Ferrule Brass for 1/4" Thermoplastic
76269	1/4" ID	Ferrule Stainless Steel for 1/4" Thermoplastic
76254	3/8" ID	Ferrule Brass for 3/8" Thermoplastic
76270	3/8" ID	Ferrule Stainless Steel for 3/8" Thermoplastic
		***Please call for 5/16" and 1/2" Ferrules***
	Hose ID Size	Hose Barb x Pipe Fittings
76222	1/4" ID	BARB 1/4 ID X 1/4MP
76223	1/4" ID	BARB 1/4 ID X3/8MP
76220P	1/4" ID	BARB 1/4 ID X 3/8FP
76219	1/4" ID	BARB 1/4 ID X 1/4FP
76233	3/8" ID	BARB 3/8 ID X 3/8MP
76283	3/8" ID	BARB 3/8 ID X 1/4MP
76288P	3/8" ID	BARB,3/8ID X 3/8 FP Swivel
	Hose ID Size	Hose Barb x Flare Fittings
76224	1/4" ID	BARB 1/4 ID X 1/4 FFS
76225	1/4" ID	BARB 1/4 ID X 3/8SAE FF
76226	1/4" ID	BARB 1/4 ID X 3/8 SAE MF
76227	1/4" ID	BARB 1/4 ID X 1/4 INVERTED FLARE
76289	3/8" ID	BARB 3/8 ID X 1/2FF SW
76235	3/8" ID	BARB 3/8 ID X 3/8SAE FF 45D

\* = UL or CSA listed Assemblies UL 569 and CGA listed Hose Assemblies (less than 60")  
/ UL 21 are 61" or Longer in Length. These assemblies have a working pressure of 350psi with a 1750psi burst rating

When ordering above listed hose assemblies, please use stock number shown then a dash with the two digit size marked after the dash in inches.  
Examples: 71163-12. This is a 12 inch 71163 hose assembly. / 71163-15 This is a 15 inch 71163 hose assembly. Note: All hoses are 1/4" inside diameter except for the 71120, 71169 and 71473 Series, which is 3/8" inside diameter. Additional discounts may apply to larger volumes. Prices are subject to change without notice. Check with local rep or Enerco Factory consultant for custom sizes and other offerings.

# PROPANE HOSES, FITTINGS, REGULATORS



Bulk Stock #	Description - 1 Per Pk	STOCK # CLAMSHELL
73827	Horizontal Propane Two Stage Regulator	F173868
73863	Horizontal Propane Two Stage Regulator w/ POL	F173863
73763	Vertical Propane Two Stage Regulator	F173763
73766	Propane Auto-Changeover Two Stage Regulator	F173766
73767	Propane Low Pressure Regulator (up to 160,000 BTU)	F173767
73655	Excess Flow Soft Nose POL x 1/4" Male Pipe	F173655
73762	Full Flow Soft Nose POL x 1/4" Male Pipe	F173762
76497	Propane Acme Nut (Green) Up To 200,000 BTU	F176497
711633-30	30" Propane Hose Assembly (3/8" Male Pipe Thread x 3/8" Female Flare) Clamshell	F171163-30
711633-60	60" Propane Hose Assembly (3/8" Male Pipe Thread x 3/8" Female Flare) Clamshell	F171163-60
71169-XX XX = Inches	Propane 3/8" ID Hose Assembly (3/8" Female Flare x 3/8" Female Flare) **Available in Bulk only** Lengths (XX) avail in 12", 18", 30", 36", 48", 60" and 72"	N/A
71473-XX XX=Inches	Propane 3/8" ID Hose Assembly (3/8" Female Flare x 3/8" Female Flare) Lengths (XX) avail in 40" and 72"	N/A
F171158-XX XX=Inches	Propane Hose Assembly (Green Acme Nut x 1/4" Male Inverted Flare) - Lengths (XX) avail in 12", 15", 18", 20", 24", 30", 36", 48" and 60"	N/A
N/A	2 Tank Hook Up Kit 30" Hose (2x) POL Hose x POL Adapter Tee)	F173737

## Tube Heater Installation Kits and Connections

Bulk Stock #	Description - 1 Per Pk	STOCK # CLAMSHELL
16405	3/4" ID Stainless Steel Flex Gas Connector w/ fittings	N/A
16360	3/4" Gas Shut Off Valve	N/A
16401	1/2" ID Stainless Steel Flex Gas Connector w/ fittings	N/A
16359	1/2" Gas Shut Off Valve	N/A

\*Installation kits include: 24V thermostat, vent Cap, 24" 1/2" ID stainless steel flex gas connector, gas shut off valve and chain kits required to hang heater

Bulk Stock #	Description - 1 Per Pk	STOCK # CLAMSHELL
F111751	Installation kit for 20' tube heater	N/A
F111752	Installation kit for 30' tube heater	N/A
F111753	Installation kit for 40' tube heater	N/A
F111754	Installation kit for 50' tube heater	N/A
F111755	Installation kit for 60' tube heater	N/A



# PROPANE HOSES, FITTINGS, REGULATORS

BULK	CONTENT DESCRIPTION - 1 Unit per Package	CLAMSHELL	BULK	CONTENT DESCRIPTION - 1 Unit per Package	CLAMSHELL
N/A	12' RV Quick Connect Hose Assembly (Male QC plug x 1"20 Male)	F171117	73717	5' Propane Extension Hose Assembly (1/4" Male Pipe x 1/4" Female Pipe)	F173717
71138-20	20" Propane Hose Assembly (Green Acme x 1/4" MP)	F171138-20	73891	Propane Regulator 0-20 psi High Pressure	F173719
71144-60	5' Propane Hose Assembly (Excess Flow POL x 1/4" Male Inverted Flare)	F171144-60	73729	1/4" Male Pipe Thread x 1/4" Inverted Female Flare	F173729
71144-144	12' Propane Hose Assembly (Excess Flow POL x 1/4" Male Inverted Flare)	F171144-144	N/A	Stay A While RV Hose and Adapter Kit	F173733
71149-36	3' Propane Hose Assembly (3/8" Female Flare x 3/8" Female Flare)	F171149-36	N/A	Stay A While Deluxe RV Hose and Adapter Kit	F173734
71149-72	6' Propane Hose Assembly (3/8" Female Flare x 3/8" Female Flare)	F171149-72	N/A	Stay Flow Plus RV Hose and Adapter Kit	F173735
71158-12	12" Propane Hose Assembly (Green Acme Nut x 1/4" Male Inverted Flare)	F171158-12	N/A	2 Tank Hook Up Kit (30" (2x) POL Hose x POL Adapter Tee)	F173737
71158-15	15" Propane Hose Assembly (Green Acme Nut x 1/4" Male Inverted Flare)	F171158-15	73751P	Brass Propane Adapter Tee	F173751
71158-18	18" Propane Hose Assembly (Green Acme Nut x 1/4" Male Inverted Flare)	F171158-18	73752	Brass Stay A While Tee	F173752
71158-20	20" Propane Hose Assembly (Green Acme Nut x 1/4" Male Inverted Flare)	F171158-20	73753	90° Stay Flow Adapter	F173753
71158-24	2' Propane Hose Assembly (Green Acme Nut x 1/4" Male Inverted Flare)	F171158-24	73754	Propane Adapter (1/4" Male Pipe x 1"20 Female Throwaway Cylinder Threads)	F173754
71158-30	30" Propane Hose Assembly (Green Acme Nut x 1/4" Male Inverted Flare)	F171158-30	73755	Propane Adapter (1/4" Male Pipe x 1"20 Male Throw- away Cylinder Threads)	F173755
71158-36	3' Propane Hose Assembly (Green Acme Nut x 1/4" Male Inverted Flare)	F171158-36	73758	Propane Bulk Tank Adapter (Male POL x 1"20 Male Throwaway Cylinder Threads)	F173758
71158-48	4' Propane Hose Assembly (Green Acme Nut x 1/4" Male Inverted Flare)	F171158-48	73760	90° Elbow Adapter (Male POL x 1"20 Male Throwaway Cylinder Threads)	F173760
71158-60	5' Propane Hose Assembly (Green Acme Nut x 1/4" Male Inverted Flare)	F171158-60	73762	Full Flow Soft Nose POL x 1/4" Male Pipe	F173762
71161	22" Replacement BBQ Hose and Regulator	F171161	73763	Vertical Propane Two Stage Regulator	F173763
71163-30	30" Propane Hose Assembly (3/8" Male Pipe Thread x 3/8" Female Flare)	F171163-30	73766	Propane Auto-Changeover Two Stage Regulator	F173766
71163-60	5' Propane Hose Assembly (3/8" Male Pipe Thread x 3/8" Female Flare)	F171163-60	73767	Propane Low Pressure Regulator (up to 160k BTU)	F173767
71715P	Propane "Y" Male Adapter (POL x (2) Male 1"20 Throwaway Fittings)	F171715	73791	1/4" Male Pipe Thread x Female POL w/ Acme Thread	F173791
71735P	Propane "Y" Female Adapter (POL x (2) Acme Threads / POL Threads)	F171735	73831	30 psi High Pressure LP Regulator 1/4" FP In and Outlets	F173830
N/A	Tank Foot® Tank Stabilizer (6 packs only)	F173169	73863	Horizontal Propane Two Stage Regulator w/ POL	F173863
73655	Excess Flow Soft Nose POL x 1/4" Male Pipe	F173655	73827	Horizontal Propane Two Stage Regulator	F173868
73701	5' Propane Hose Assembly (POL x Male 1"20 Throwaway Cylinder Threads)	F173701	76130	9/16" LH Male Pipe Threads x 1"20 Throwaway Cylinder Threads	F176130
73702	12' Propane Hose Assembly (POL x Male 1"20 Throwaway Cylinder Threads)	F173702	76136	Propane Low Pressure Regulator (up to 75k BTU)	F176136
73703-60	5' Propane Hose Assembly (Acme Nut x Male 1"20 Throwaway Cylinder Threads) Bulk	F173703-60	76140	1"20 Throwaway Cylinder Threads x 1/4" Female Pipe Threads	F176140
73703-144	12' Propane Hose Assembly (Acme Nut x Male 1"20 Throwaway Cylinder Threads)	F173703-144	76152	1/4" Male Pipe Threads x 9/16" LH Male Threads	F176152
73710	5' Propane Hose Assembly (Swivel 1"20 Male Throw- away Cyl x Swivel 1"20 Female Throwaway Cylinder)	F173710	76153	3/8" Male Pipe Threads x 9/16" LH Male Threads	F176153
73711	12' Propane Hose Assembly (Swivel 1"20 Male Throw- away Cylinder x Swivel 1"20 Female Throw- away Cylinder)	F173711	76154	9/16" Male Pipe Threads x 9/16" LH Male Threads	F176154
73714	Stay Flow RV Hose and Adapter Kit	F173714	76171	Propane "Steak Saver" Adapter	F176171
			N/A	1/4" Full Flow Male Plug x 1/4" Propane/Natural Gas Connector w/ Shut Off Valve	F176181
			N/A	3/8" Full Flow Plug x Propane/Natural Gas 3/8" Quick Connect	F176187
			N/A	1/4" Full Flow Male Plug x 1/4" Propane/Natural Gas Connector	F176190
			76262	3/8" Male Pipe Thread x 3/8" Male Flare Connector	F176262
			76281	1/4" Full Flow Male Plug	F176281
			76350	Propane Gas Gauge	F176342
			N/A	Propane 1"20 Thread Brass Caps (2 pack)	F176400
			76495	Propane Acme Nut (Black) Up To 80k BTU	F176495
			76497	Propane Acme Nut (Green) Up To 200k BTU	F176497



HEATSTAR  
TECHNICAL SERVICE:  
1-866-447-2194



HEATSTAR  
CUSTOMER SERVICE:  
1-866-447-2194



Enerco Group Inc. 4560 West 160th St. Cleveland, Ohio 44135

L363