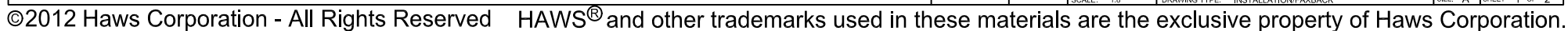
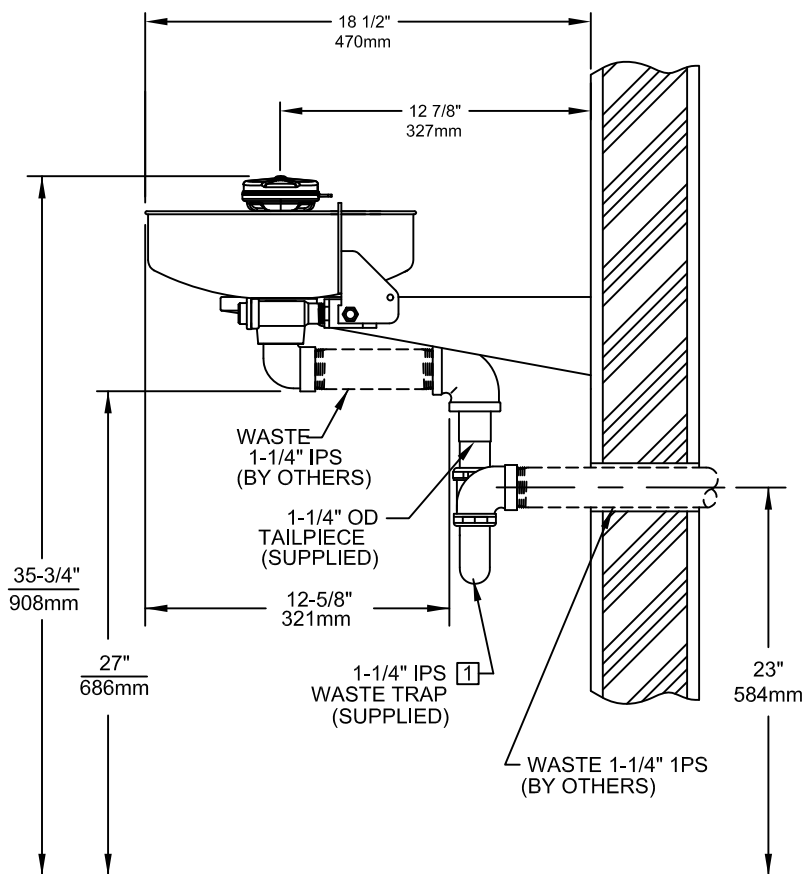




TRAP MUST BE
ACCESSIBLE

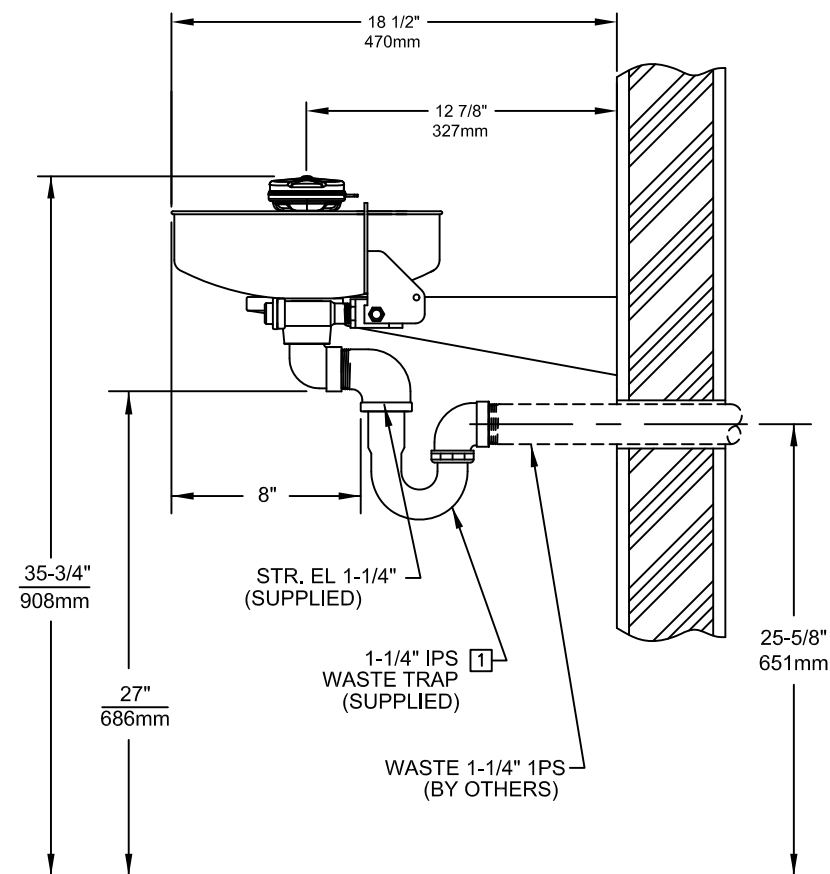
2. DIMENSIONS MAY VARY $\pm 1/2"$ [12.7mm].





OPTION A

ALTERNATE INSTALLATIONS



OPTION B

NOTE:

- 1 TRAP SHOULD BE WRAPPED TO PROVIDE ADDITIONAL USER PROTECTION.

NOTES:

- TO COMPLY WITH ANSI Z358.1-2009 FOR EMERGENCY EYEWASH OR EYE/FACE WASH AND SHOWER EQUIPMENT:
 - UNIT SHALL BE INSTALLED IN ACCORDANCE WITH MANUFACTURER'S INSTRUCTIONS AND ACCEPTABLE PLUMBING PRACTICES.
 - EYEWASH OR EYE/FACE WASH SHALL BE POSITIONED WITH NOZZLES NOT LESS THEN 83.8 CM (33 IN.) AND NO GREATER THAN 114.3 CM (45 IN.) FROM SURFACE ON WHICH USER STANDS AND 15.3 CM (6 IN.) MINIMUM FROM WALL OR NEAREST OBSTRUCTION.
- DIMENSIONS MAY VARY $\pm 1/2$ " [12.7mm].

		1455 KLEPPE LANE SPARKS, NEVADA 89431 (775) 359-4712 FAX (775) 359-7424 E-MAIL: HAWS@HAWS.CO.COM WEBSITE: WWW.HAWS.CO.COM	
		PART NUMBER: 0002080039.D	
ECN NO.	REVISED PER ECN: 4639	BY: HM	MODEL(S): 7360BTWC
DRAWN: FV	DATE: 03/06	CHKD:	INFO FAX DOC #: 27360286
APPROVED:	DATE:	SCALE: 1/8	DRAWING TYPE: INSTALLATION/FAXBACK
SIZE: A SHEET 2 OF 2			DRAWING NUMBER: 13498A00 REV: 8