

PROJECT: _____	UNIT TAG: _____	QUANTITY: _____
REPRESENTATIVE: _____	TYPE OF SERVICE: _____	DATE: _____
ENGINEER: _____	SUBMITTED BY: _____	DATE: _____
CONTRACTOR: _____	APPROVED BY: _____	DATE: _____
	ORDER NO.: _____	DATE: _____

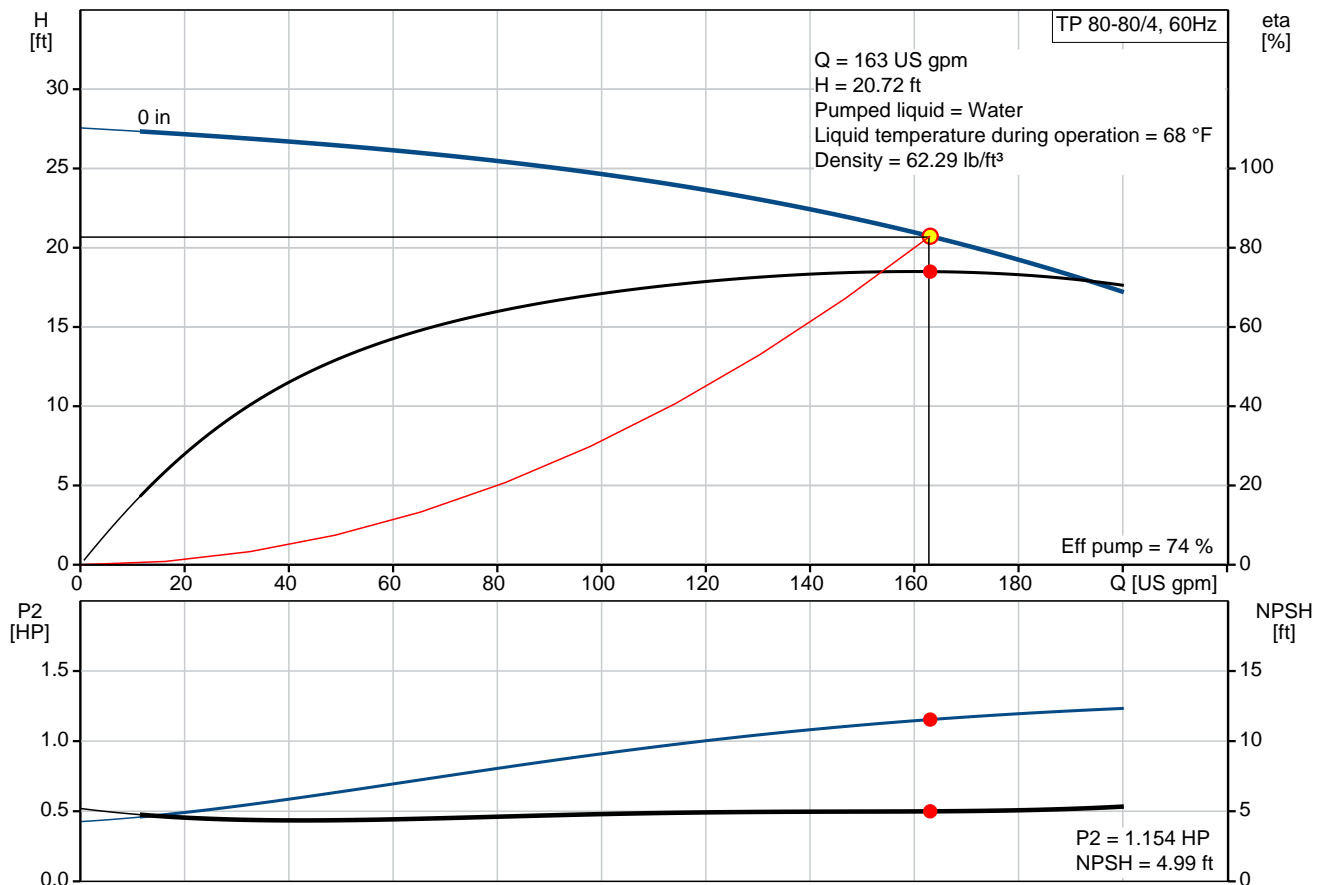


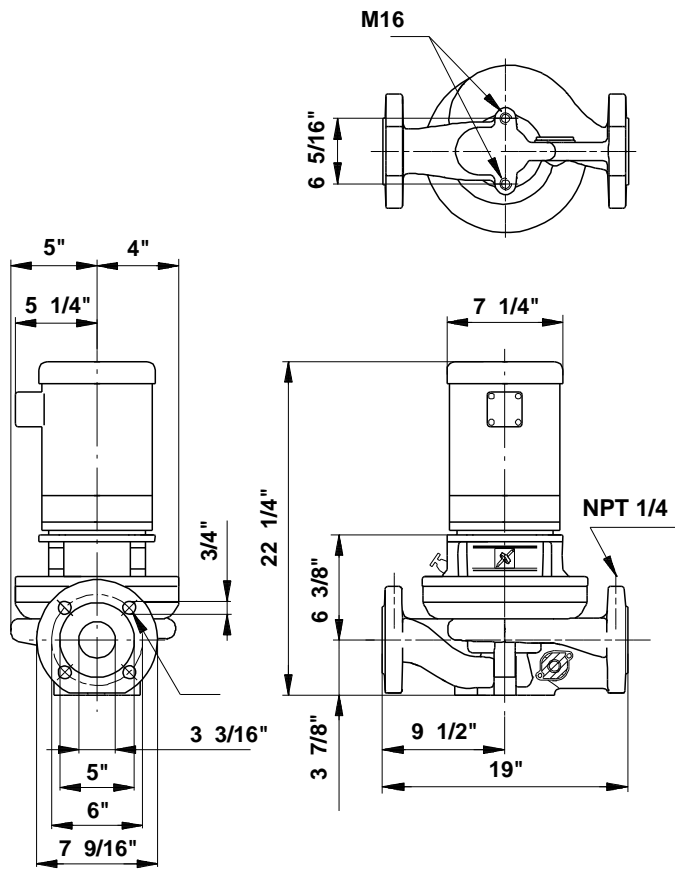
TP 80-80/4

Single-stage in-line pumps

Product photo could vary from the actual product

Conditions of Service	Pump Data	Motor Data
Flow: 163 US gpm	Maximum operating pressure: 145 psi	Rated power - P2: 1.5 HP
Head: 20.72 ft	Liquid temperature range: 5 .. 284 °F	Rated voltage: 115/208-230 V
Efficiency: _____	Maximum ambient temperature: 104 °F	Main frequency: 60 Hz
Liquid: Water	Approvals motor: UL Recognized Component, CSA	Number of poles: 4
Temperature: 68 °F	Shaft seal: BUBE	Insulation class: B
NPSH required: 4.99 ft	Flange standard: ANSI	Motor protection: NONE
Viscosity: _____	Pipe connection: 3"	Motor type: Baldor, TEFC
Specific Gravity: 1.000	Product number: 96411827	Motor_efficiency: 72 %





Materials:

Pump housing: Cast iron
 EN-JL1040
 ASTM 25 B

Impeller: Stainless steel
 DIN W.-Nr. 1.4301
 AISI 304

Material code: A

Tender Text

Product No.: [96411827](#)**TP 80-80/4 A-G-A-BUBE**

Single-stage centrifugal volute in-line single-head pump:

- neck rings and impeller made of stainless steel
- cataphoresis treatment
- shell coupling
- top-pull-out principle for easy maintenance
- optimized hydraulics
- in-line design with opposite suction and discharge ports enabling mounting in pipework or on a concrete foundation
- corrosion resistant maintenance-free mechanical shaft seal.

The motor is a 1-phase AC motor.

Liquid:

Pumped liquid: Water
Liquid temperature range: 5 .. 284 °F
Liquid temperature during operation: 68 °F
Density: 62.29 lb/ft³

Technical:

Speed for pump data: 1760 rpm
Actual calculated flow: 163 US gpm
Resulting head of the pump: 20.72 ft
Primary shaft seal: BUBE
Approvals on motor nameplate: UL Recognized Component, CSA
Curve tolerance: ISO9906:2012 3B

Materials:

Pump housing: Cast iron
EN-JL1040
ASTM 25 B
Impeller: Stainless steel
DIN W.-Nr. 1.4301
AISI 304

Installation:

Maximum ambient temperature: 104 °F
Maximum operating pressure: 145 psi
Flange standard: ANSI
Pipe connection: 3"
Pressure stage: 125 Lb.

Electrical data:

Motor type: Baldor, TEFC
Rated power - P2: 1.5 HP
Main frequency: 60 Hz



Company name:

Created by:

Phone:


Date:

2/20/2018

Rated voltage:	1 x 115/208-230 V
Service factor:	1,15
Rated current:	16/8,2-8 A
Starting current:	228/126-114 A
Cos phi - power factor:	75
Rated speed:	1725 rpm
Motor efficiency at full load:	72 %
Number of poles:	4
Insulation class (IEC 85):	B

Others:

Net weight:	121 lb
Gross weight:	134 lb
Shipping volume:	4.98 ft ³

Position	Count	Description
	1	<p>TP 80-80/4 A-G-A-BUBE</p>  <p>Product No.: 96411827</p> <p>Single-stage centrifugal volute in-line single-head pump:</p> <ul style="list-style-type: none"> - neck rings and impeller made of stainless steel - cataphoresis treatment - shell coupling - top-pull-out principle for easy maintenance - optimized hydraulics - in-line design with opposite suction and discharge ports enabling mounting in pipework or on a concrete foundation - corrosion resistant maintenance-free mechanical shaft seal. <p>The motor is a 1-phase AC motor.</p> <p>Liquid:</p> <p>Pumped liquid: Water</p> <p>Liquid temperature range: 5 .. 284 °F</p> <p>Liquid temperature during operation: 68 °F</p> <p>Density: 62.29 lb/ft³</p> <p>Technical:</p> <p>Speed for pump data: 1760 rpm</p> <p>Actual calculated flow: 163 US gpm</p> <p>Resulting head of the pump: 20.72 ft</p> <p>Primary shaft seal: BUBE</p> <p>Approvals on motor nameplate: UL Recognized Component, CSA</p> <p>Curve tolerance: ISO9906:2012 3B</p> <p>Materials:</p> <p>Pump housing: Cast iron EN-JL1040 ASTM 25 B</p> <p>Impeller: Stainless steel DIN W.-Nr. 1.4301 AISI 304</p> <p>Installation:</p> <p>Maximum ambient temperature: 104 °F</p> <p>Maximum operating pressure: 145 psi</p> <p>Flange standard: ANSI</p> <p>Pipe connection: 3"</p> <p>Pressure stage: 125 Lb.</p> <p>Electrical data:</p> <p>Motor type: Baldor, TEFC</p> <p>Rated power - P2: 1.5 HP</p> <p>Main frequency: 60 Hz</p> <p>Rated voltage: 1 x 115/208-230 V</p>



Company name:

Created by:

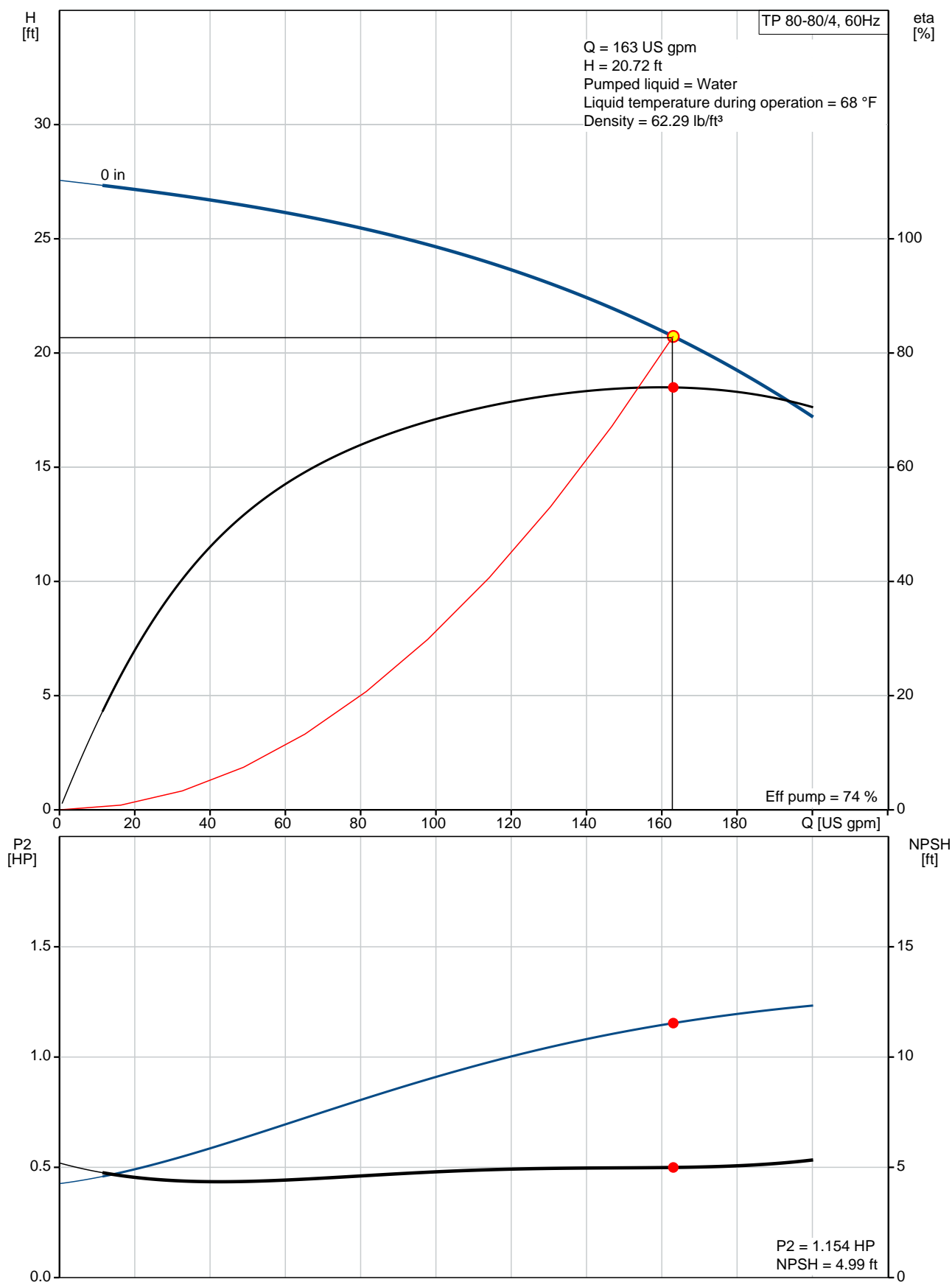
Phone:

Date:

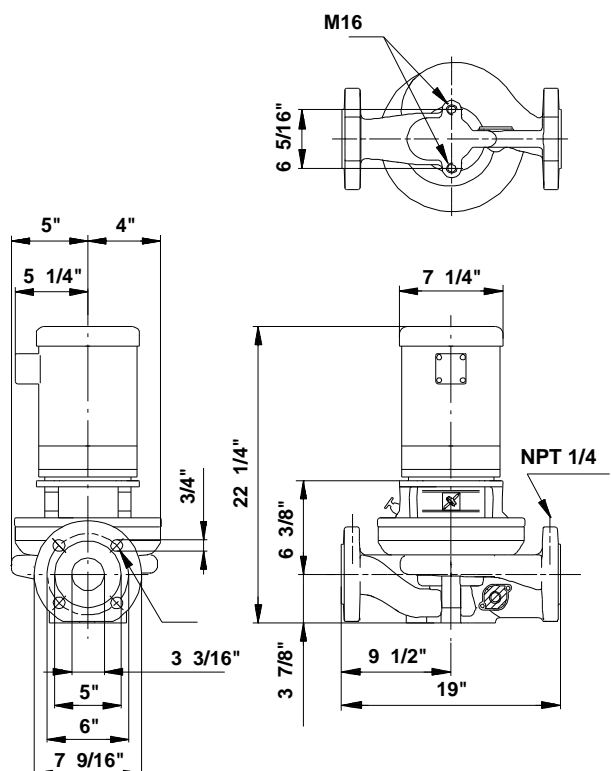
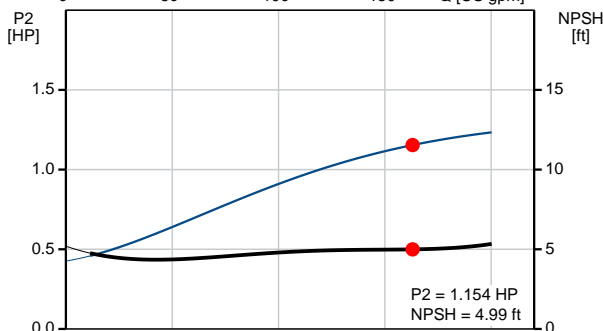
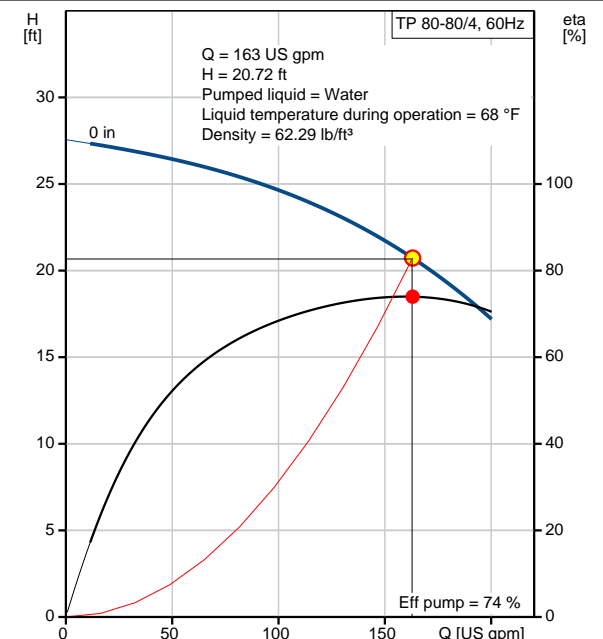
2/20/2018

Position	Count	Description
		Service factor: 1,15 Rated current: 16/8,2-8 A Starting current: 228/126-114 A Cos phi - power factor: 75 Rated speed: 1725 rpm Motor efficiency at full load: 72 % Number of poles: 4 Insulation class (IEC 85): B Others: Net weight: 121 lb Gross weight: 134 lb Shipping volume: 4.98 ft ³

96411827 TP 80-80/4 60 Hz



Description	Value
General information:	
Product name:	TP 80-80/4 A-G-A-BUBE
Product No.:	96411827
EAN:	5700390525255
Technical:	
Speed for pump data:	1760 rpm
Actual calculated flow:	163 US gpm
Resulting head of the pump:	20.72 ft
Head max:	26.25 ft
Primary shaft seal:	BUBE
Approvals on motor nameplate:	UL Recognized Component, CSA
Curve tolerance:	ISO9906:2012 3B
Pump Number:	96405271
Pump version:	A
Materials:	
Pump housing:	Cast iron
	EN-JL1040
	ASTM 25 B
Impeller:	Stainless steel
	DIN W.-Nr. 1.4301
	AISI 304
Material code:	A
Installation:	
Maximum ambient temperature:	104 °F
Maximum operating pressure:	145 psi
Flange standard:	ANSI
Connect code:	G
Pipe connection:	3"
Pressure stage:	125 Lb.
Liquid:	
Pumped liquid:	Water
Liquid temperature range:	5 .. 284 °F
Liquid temperature during operation:	68 °F
Density:	62.29 lb/ft³
Electrical data:	
Motor type:	Baldor, TEFC
Rated power - P2:	1.5 HP
KVA code:	J
Main frequency:	60 Hz
Rated voltage:	1 x 115/208-230 V
Service factor:	1,15
Rated current:	16/8,2-8 A
Starting current:	228/126-114 A
Load current:	18,5/9,5-9,3 A
Cos phi - power factor:	75
Rated speed:	1725 rpm
Motor efficiency at full load:	72 %
Number of poles:	4
Insulation class (IEC 85):	B
Motor protection:	NONE
Motor Number:	86680005
Others:	





Company name:

Created by:

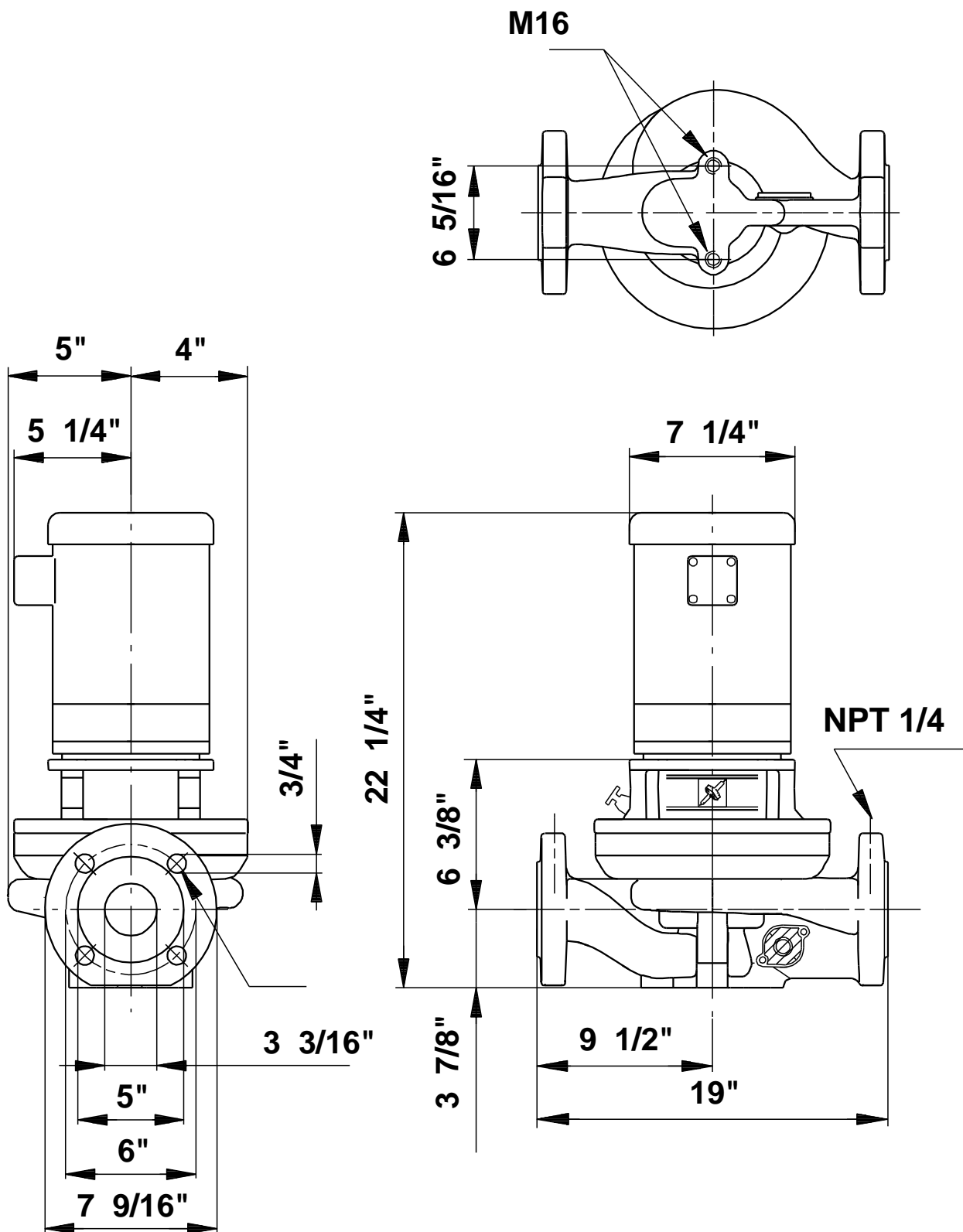
Phone:

Date:

2/20/2018

Description	Value
Net weight:	121 lb
Gross weight:	134 lb
Shipping volume:	4.98 ft ³
Country code:	Namreg

96411827 TP 80-80/4 60 Hz



Note! All units are in [mm] unless otherwise stated.
Disclaimer: This simplified dimensional drawing does not show all details.



Company name:

Created by:

Phone:

Date:

2/20/2018

Order Data:

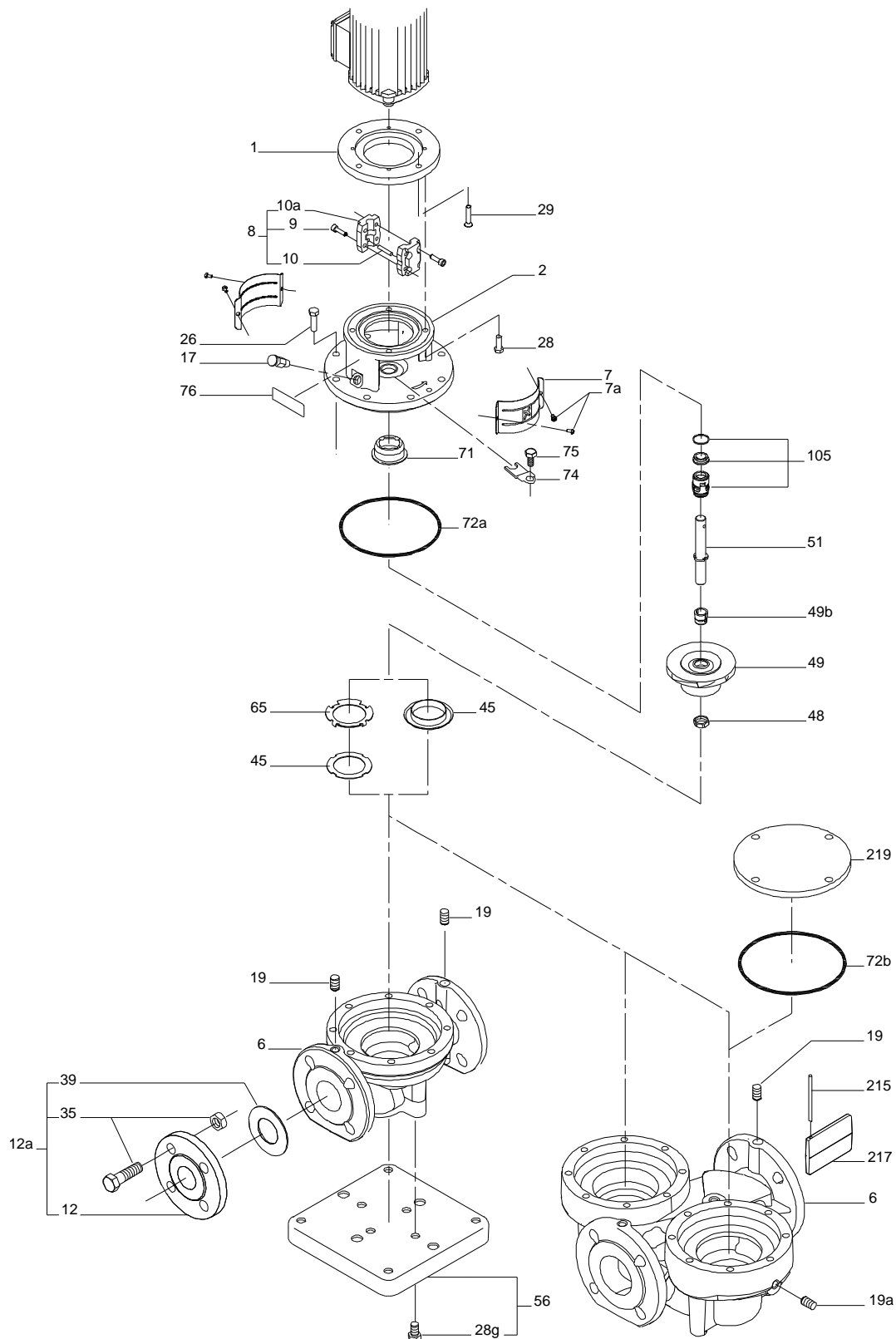
Product name: TP 80-80/4 A-G-A-BUBE

Amount: 1

Product No.: 96411827

Total: Price on request

Exploded view (tm009281 2201)



TM009281

Parts list TP 80-80/4, Prod number 96411827

Valid from 1.6.2003 (0323)

Position	Description	Annotation	Classification data	Part No.	Count	Unit
-	Pump w/o motor				1	pcs
2	Motor stool				1	
6	Pump housing				1	
6	Pump housing				1	
7	Coupling guard				2	
7a	Pan head screw				4	
9	Hex socket head cap screw		Designation: DIN 912		4	
			Length: 20			
			Thread: M6			
10	Shaft pin		Diameter: 5		1	
			Length: 26			
10a	Coupling half				2	
17	Air vent screw				1	
19	Pipe plug				2	
26	Hex head screw		Length: 28		8	
			Thread: M10			
49	Impeller cpl.				1	
49b	Split cone				1	
49b	Split cone nut				1	
72a	O-ring		Diameter: 154		1	
			Material type: EPDM			
			Thickness: 4			
76	Nameplate				1	
105	Shaft seal		Material type: EPDM		1	
	Motor				1	pcs