

|                       |                        |                 |
|-----------------------|------------------------|-----------------|
| PROJECT: _____        | UNIT TAG: _____        | QUANTITY: _____ |
| REPRESENTATIVE: _____ | TYPE OF SERVICE: _____ | DATE: _____     |
| ENGINEER: _____       | SUBMITTED BY: _____    | DATE: _____     |
| CONTRACTOR: _____     | APPROVED BY: _____     | DATE: _____     |
|                       | ORDER NO.: _____       | DATE: _____     |

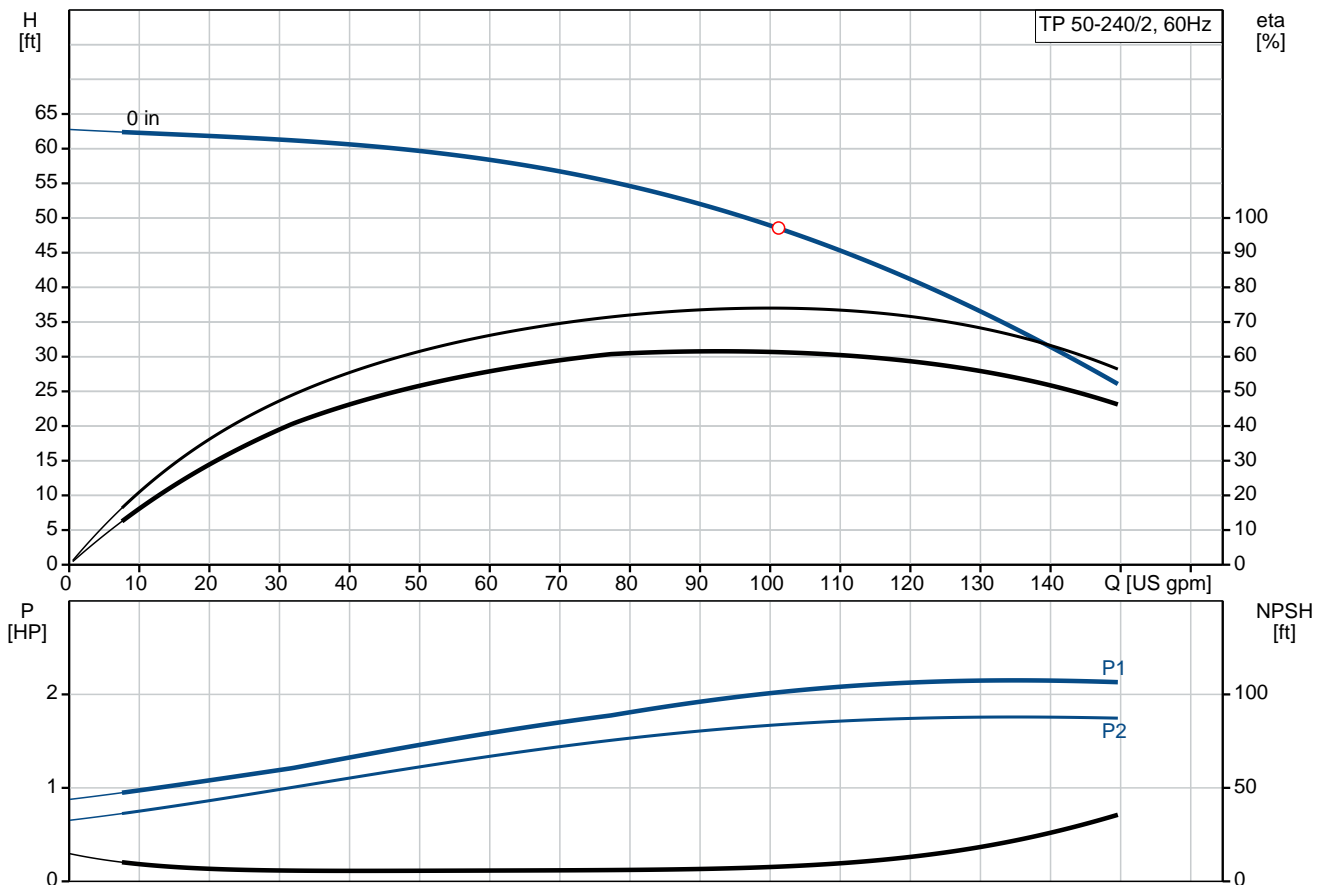


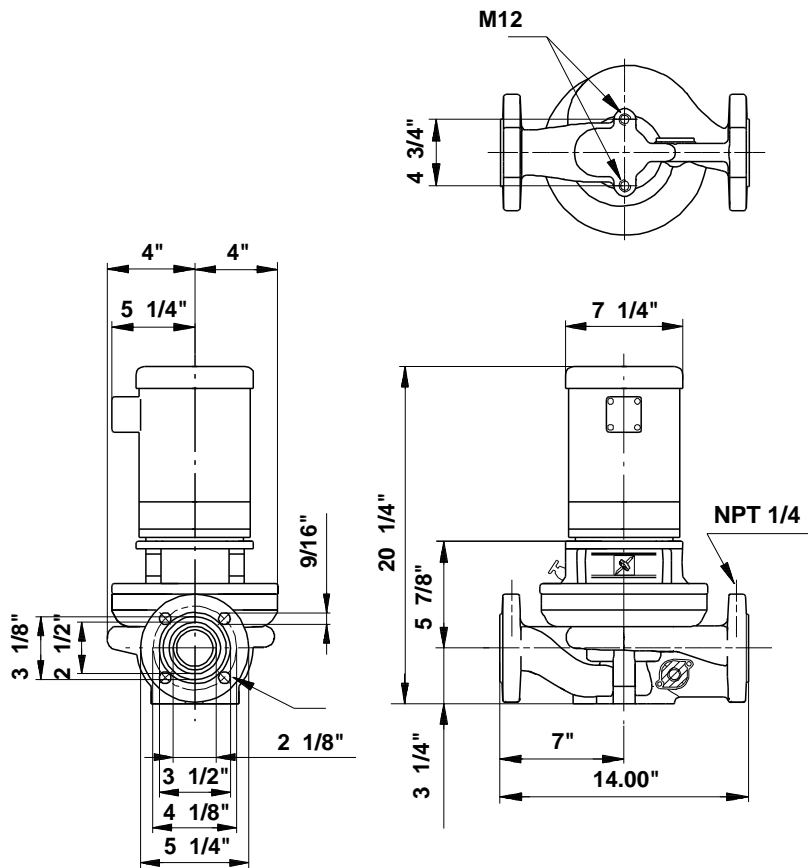
### TP 50-240/2

Single-stage in-line pumps

Product photo could vary from the actual product

| Conditions of Service   | Pump Data                                     | Motor Data                   |
|-------------------------|---|------------------------------|
| Flow: _____             | Maximum operating pressure: 145 psi           | Rated power - P2: 2 HP       |
| Head: _____             | Liquid temperature range: 5 .. 284 °F         | Rated voltage: 208-230/460 V |
| Efficiency: _____       | Maximum ambient temperature: 104 °F           | Main frequency: 60 Hz        |
| Liquid: Water           | Approvals motor: UL Recognized Component, CSA | Number of poles: 2           |
| Temperature: 68 °F      | Shaft seal: BUBE                              | Insulation class: B          |
| NPSH required: ft       | Flange standard: USA                          | Motor protection: NONE       |
| Viscosity: _____        | Pipe connection: 2"                           | Motor type: Baldor, TEFC     |
| Specific Gravity: 1.000 | Product number: 96411819                      | Motor_efficiency: 78.5 %     |





### Materials:

|                |  |
|----------------|--|
| Pump housing:  | Cast iron<br>EN-JL1040<br>ASTM 25 B              |
| Impeller:      | Stainless steel<br>DIN W.-Nr. 1.4301<br>AISI 304 |
| Material code: | A  |

## Tender Text

Product No.: [96411819](#)**TP 50-240/2 A-G-A-BUBE**

Single-stage centrifugal volute in-line single-head pump:

- neck rings and impeller made of stainless steel
- cataphoresis treatment
- shell coupling
- top-pull-out principle for easy maintenance
- optimized hydraulics
- in-line design with opposite suction and discharge ports enabling mounting in pipework or on a concrete foundation
- corrosion resistant maintenance-free mechanical shaft seal.

The motor is a 3-phase AC motor.

**Liquid:**

Pumped liquid: Water  
Liquid temperature range: 5 .. 284 °F  
Liquid temperature during operation: 68 °F  
Density: 62.29 lb/ft<sup>3</sup>

**Technical:**

Speed for pump data: 3490 rpm  
Rated flow: 101 US gpm  
Rated head: 48.56 ft  
Primary shaft seal: BUBE  
Approvals on motor nameplate: UL Recognized Component, CSA  
Curve tolerance: ISO9906:2012 3B

**Materials:**

Pump housing: Cast iron  
EN-JL1040  
ASTM 25 B  
Impeller: Stainless steel  
DIN W.-Nr. 1.4301  
AISI 304

**Installation:**

Maximum ambient temperature: 104 °F  
Maximum operating pressure: 145 psi  
Flange standard: USA  
Pipe connection: 2"

**Electrical data:**

Motor type: Baldor, TEFC  
Rated power - P2: 2 HP  
Main frequency: 60 Hz  
Rated voltage: 3 x 208-230/460 V



**Company name:**

**Created by:**

**Phone:**


**Date:**

2/20/2018

Service factor: 1,15  
Rated current: 5,7-5,4/2,7 A  
Starting current: 38,7-35/17,5 A  
Cos phi - power factor: 93  
Rated speed: 3450 rpm  
Motor efficiency at full load: 78.5 %  
Motor efficiency at 3/4 load: 85.0 %  
Motor efficiency at 1/2 load: 83.0 %  
Number of poles: 2  
Insulation class (IEC 85): B

**Others:**

Net weight: 79.4 lb  
Gross weight: 78 lb  
Shipping volume: 2.33 ft<sup>3</sup>

| Position | Count | Description   |
|----------|-------|---|
|          | 1     | <p><b>TP 50-240/2 A-G-A-BUBE</b></p>  <p>Product No.: <a href="#">96411819</a></p> <p>Single-stage centrifugal volute in-line single-head pump:</p> <ul style="list-style-type: none"> <li>- neck rings and impeller made of stainless steel</li> <li>- cataphoresis treatment</li> <li>- shell coupling</li> <li>- top-pull-out principle for easy maintenance</li> <li>- optimized hydraulics</li> <li>- in-line design with opposite suction and discharge ports enabling mounting in pipework or on a concrete foundation</li> <li>- corrosion resistant maintenance-free mechanical shaft seal.</li> </ul> <p>The motor is a 3-phase AC motor.</p> <p><b>Liquid:</b></p> <p>Pumped liquid: Water</p> <p>Liquid temperature range: 5 .. 284 °F</p> <p>Liquid temperature during operation: 68 °F</p> <p>Density: 62.29 lb/ft³</p> <p><b>Technical:</b></p> <p>Speed for pump data: 3490 rpm</p> <p>Rated flow: 101 US gpm</p> <p>Rated head: 48.56 ft</p> <p>Primary shaft seal: BUBE</p> <p>Approvals on motor nameplate: UL Recognized Component, CSA</p> <p>Curve tolerance: ISO9906:2012 3B</p> <p><b>Materials:</b></p> <p>Pump housing: Cast iron<br/>EN-JL1040<br/>ASTM 25 B</p> <p>Impeller: Stainless steel<br/>DIN W.-Nr. 1.4301<br/>AISI 304</p> <p><b>Installation:</b></p> <p>Maximum ambient temperature: 104 °F</p> <p>Maximum operating pressure: 145 psi</p> <p>Flange standard: USA</p> <p>Pipe connection: 2"</p> <p><b>Electrical data:</b></p> <p>Motor type: Baldor, TEFC</p> <p>Rated power - P2: 2 HP</p> <p>Main frequency: 60 Hz</p> <p>Rated voltage: 3 x 208-230/460 V</p> <p>Service factor: 1,15</p> |



Company name:

Created by:

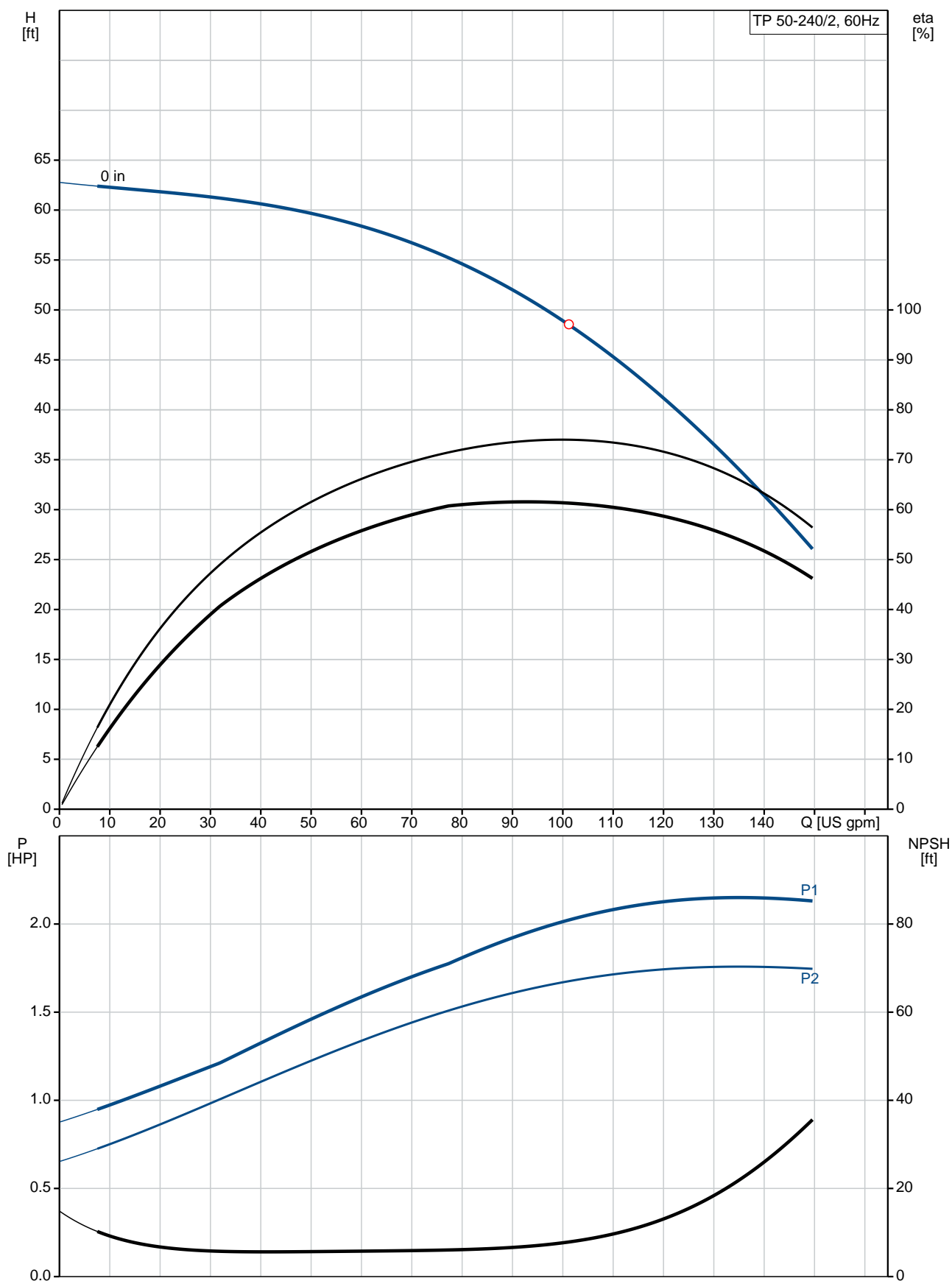
Phone:

Date:

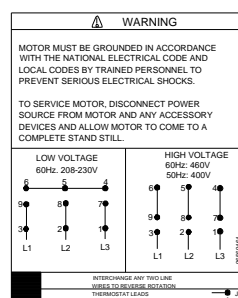
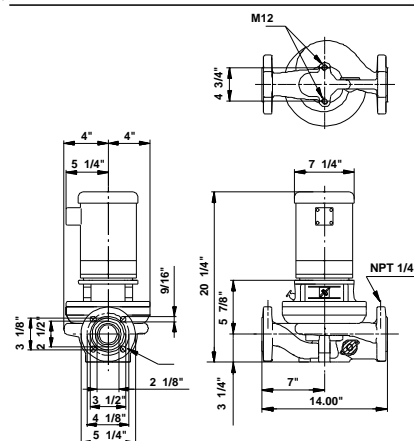
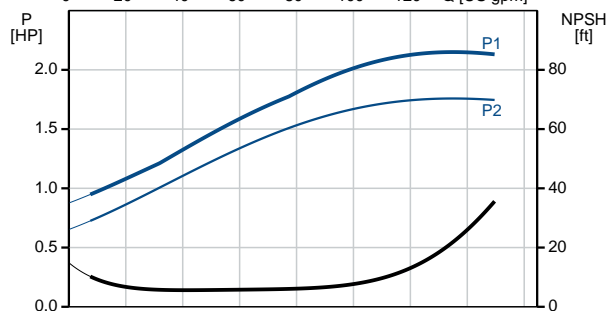
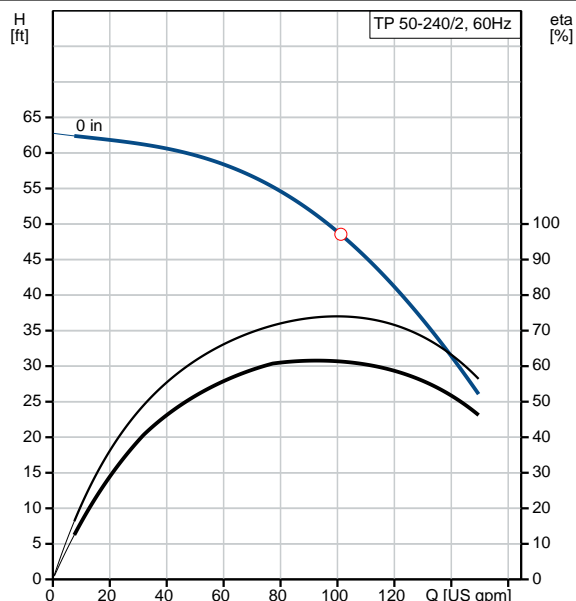
2/20/2018

| Position | Count | Description   |
|----------|-------|---|
|          |       | Rated current: 5,7-5,4/2,7 A<br>Starting current: 38,7-35/17,5 A<br>Cos phi - power factor: 93<br>Rated speed: 3450 rpm<br>Motor efficiency at full load: 78.5 %<br>Motor efficiency at 3/4 load: 85.0 %<br>Motor efficiency at 1/2 load: 83.0 %<br>Number of poles: 2<br>Insulation class (IEC 85): B<br><br><b>Others:</b><br>Net weight: 79.4 lb<br>Gross weight: 78 lb<br>Shipping volume: 2.33 ft³ |

## 96411819 TP 50-240/2 60 Hz



| Description                          | Value                        |
|--------------------------------------|------------------------------|
| <b>General information:</b>          |                              |
| Product name:                        | TP 50-240/2 A-G-A-BUBE       |
| Product No.:                         | 96411819                     |
| EAN:                                 | 5700390524999                |
| <b>Technical:</b>                    |                              |
| Speed for pump data:                 | 3490 rpm                     |
| Rated flow:                          | 101 US gpm                   |
| Rated head:                          | 48.56 ft                     |
| Head max:                            | 78.74 ft                     |
| Primary shaft seal:                  | BUBE                         |
| Approvals on motor nameplate:        | UL Recognized Component, CSA |
| Curve tolerance:                     | ISO9906:2012 3B              |
| Pump Number:                         | 96405267                     |
| Pump version:                        | A                            |
| <b>Materials:</b>                    |                              |
| Pump housing:                        | Cast iron                    |
|                                      | EN-JL1040                    |
|                                      | ASTM 25 B                    |
| Impeller:                            | Stainless steel              |
|                                      | DIN W.-Nr. 1.4301            |
|                                      | AISI 304                     |
| Material code:                       | A                            |
| <b>Installation:</b>                 |                              |
| Maximum ambient temperature:         | 104 °F                       |
| Maximum operating pressure:          | 145 psi                      |
| Flange standard:                     | USA                          |
| Connect code:                        | G                            |
| Pipe connection:                     | 2"                           |
| <b>Liquid:</b>                       |                              |
| Pumped liquid:                       | Water                        |
| Liquid temperature range:            | 5 .. 284 °F                  |
| Liquid temperature during operation: | 68 °F                        |
| Density:                             | 62.29 lb/ft³                 |
| <b>Electrical data:</b>              |                              |
| Motor type:                          | Baldor, TEFC                 |
| Rated power - P2:                    | 2 HP                         |
| KVA code:                            | H                            |
| Main frequency:                      | 60 Hz                        |
| Rated voltage:                       | 3 x 208-230/460 V            |
| Service factor:                      | 1,15                         |
| Rated current:                       | 5,7-5,4/2,7 A                |
| Starting current:                    | 38,7-35/17,5 A               |
| Load current:                        | 6,5-6,2/3,1 A                |
| Cos phi - power factor:              | 93                           |
| Rated speed:                         | 3450 rpm                     |
| Motor efficiency at full load:       | 78.5 %                       |
| Motor efficiency at 3/4 load:        | 85.0 %                       |
| Motor efficiency at 1/2 load:        | 83.0 %                       |
| Number of poles:                     | 2                            |
| Insulation class (IEC 85):           | B                            |
| Motor protection:                    | NONE                         |
| Motor Number:                        | 85900705                     |







Company name:

Created by:

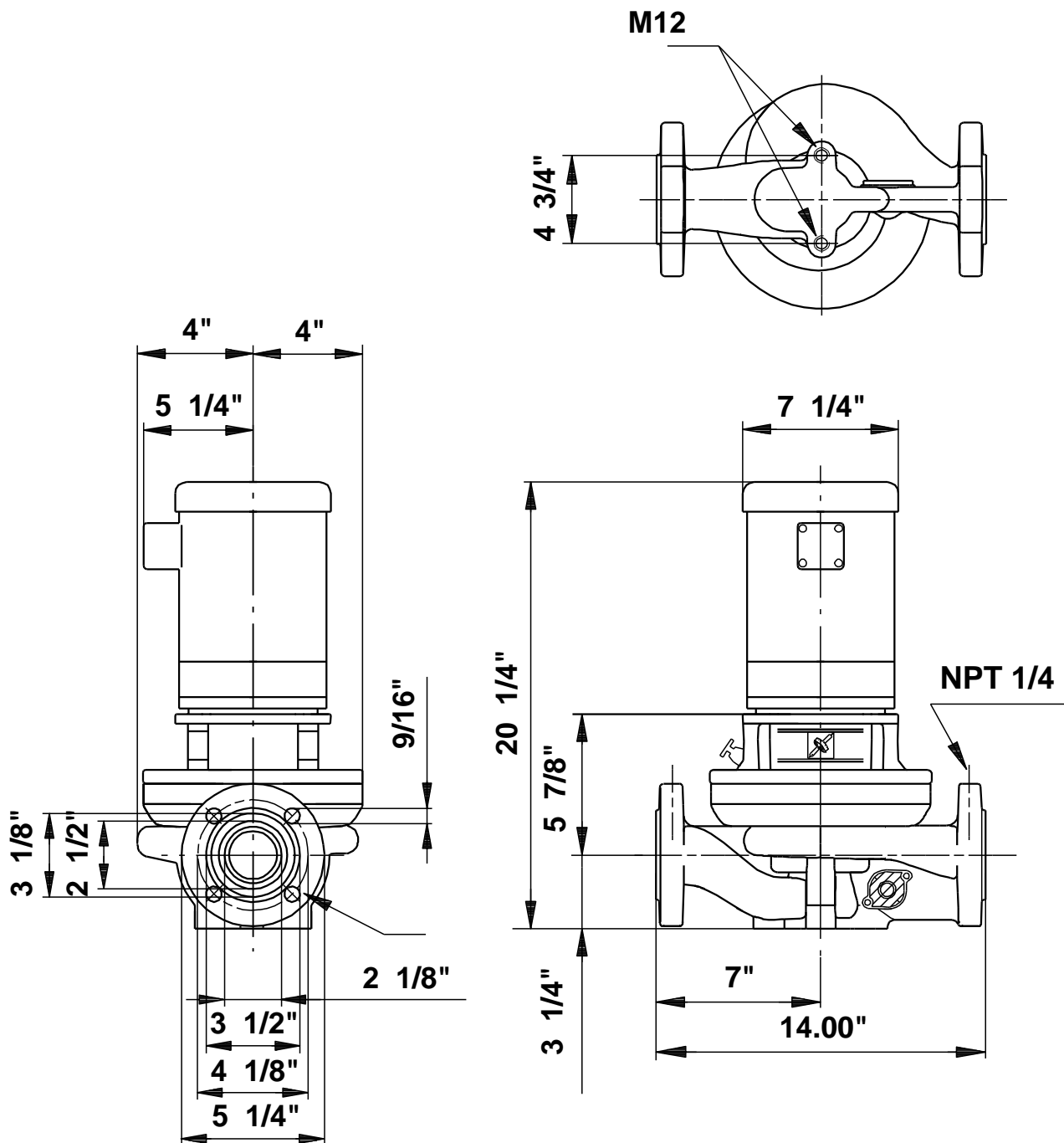
Phone:

Date:

2/20/2018


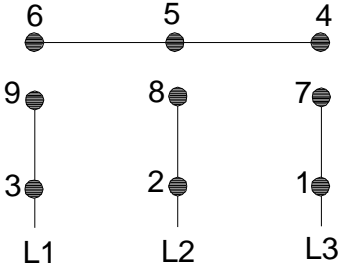
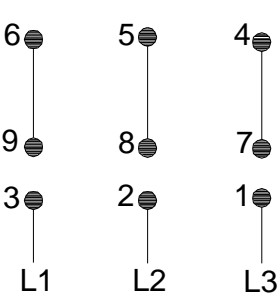


| Description      | Value                |
|------------------|----------------------|
| <b>Others:</b>   |                      |
| Net weight:      | 79.4 lb              |
| Gross weight:    | 78 lb                |
| Shipping volume: | 2.33 ft <sup>3</sup> |
| Country code:    | Namreg               |

## 96411819 TP 50-240/2 60 Hz



Note! All units are in [mm] unless otherwise stated.  
Disclaimer: This simplified dimensional drawing does not show all details.

## 96411819 TP 50-240/2 60 Hz

|  <b>WARNING</b>  |   |
|---|---|
| <p>MOTOR MUST BE GROUNDED IN ACCORDANCE WITH THE NATIONAL ELECTRICAL CODE AND LOCAL CODES BY TRAINED PERSONNEL TO PREVENT SERIOUS ELECTRICAL SHOCKS.</p> <p>TO SERVICE MOTOR, DISCONNECT POWER SOURCE FROM MOTOR AND ANY ACCESSORY DEVICES AND ALLOW MOTOR TO COME TO A COMPLETE STAND STILL.</p> |   |
| <p style="text-align: center;"><b>LOW VOLTAGE</b><br/>60Hz. 208-230V</p>   | <p style="text-align: center;"><b>HIGH VOLTAGE</b><br/>60Hz: 460V<br/>50Hz: 400V</p>  |
| <p>INTERCHANGE ANY TWO LINE WIRES TO REVERSE ROTATION</p>   |   |
| <p>THERMOSTAT LEADS (WHEN PROVIDED)  J  J</p>   |   |

96569464



Company name:

Created by:

Phone:

Date:

2/20/2018

---

**Order Data:**

Product name: TP 50-240/2 A-G-A-BUBE

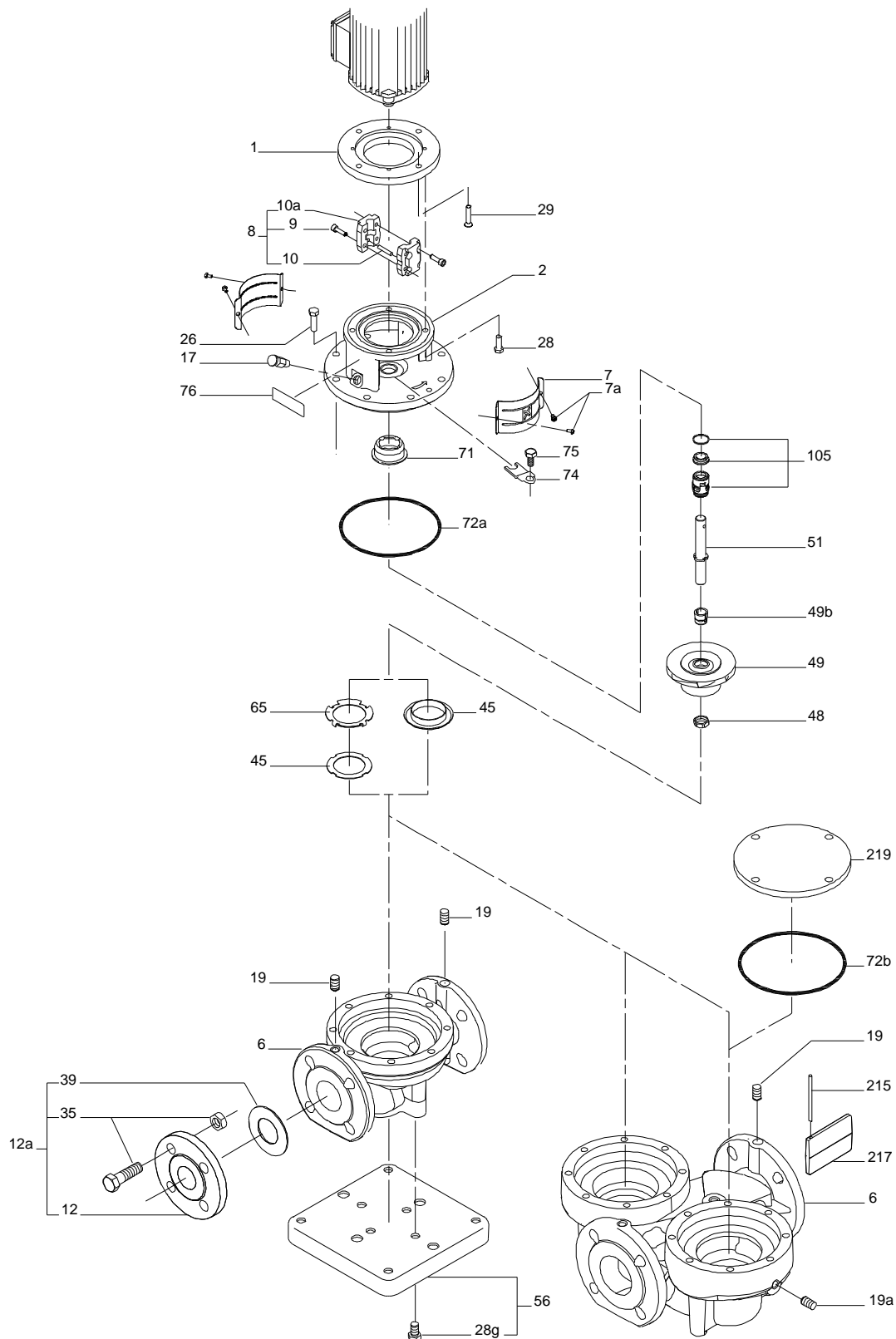
Amount: 1

Product No.: 96411819

Total: Price on request

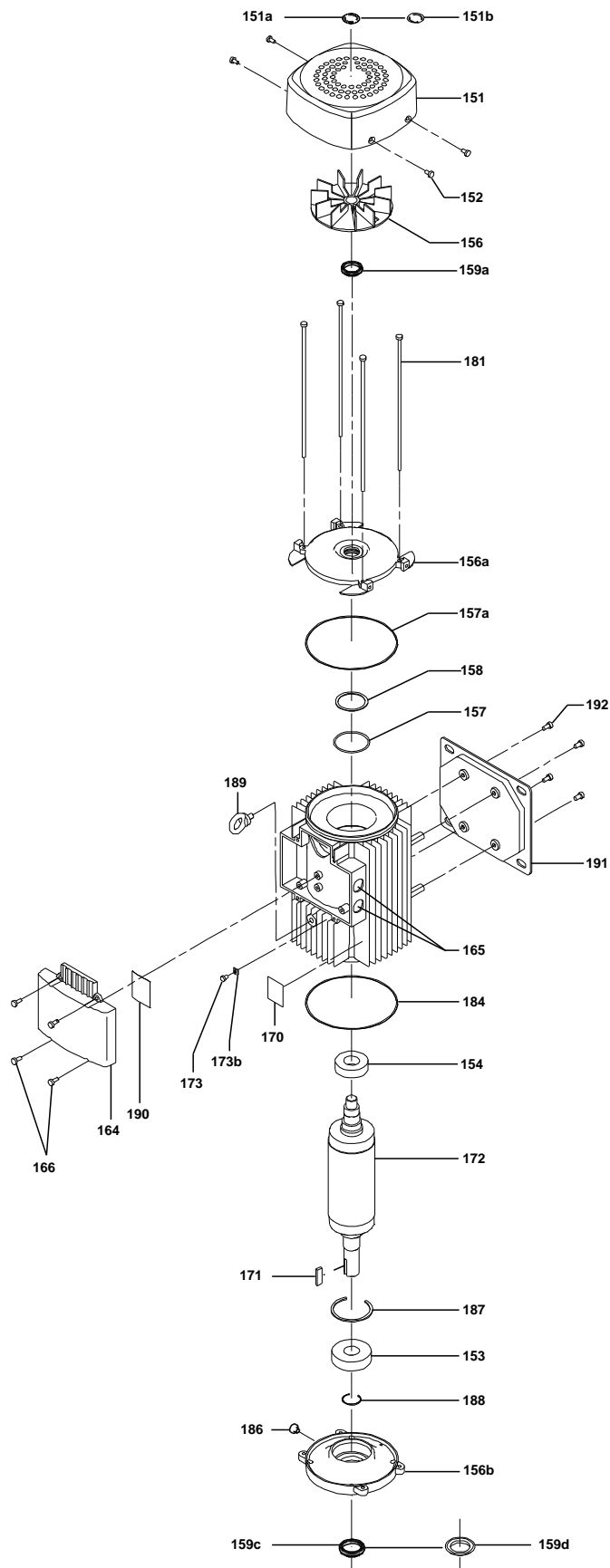
---

**Exploded view (tm009281 2201)**

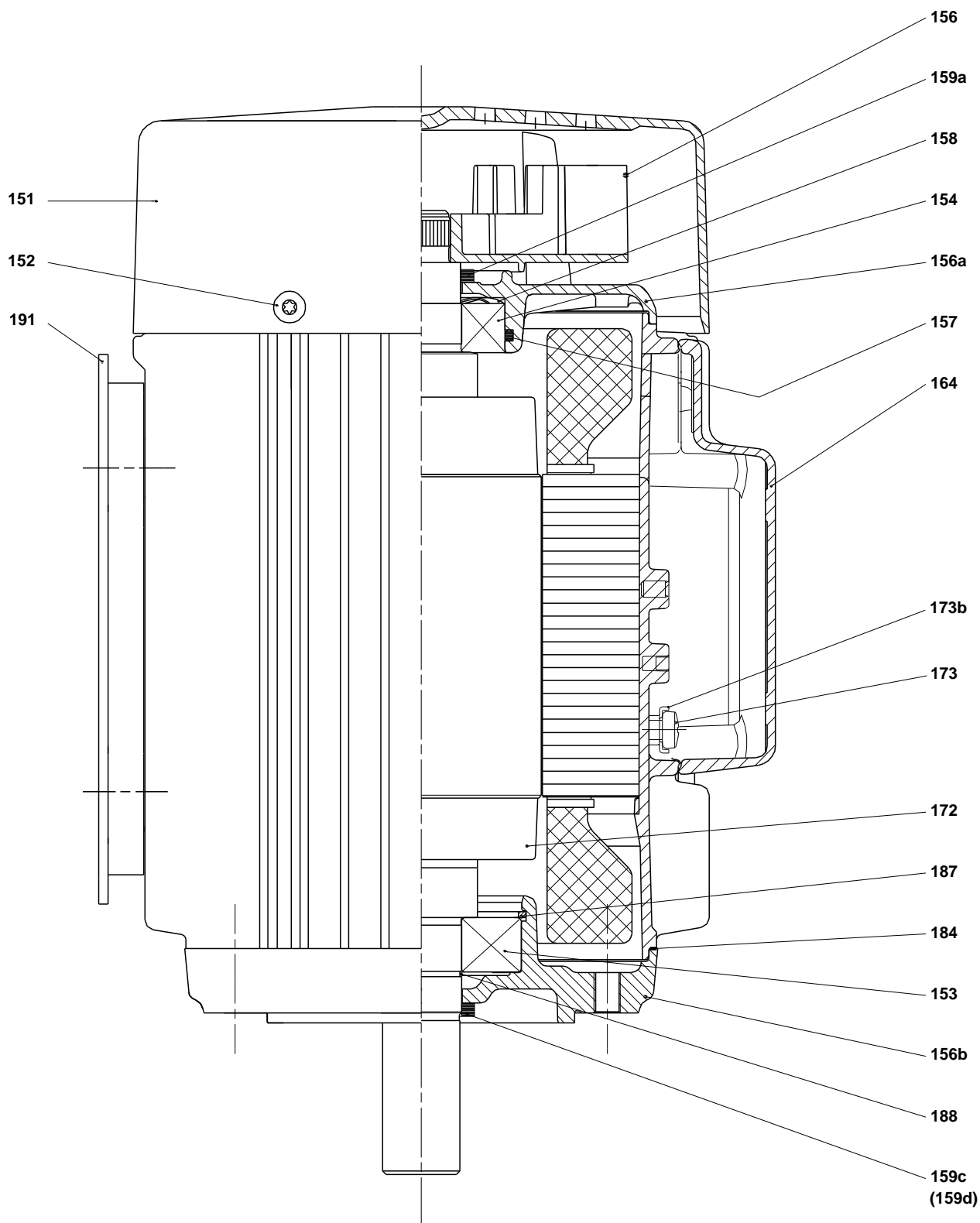


TM009281

## Exploded view (tm030553)



## Sectional drawing (TM031465)



**Parts list TP 50-240/2, Prod number 96411819**

**Valid from 8.11.2013 (1345)**

| Position | Description               | Annotation | Classification data  | Part No. | Count | Unit |
|----------|---------------------------|------------|----------------------|----------|-------|------|
| -        | Pump w/o motor            |            |                      |          | 1     | pcs  |
| 2        | Motor stool               |            |                      |          | 1     |      |
| 6        | Pump housing              |            |                      |          | 1     |      |
| 6        | Pump housing              |            |                      |          | 1     |      |
| 7        | Coupling guard            |            |                      |          | 2     |      |
| 7a       | Pan head screw            |            |                      |          | 4     |      |
| 9        | Hex socket head cap screw |            | Designation: DIN 912 |          | 4     |      |
|          |                           |            | Length: 20           |          |       |      |
|          |                           |            | Thread: M6           |          |       |      |
| 10       | Shaft pin                 |            | Diameter: 5          |          | 1     |      |
|          |                           |            | Length: 26           |          |       |      |
| 10a      | Coupling half             |            |                      |          | 2     |      |
| 17       | Air vent screw            |            |                      |          | 1     |      |
| 19       | Pipe plug                 |            |                      |          | 2     |      |
| 26       | Hex head screw            |            | Length: 28           |          | 8     |      |
|          |                           |            | Thread: M10          |          |       |      |
| 45       | Teflon ring               |            |                      |          | 1     |      |
| 49       | Impeller cpl.             |            |                      |          | 1     |      |
| 49b      | Split cone                |            |                      |          | 1     |      |
| 49b      | Split cone nut            |            |                      |          | 1     |      |
| 65       | Neck ring                 |            |                      |          | 1     |      |
| 72a      | O-ring                    |            | Diameter: 154        |          | 1     |      |
|          |                           |            | Material type: EPDM  |          |       |      |
|          |                           |            | Thickness: 4         |          |       |      |
| 76       | Nameplate                 |            |                      |          | 1     |      |
| 105      | Shaft seal                |            | Material type: EPDM  |          | 1     |      |
| +        | Motor                     |            |                      |          | 1     | pcs  |