

PROJECT: _____	UNIT TAG: _____	QUANTITY: _____
REPRESENTATIVE: _____	TYPE OF SERVICE: _____	DATE: _____
ENGINEER: _____	SUBMITTED BY: _____	DATE: _____
CONTRACTOR: _____	APPROVED BY: _____	DATE: _____
	ORDER NO.: _____	DATE: _____

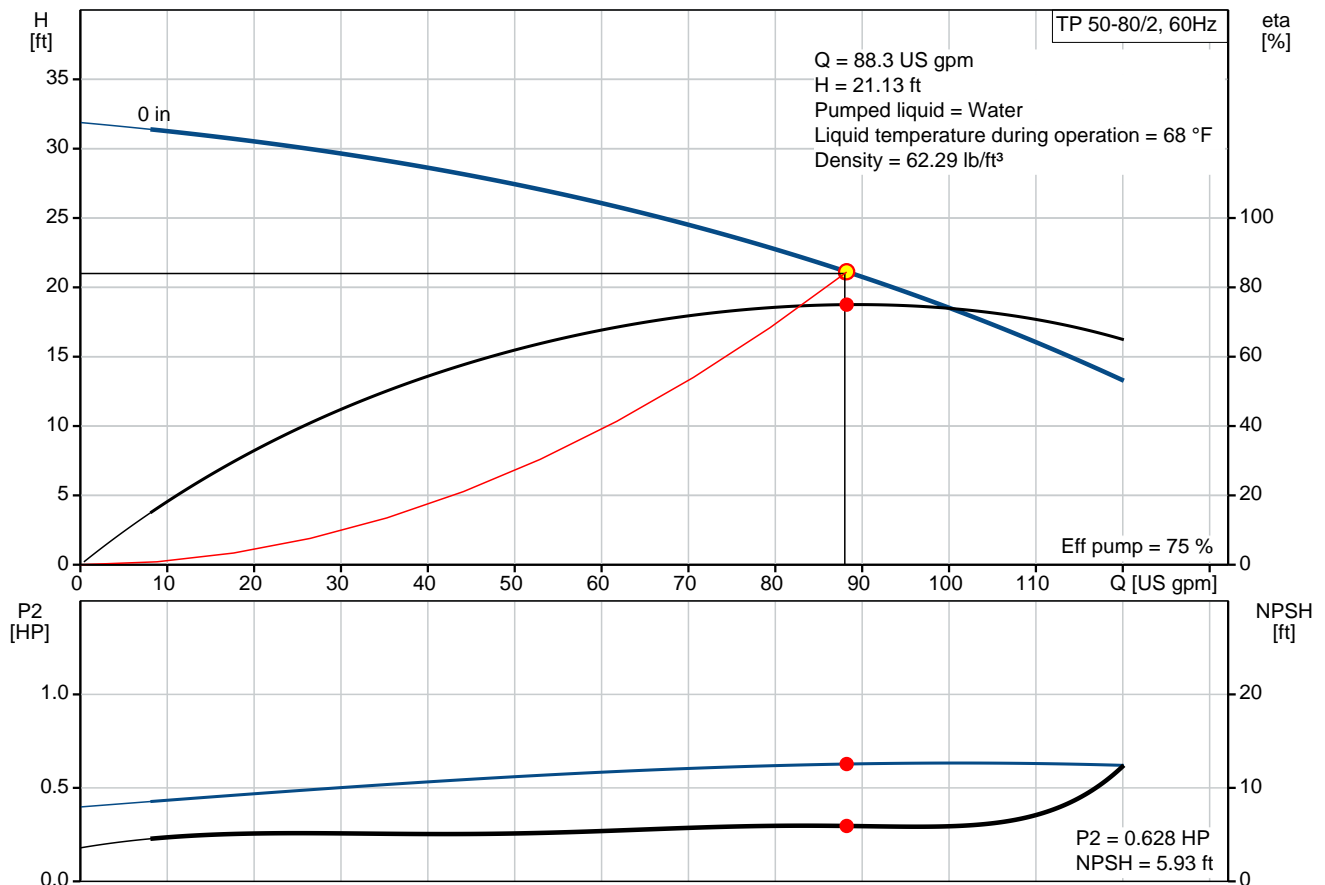


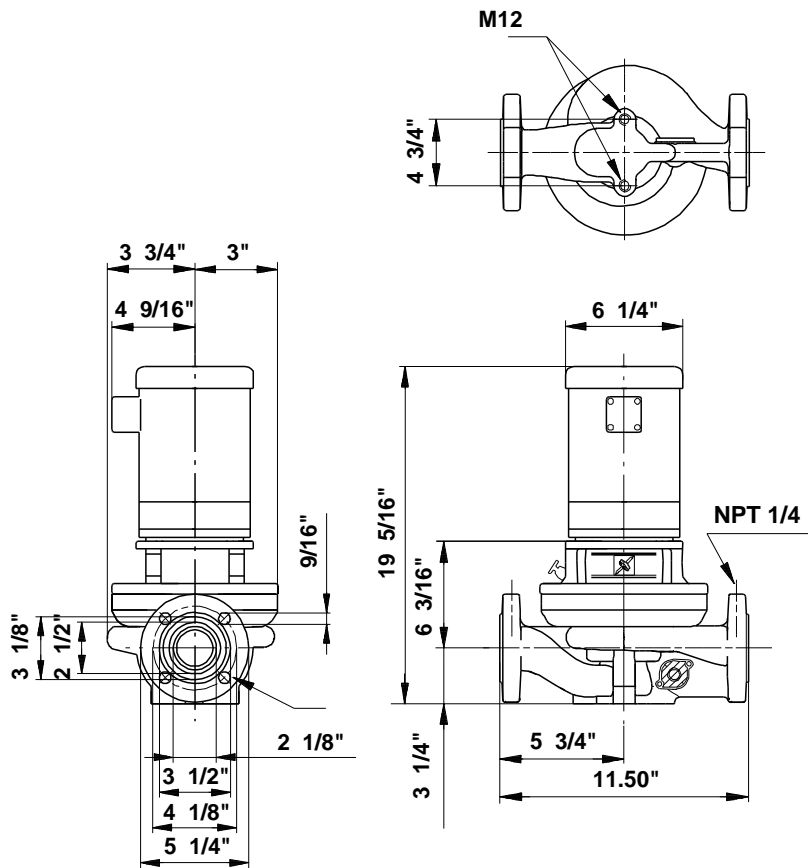
TP 50-80/2

Single-stage in-line pumps

Product photo could vary from the actual product

Conditions of Service		Pump Data		Motor Data	
Flow:	88.3 US gpm	Maximum operating pressure:	145 psi	Rated power - P2:	0.75 HP
Head:	21.13 ft	Liquid temperature range:	5 .. 284 °F	Rated voltage:	115/208-230 V
Efficiency:	_____	Maximum ambient temperature:	104 °F	Main frequency:	60 Hz
Liquid:	Water	Approvals motor:	UL Recognized Component, CSA	Number of poles:	2
Temperature:	68 °F	Shaft seal:	BUBE	Insulation class:	B
NPSH required:	1.81 m	Flange standard:	USA	Motor protection:	NONE
Viscosity:	_____	Pipe connection:	2"	Motor type:	Baldor, TEFC
Specific Gravity:	1.000	Product number:	96411810	Motor_efficiency:	66 %





Materials:

Pump housing: Cast iron
 EN-JL1040
 ASTM 25 B

Impeller: Stainless steel
 DIN W.-Nr. 1.4301
 AISI 304

Material code: A

Tender Text



Product No.: [96411810](#)

TP 50-80/2 A-G-A-BUBE

Single-stage centrifugal volute in-line single-head pump:

- neck rings and impeller made of stainless steel
- cataphoresis treatment
- shell coupling
- top-pull-out principle for easy maintenance
- optimized hydraulics
- in-line design with opposite suction and discharge ports enabling mounting in pipework or on a concrete foundation
- corrosion resistant maintenance-free mechanical shaft seal.

The motor is a 1-phase AC motor.

Liquid:

Pumped liquid: Water
Liquid temperature range: 5 .. 284 °F
Liquid temperature during operation: 68 °F
Density: 62.29 lb/ft³

Technical:

Speed for pump data: 3480 rpm
Actual calculated flow: 88.3 US gpm
Resulting head of the pump: 21.13 ft
Primary shaft seal: BUBE
Approvals on motor nameplate: UL Recognized Component, CSA
Curve tolerance: ISO9906:2012 3B

Materials:

Pump housing: Cast iron
EN-JL1040
ASTM 25 B
Impeller: Stainless steel
DIN W.-Nr. 1.4301
AISI 304

Installation:

Maximum ambient temperature: 104 °F
Maximum operating pressure: 145 psi
Flange standard: USA
Pipe connection: 2"

Electrical data:

Motor type: Baldor, TEFC
Rated power - P2: 0.75 HP
Main frequency: 60 Hz
Rated voltage: 1 x 115/208-230 V



Company name:

Created by:

Phone:


Date:

2/20/2018

Service factor: 1,25
Rated current: 9,6/5-4,8 A
Starting current: 56/31-28 A
Cos phi - power factor: 74
Rated speed: 3450 rpm
Motor efficiency at full load: 66 %
Number of poles: 2
Insulation class (IEC 85): B

Others:

Net weight: 71.2 lb
Gross weight: 64 lb
Shipping volume: 1.98 ft³

Position	Count	Description
	1	<p>TP 50-80/2 A-G-A-BUBE</p>  <p>Product No.: 96411810</p> <p>Single-stage centrifugal volute in-line single-head pump:</p> <ul style="list-style-type: none"> - neck rings and impeller made of stainless steel - cataphoresis treatment - shell coupling - top-pull-out principle for easy maintenance - optimized hydraulics - in-line design with opposite suction and discharge ports enabling mounting in pipework or on a concrete foundation - corrosion resistant maintenance-free mechanical shaft seal. <p>The motor is a 1-phase AC motor.</p> <p>Liquid:</p> <p>Pumped liquid: Water</p> <p>Liquid temperature range: 5 .. 284 °F</p> <p>Liquid temperature during operation: 68 °F</p> <p>Density: 62.29 lb/ft³</p> <p>Technical:</p> <p>Speed for pump data: 3480 rpm</p> <p>Actual calculated flow: 88.3 US gpm</p> <p>Resulting head of the pump: 21.13 ft</p> <p>Primary shaft seal: BUBE</p> <p>Approvals on motor nameplate: UL Recognized Component, CSA</p> <p>Curve tolerance: ISO9906:2012 3B</p> <p>Materials:</p> <p>Pump housing: Cast iron EN-JL1040 ASTM 25 B</p> <p>Impeller: Stainless steel DIN W.-Nr. 1.4301 AISI 304</p> <p>Installation:</p> <p>Maximum ambient temperature: 104 °F</p> <p>Maximum operating pressure: 145 psi</p> <p>Flange standard: USA</p> <p>Pipe connection: 2"</p> <p>Electrical data:</p> <p>Motor type: Baldor, TEFC</p> <p>Rated power - P2: 0.75 HP</p> <p>Main frequency: 60 Hz</p> <p>Rated voltage: 1 x 115/208-230 V</p> <p>Service factor: 1,25</p>



Company name:

Created by:

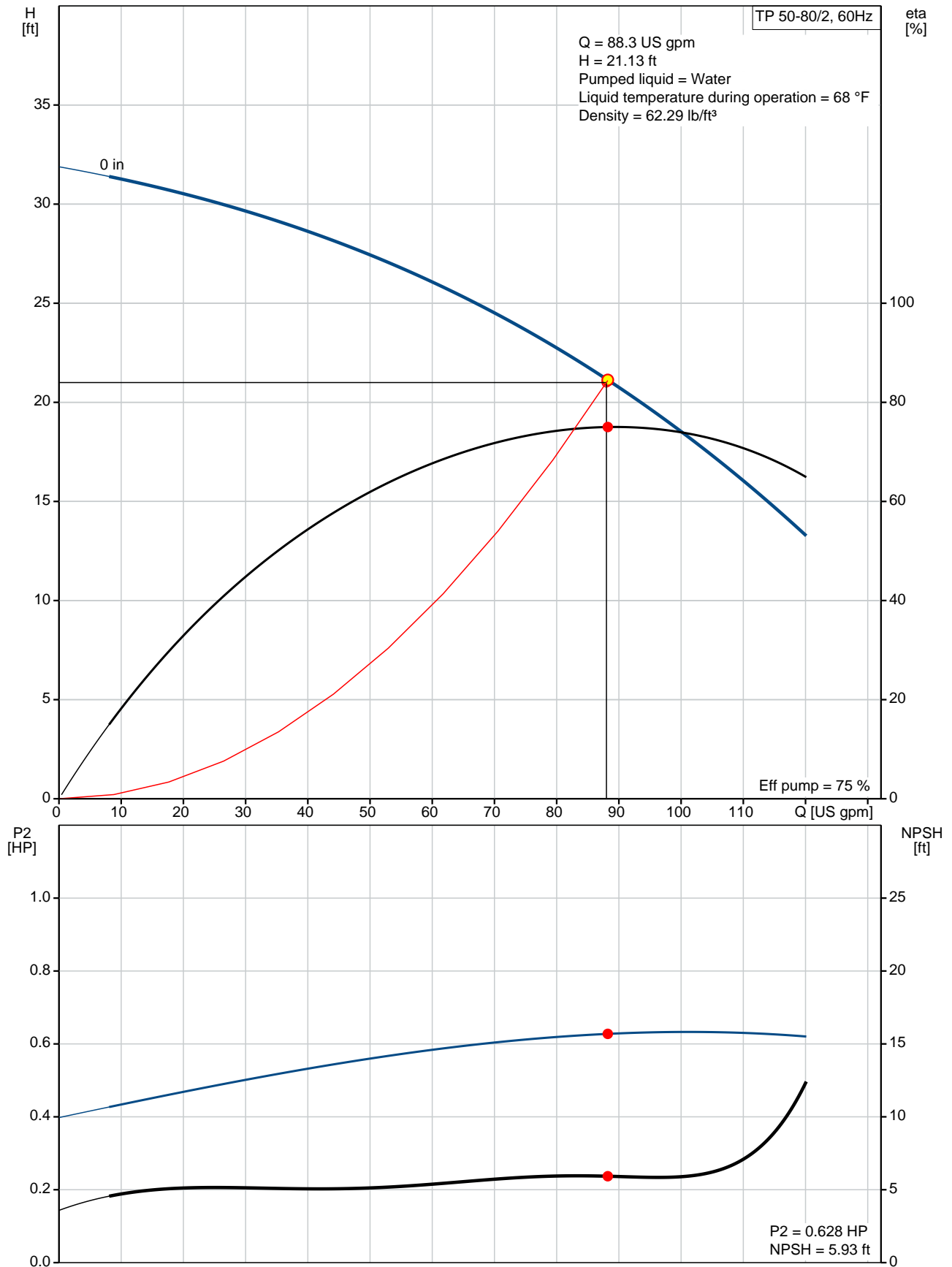
Phone:

Date:

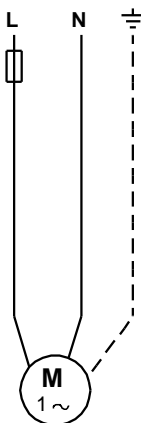
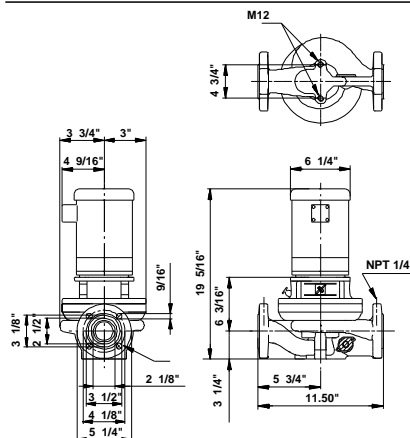
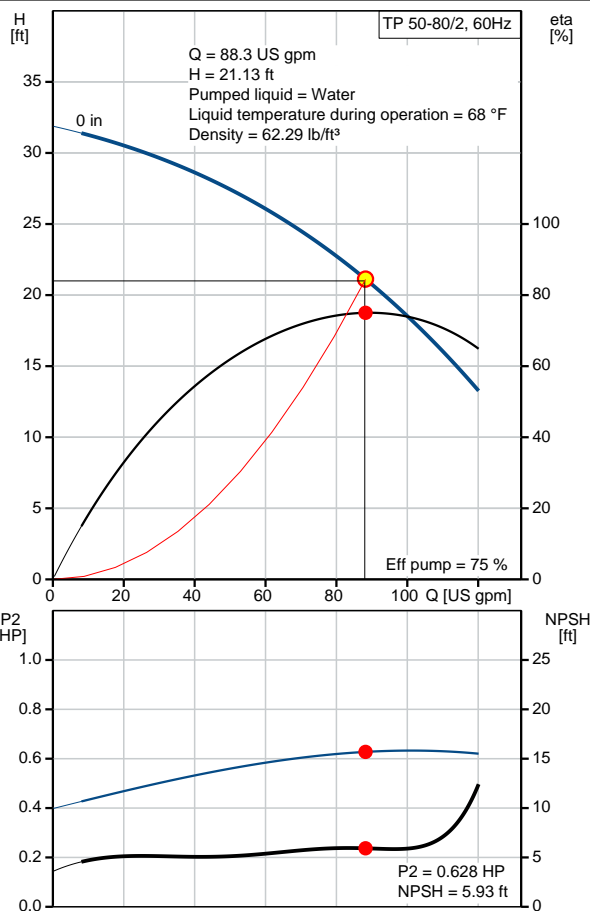
2/20/2018

Position	Count	Description
		Rated current: 9,6/5-4,8 A Starting current: 56/31-28 A Cos phi - power factor: 74 Rated speed: 3450 rpm Motor efficiency at full load: 66 % Number of poles: 2 Insulation class (IEC 85): B Others: Net weight: 71.2 lb Gross weight: 64 lb Shipping volume: 1.98 ft³

96411810 TP 50-80/2 60 Hz



Description	Value
General information:	
Product name:	TP 50-80/2 A-G-A-BUBE
Product No.:	96411810
EAN:	5700390524623
Technical:	
Speed for pump data:	3480 rpm
Actual calculated flow:	88.3 US gpm
Resulting head of the pump:	21.13 ft
Head max:	26.25 ft
Primary shaft seal:	BUBE
Approvals on motor nameplate:	UL Recognized Component, CSA
Curve tolerance:	ISO9906:2012 3B
Pump Number:	96405263
Pump version:	A
Materials:	
Pump housing:	Cast iron
	EN-JL1040
	ASTM 25 B
Impeller:	Stainless steel
	DIN W.-Nr. 1.4301
	AISI 304
Material code:	A
Installation:	
Maximum ambient temperature:	104 °F
Maximum operating pressure:	145 psi
Flange standard:	USA
Connect code:	G
Pipe connection:	2"
Liquid:	
Pumped liquid:	Water
Liquid temperature range:	5 .. 284 °F
Liquid temperature during operation:	68 °F
Density:	62.29 lb/ft³
Electrical data:	
Motor type:	Baldor, TEFC
Rated power - P2:	0.75 HP
KVA code:	K
Main frequency:	60 Hz
Rated voltage:	1 x 115/208-230 V
Service factor:	1,25
Rated current:	9,6/5-4,8 A
Starting current:	56/31-28 A
Load current:	11,4/6-5,7 A
Cos phi - power factor:	74
Rated speed:	3450 rpm
Motor efficiency at full load:	66 %
Number of poles:	2
Insulation class (IEC 85):	B
Motor protection:	NONE
Motor Number:	84Z04001
Others:	
Net weight:	71.2 lb





Company name:

Created by:

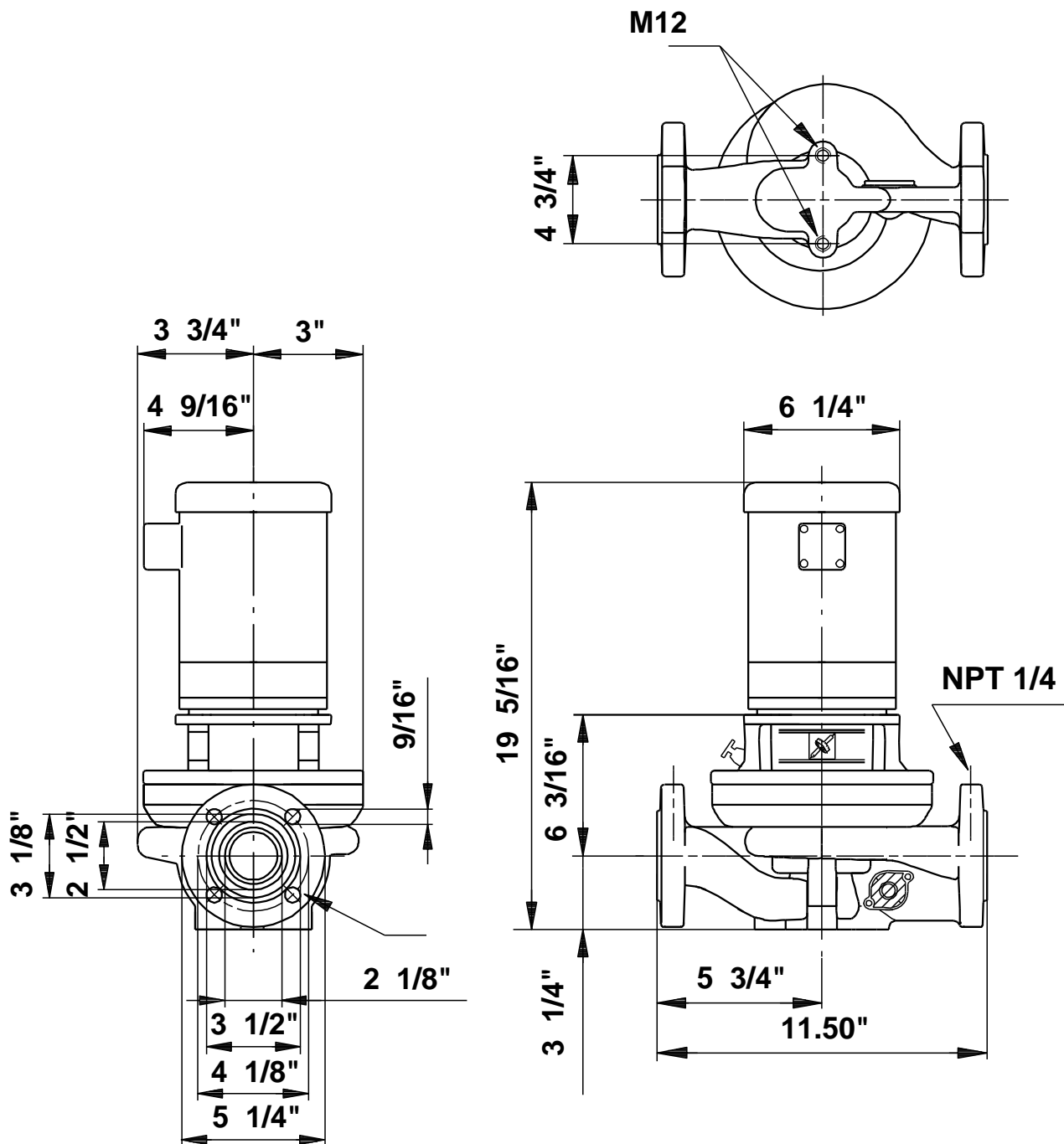
Phone:

Date:

2/20/2018

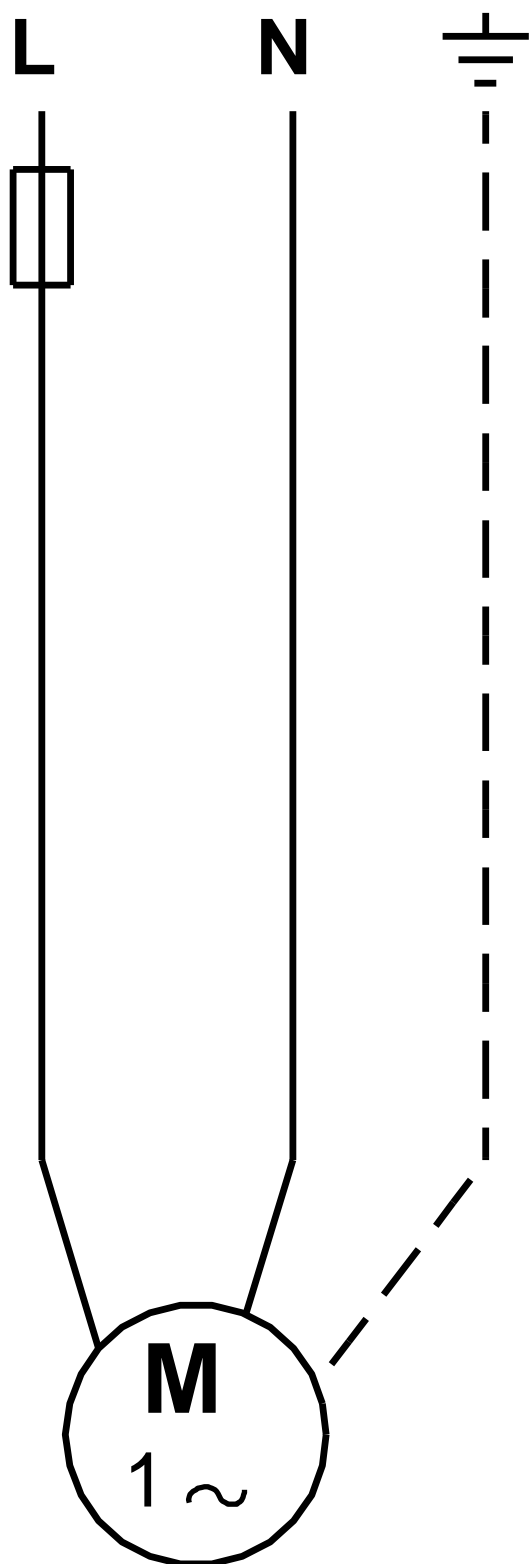
Description	Value
Gross weight:	64 lb
Shipping volume:	1.98 ft³
Country code:	Namreg

96411810 TP 50-80/2 60 Hz



Note! All units are in [mm] unless otherwise stated.
Disclaimer: This simplified dimensional drawing does not show all details.

96411810 TP 50-80/2 60 Hz



All units are [mm] unless otherwise presented.



Company name:

Created by:

Phone:

Date:

2/20/2018

Order Data:

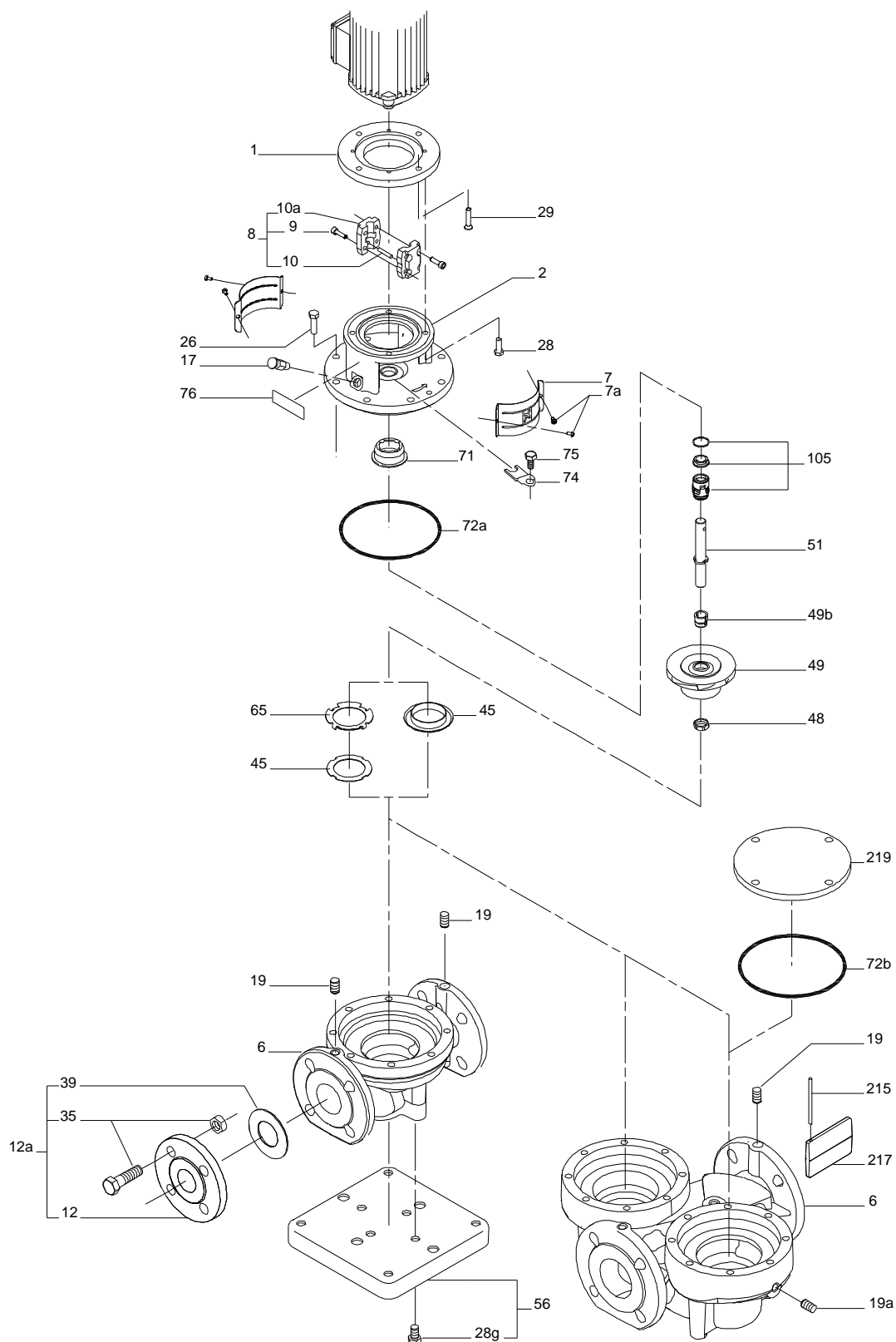
Product name: TP 50-80/2 A-G-A-BUBE

Amount: 1

Product No.: 96411810

Total: Price on request

Exploded view (tm009281 2201)



Parts list TP 50-80/2, Prod number 96411810

Valid from 8.11.2013 (1345)

Position	Description	Annotation	Classification data	Part No.	Count	Unit
	Motor				1	pcs
-	Pump				1	pcs
2	Motor stool				1	
6	Pump housing				1	
6	Pump housing				1	
7	Coupling guard				2	
7a	Pan head screw				4	
9	Hex socket head cap screw		Designation: DIN 912		4	
			Length: 20			
			Thread: M6			
10	Shaft pin		Diameter: 5		1	
			Length: 26			
10a	Coupling half				2	
17	Air vent screw				1	
19	Pipe plug				2	
26	Hex head screw		Length: 28		8	
			Thread: M10			
45	Teflon ring				1	
48	Split cone nut				1	
49	Impeller cpl.				1	
49b	Split cone				1	
65	Neck ring				1	
72a	O-ring				1	
76	Nameplate				1	
105	Shaft seal		Material type: EPDM		1	