

PROJECT: _____	UNIT TAG: _____	QUANTITY: _____
REPRESENTATIVE: _____	TYPE OF SERVICE: _____	DATE: _____
ENGINEER: _____	SUBMITTED BY: _____	DATE: _____
CONTRACTOR: _____	APPROVED BY: _____	DATE: _____
	ORDER NO.: _____	DATE: _____

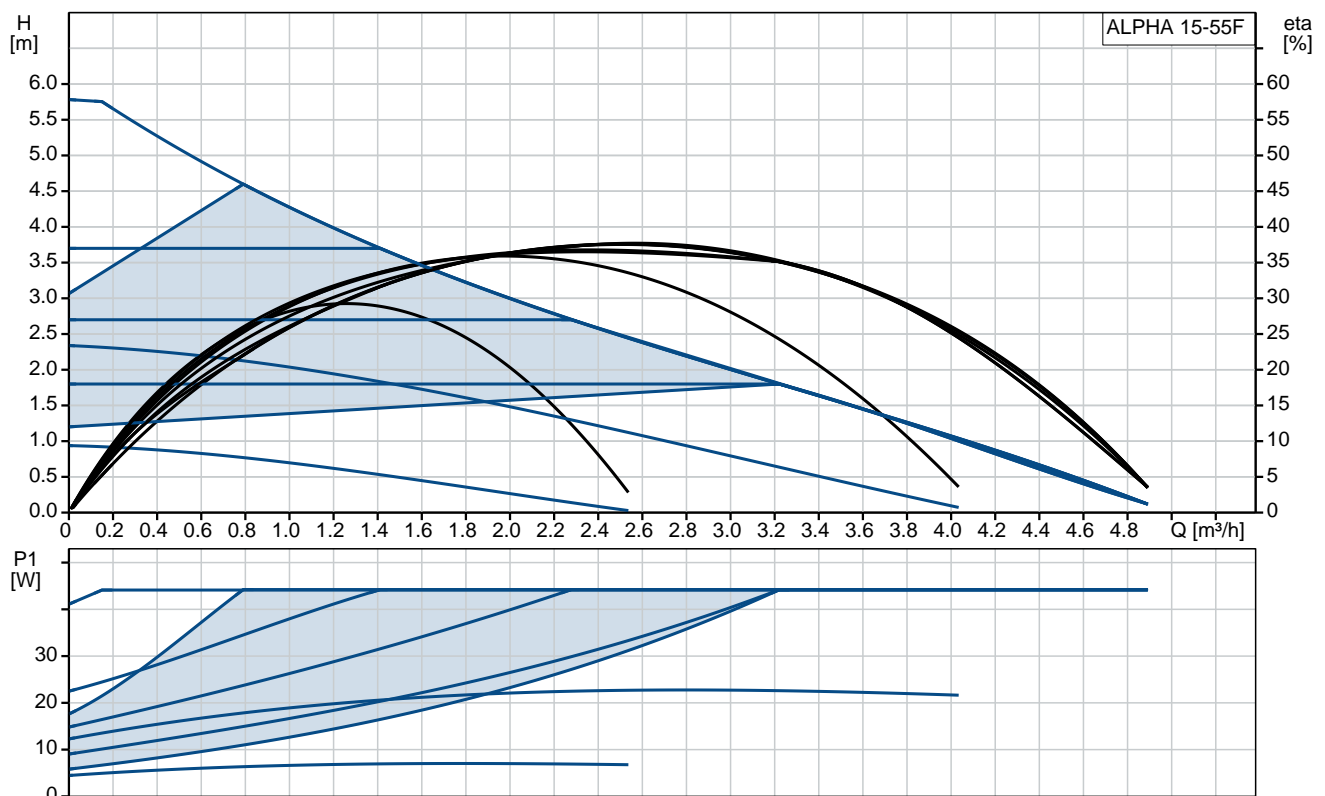
### ALPHA 15-55F

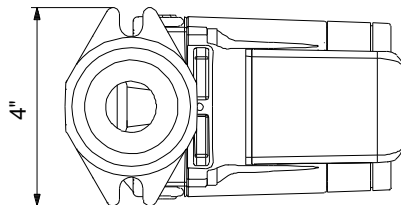
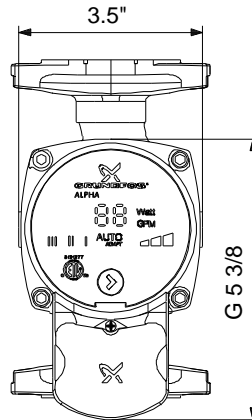
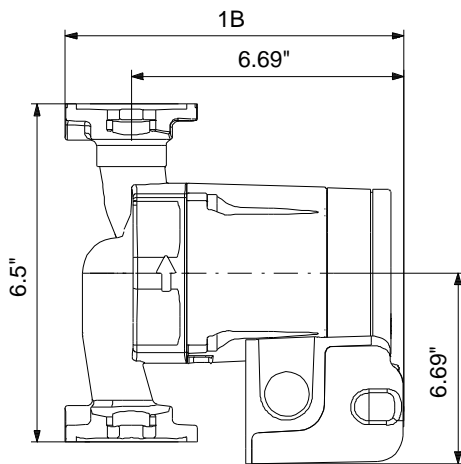
Electronically controlled circulator pumps for domestic building



Note! Product picture may differ from actual product

Conditions of Service	Pump Data	Motor Data
Flow: _____	Maximum operating pressure: 10 bar	P1 max: 5 .. 45 W
Head: _____	Liquid temperature range: 2 .. 110 °C	Rated voltage: 115 V
Efficiency: _____	Maximum ambient temperature: 40 °C	Mains frequency: 60 Hz
Liquid: Water	Approvals: ETL, FCC	Enclosure class: IP42
Temperature: 60 °C	Pipe connection: G 1 1/2	Insulation class: F
NPSH required: m	Product number: On request	Motor protection: NONE
Viscosity: _____		Thermal protection: ELEC
Specific Gravity: 0.985		





**Materials:**

Pump housing: Cast iron  
DIN W.-Nr. GG15  
ASTM 30 B

Impeller: Composite, PES

## Tender Text



Note! Product picture may differ from actual product

Product No.: On request

**ALPHA 15-55F**

### GRUNDFOS ALPHA

The next generation of energy efficient circulators.

ALPHA is the latest and most innovative member of the Grundfos family of high-quality circulators. By incorporating a permanent magnet motor design, power consumption is now reduced by 50%. ALPHA adapts to the seasonal demands of your system without sacrificing comfort.

With ALPHA, you can stop worrying about complicated pump settings. Simply install the pump and leave it in the factory setting, AUTOADAPT™. ALPHA will automatically analyze the heating system, find the optimum setting and continue to adjust its operation to changes in demand. The result is optimum comfort and minimum energy consumption.

### AUTOADAPT

The factory setting, AUTOADAPT, analyses the heating system and automatically adjusts the pump setting to meet changes in heating demand.

Ensuring lowest possible energy consumption, while maintaining maximum comfort levels.

### Compact design

The innovative design makes ALPHA the most compact Grundfos circulator available. With the electronics integrated into the motor housing and standard 2-Bolt flange connection, confined spaces and challenging applications are now possible.

### Two options for power connections

Option 1: 6-foot line cord with three prong plug

Option 2: Conduit terminal box with push pin wire connection

### One-touch operation

Intuitive one-touch operation for selecting seven different hydraulic settings.

3 Fixed Speeds

3 Constant Pressure settings

AUTOADAPT

### LED Display

The easy-to-read LED display indicating power (Watts) consumption and flow (GPM) estimation.

### Liquid:

Pumped liquid: Water

Liquid temperature range: 2 .. 110 °C

Liquid temperature during operation: 60 °C

Density: 983.2 kg/m³

### Technical:

TF class: 110  
Approvals on nameplate: ETL, FCC

**Materials:**

Pump housing: Cast iron  
DIN W.-Nr. GG15  
ASTM 30 B  
Impeller: Composite, PES

**Installation:**

Range of ambient temperature: 0 .. 40 °C  
Maximum operating pressure: 10 bar  
Pipe connection: G 1 1/2  
Pressure rating: PN 10  
Port-to-port length: 165 mm

**Electrical data:**

Power input - P1: 5 .. 45 W  
Mains frequency: 60 Hz  
Rated voltage: 1 x 115 V  
Maximum current consumption: 0.1 .. 0.65 A  
Enclosure class (IEC 34-5): IP42  
Insulation class (IEC 85): F

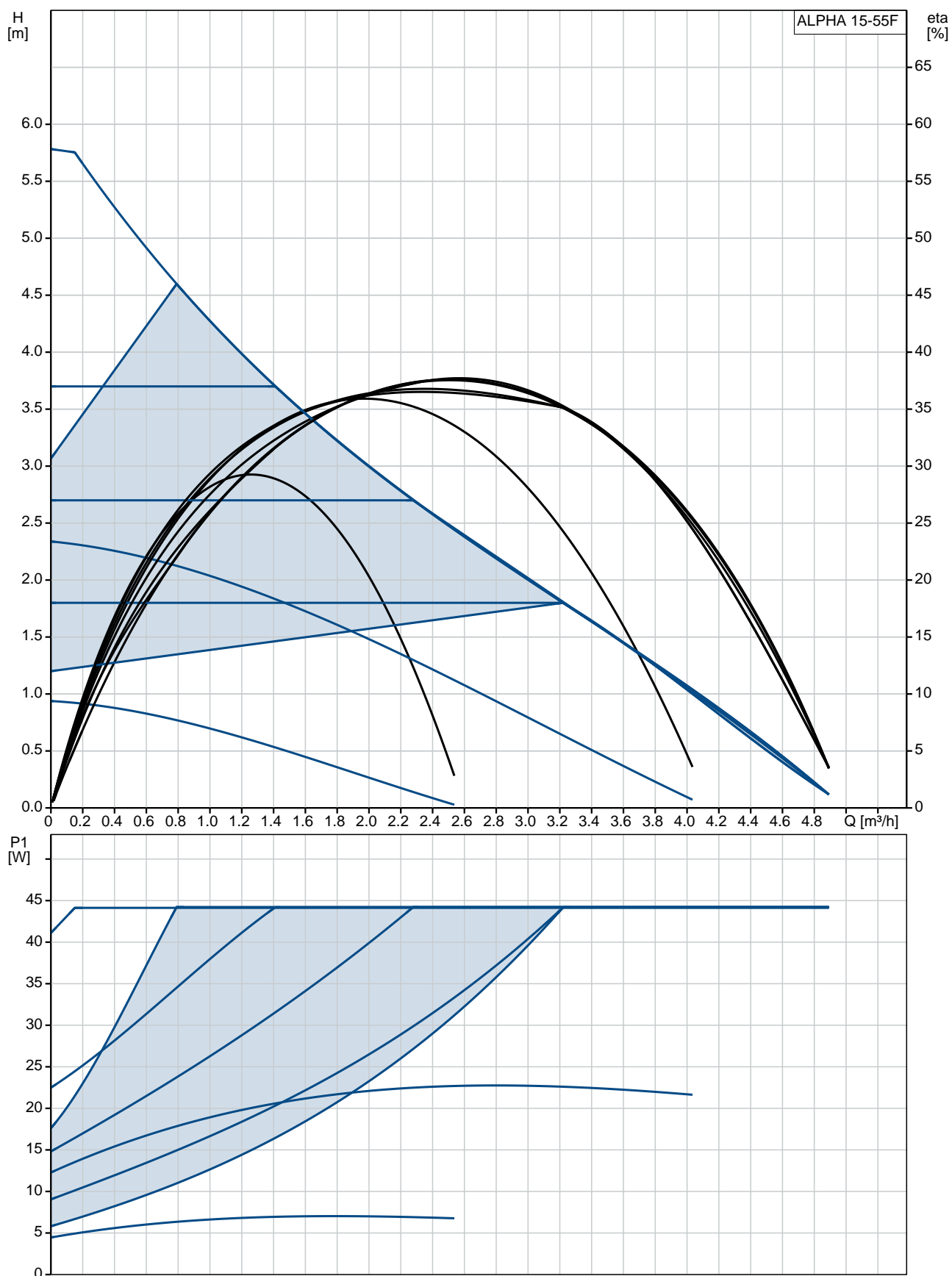
**Others:**

Gross weight: 3.4 kg

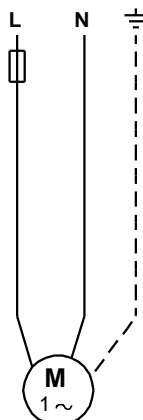
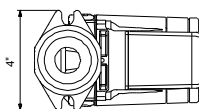
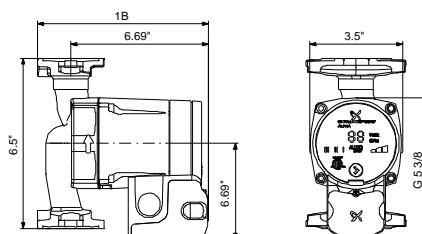
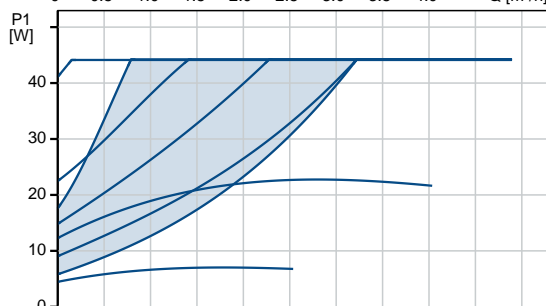
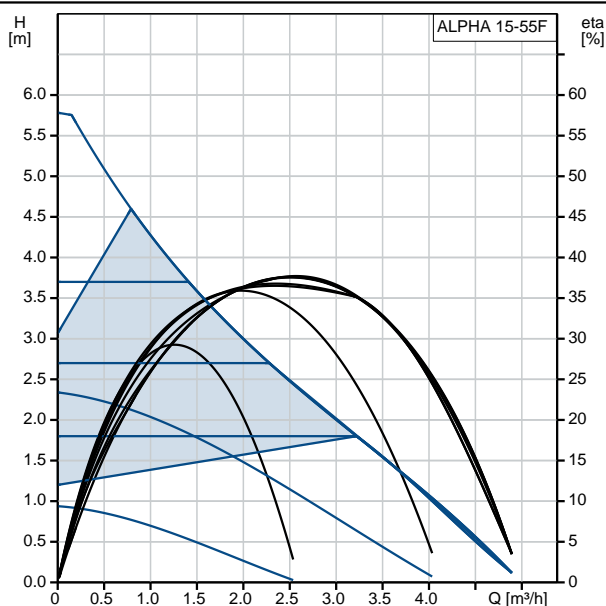
Position	Qty.	Description
	1	<p><b>ALPHA 15-55F</b></p>  <p><b>Note! Product picture may differ from actual product</b></p> <p>Product No.: On request</p> <p><b>GRUNDFOS ALPHA</b> The next generation of energy efficient circulators.</p> <p>ALPHA is the latest and most innovative member of the Grundfos family of high-quality circulators. By incorporating a permanent magnet motor design, power consumption is now reduced by 50%. ALPHA adapts to the seasonal demands of your system without sacrificing comfort.</p> <p>With ALPHA, you can stop worrying about complicated pump settings. Simply install the pump and leave it in the factory setting, AUTOADAPTTM. ALPHA will automatically analyze the heating system, find the optimum setting and continue to adjust its operation to changes in demand. The result is optimum comfort and minimum energy consumption.</p> <p><b>AUTOADAPT</b> The factory setting, AUTOADAPT, analyses the heating system and automatically adjusts the pump setting to meet changes in heating demand. Ensuring lowest possible energy consumption, while maintaining maximum comfort levels.</p> <p><b>Compact design</b> The innovative design makes ALPHA the most compact Grundfos circulator available. With the electronics integrated into the motor housing and standard 2-Bolt flange connection, confined spaces and challenging applications are now possible.</p> <p><b>Two options for power connections</b> Option 1: 6-foot line cord with three prong plug Option 2: Conduit terminal box with push pin wire connection</p> <p><b>One-touch operation</b> Intuitive one-touch operation for selecting seven different hydraulic settings. 3 Fixed Speeds 3 Constant Pressure settings AUTOADAPT</p> <p><b>LED Display</b> The easy-to-read LED display indicating power (Watts) consumption and flow (GPM) estimation.</p> <p><b>Liquid:</b> Pumped liquid: Water Liquid temperature range: 2 .. 110 °C Liquid temperature during operation: 60 °C Density: 983.2 kg/m³</p> <p><b>Technical:</b></p>

Position	Qty.	Description
		<p>TF class: 110</p> <p>Approvals on nameplate: ETL, FCC</p> <p><b>Materials:</b></p> <p>Pump housing: Cast iron DIN W.-Nr. GG15 ASTM 30 B</p> <p>Impeller: Composite, PES</p> <p><b>Installation:</b></p> <p>Range of ambient temperature: 0 .. 40 °C</p> <p>Maximum operating pressure: 10 bar</p> <p>Pipe connection: G 1 1/2</p> <p>Pressure rating: PN 10</p> <p>Port-to-port length: 165 mm</p> <p><b>Electrical data:</b></p> <p>Power input - P1: 5 .. 45 W</p> <p>Mains frequency: 60 Hz</p> <p>Rated voltage: 1 x 115 V</p> <p>Maximum current consumption: 0.1 .. 0.65 A</p> <p>Enclosure class (IEC 34-5): IP42</p> <p>Insulation class (IEC 85): F</p> <p><b>Others:</b></p> <p>Gross weight: 3.4 kg</p>

## On request ALPHA 15-55F 60 Hz

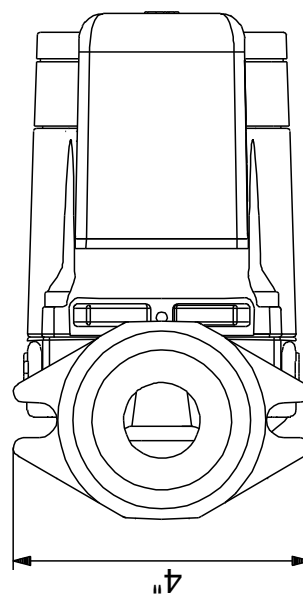
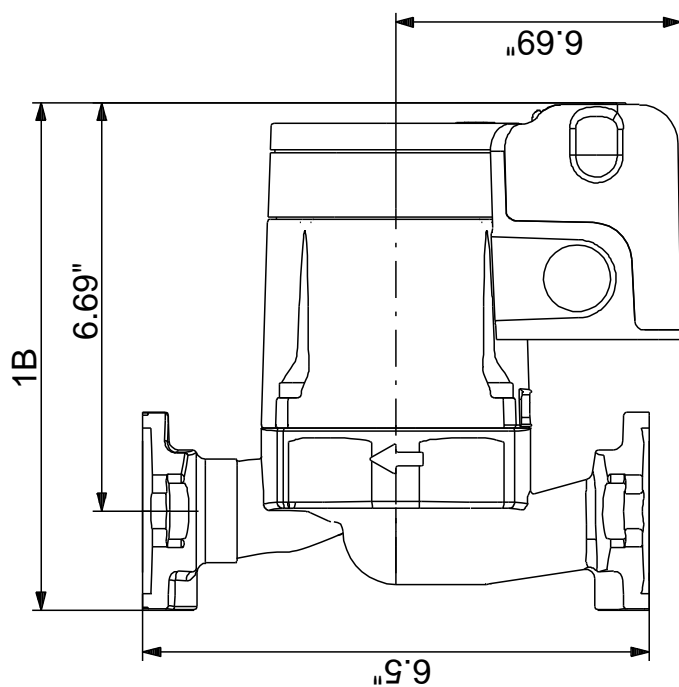
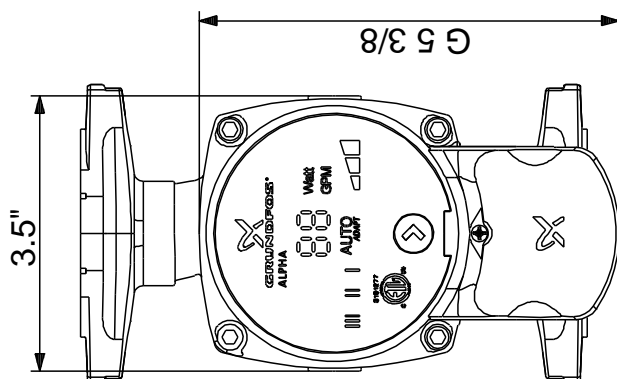


Description	Value
<b>General information:</b>	
Product name:	ALPHA 15-55F
Product No:	On request
EAN number:	On request
<b>Technical:</b>	
Head max:	55 dm
TF class:	110
Approvals on nameplate:	ETL, FCC
<b>Materials:</b>	
Pump housing:	Cast iron
	DIN W.-Nr. GG15
	ASTM 30 B
Impeller:	Composite, PES
<b>Installation:</b>	
Range of ambient temperature:	0 .. 40 °C
Maximum operating pressure:	10 bar
Pipe connection:	G 1 1/2
Pressure rating:	PN 10
Port-to-port length:	165 mm
<b>Liquid:</b>	
Pumped liquid:	Water
Liquid temperature range:	2 .. 110 °C
Liquid temperature during operation:	60 °C
Density:	983.2 kg/m³
<b>Electrical data:</b>	
Power input - P1:	5 .. 45 W
Mains frequency:	60 Hz
Rated voltage:	1 x 115 V
Maximum current consumption:	0.1 .. 0.65 A
Enclosure class (IEC 34-5):	IP42
Insulation class (IEC 85):	F
Motor protec:	NONE
Thermal protec:	ELEC
<b>Controls:</b>	
Pos term box:	6H
<b>Others:</b>	
Gross weight:	3.4 kg
Sales region:	USA



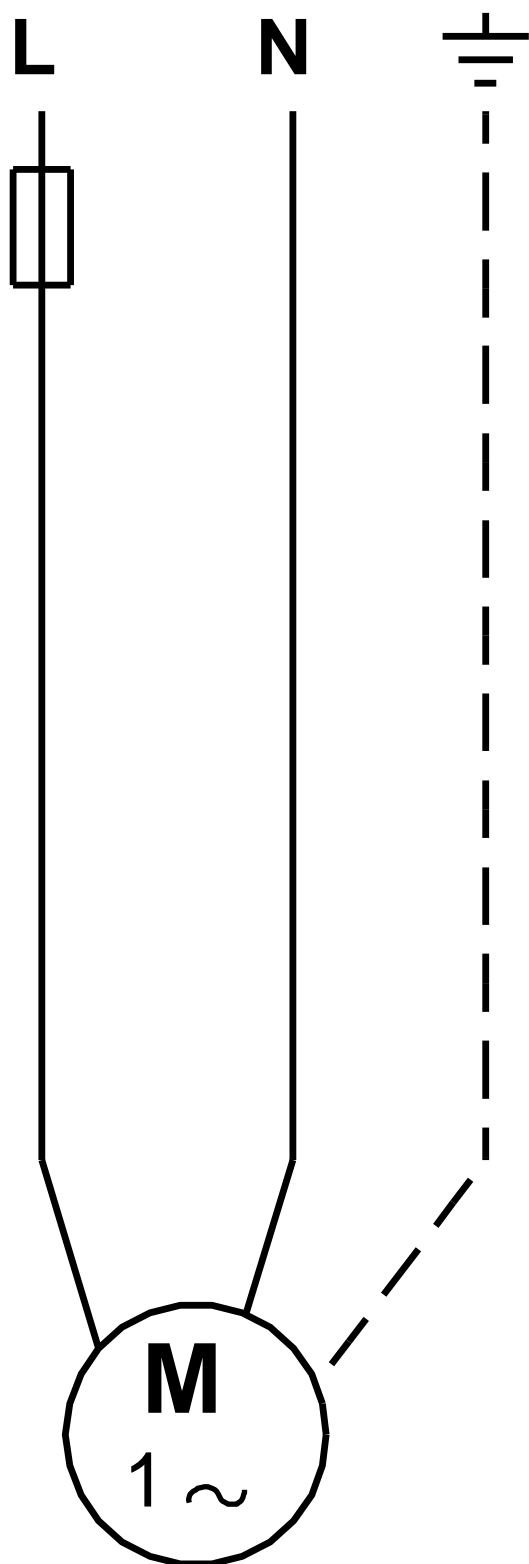


## On request ALPHA 15-55F 60 Hz



Note! All units are in [mm] unless others are stated.  
Disclaimer: This simplified dimensional drawing does not show all details.

On request ALPHA 15-55F 60 Hz



Note! All units are in [mm] unless others are stated.



Company name:

Created by:

Phone:

Date:

28/11/2017

---

**Order Data:**

Product name: ALPHA 15-55F

Amount: 1

Product No: On request

Total: Price on request

---