



MOLD RESISTANT* COATING



EnviroSHIELD™
Mold-Resistant Coating (White)
3.5 Gallon



EnviroSHIELD™
Mold-Resistant Coating (Clear)
3.5 Gallon



WATERLESS MASONRY CLEANER

Heavy-Duty
Latex Poultice



EnviroSHIELD™
Masonry Cleaner
1 Gallon



EnviroSHIELD™
Masonry Cleaner
5 Gallon



ODOR & SMOKE BLOCKER



EnviroSHIELD™
Odor & Stain Blocker (White)
5 Gallon



EnviroSHIELD™
Odor & Smoke Blocker (Clear)
5 Gallon

*Contains a mildewcide to prevent the growth of mold and mildew on the paint film only.



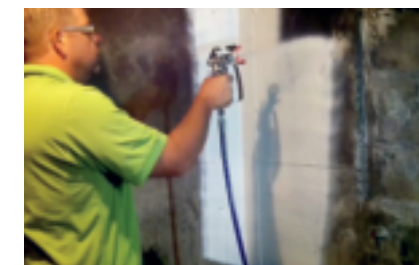
Innovative Solutions for the Restoration Professional

RUST-OLEUM
CORPORATION

11 Hawthorn Pkwy., Vernon Hills, IL 60061
800-323-3584 rustoleum.com/enviroshield

© 2017 Rust-Oleum Corporation

322933 1017



Innovative Solutions for the Restoration Professional



EnviroShield™ Masonry Cleaner is formulated with natural rubber and intended for the removal of heavy dirt, grime, soot, nicotine and stains on limestone, sandstone, marble, concrete, plaster, brick and terra cotta. Designed for both interior and exterior use, its waterless application makes it a very safe, effective acid-free solution that can be used virtually anywhere without making a mess. It is specifically formulated to work below the surface and pull out ugly stains that penetrated deep into the pores of most masonry material.

Application Procedures

Test Area
Always prepare a test area prior to full application. This will indicate the time required for project completion and suitability of product for effective cleaning of the substrate.

Equipment and Tools
Apply with brush, roller or sprayer. An airless sprayer is the most effective means of application. Use only airless equipment with chemical-resistant packing. This product requires airless equipment capable of delivering 0.9 gpm or higher. Entry-level airless sprayers may not be powerful enough to atomize latex properly. Equip the sprayer with a minimum tip size of 0.015 inches or 0.017 inches. (Example: a 415 or 517 tip.)

- EnviroSHIELD™ Waterless Poultice Latex Masonry Cleaner
- Water-based
 - No water required
 - Apply, let dry and peel off
 - Effective on smoke, dirt, soot, nicotine and more



SKU#	Size	Description	UPC
ESMCNPL1	1 Gallon	EnviroShield - Waterless Masonry Cleaner	020066 369705
ESMCNPL5	5 Gallon	EnviroShield - Waterless Masonry Cleaner	183325 000877

Preparation
MASKING: Cover areas where cleaning is not desired, including adjoining surfaces where overspray may travel. Plastic (polyethylene) sheets make a very effective barrier. Plants should be covered before and during application.

MIXING: If product has separated, mix the EnviroShield™ Masonry Cleaner with a drill. DO NOT SHAKE. DO NOT DILUTE.

Application
Apply a thick, even layer of EnviroShield™ Masonry Cleaner onto the substrate to be cleaned. An airless sprayer is the most effective means of application. Always start the sprayer pump at the lowest pressure setting and slowly build up the pressure until an adequate fan pattern has been generated. The minimum wet film thickness should be 62 mils (1/16 inch). However, required thickness may vary. If product is applied too thin, it will be more difficult to remove. Always test to ensure sufficient peel. Once applied, let dry. When applying EnviroShield™ Masonry Cleaner by brush, build a thick uniform layer to ensure even cleaning and ease of removal.

Dwell Time
The time required for the EnviroShield™ Masonry Cleaner to cure to a latex film will vary depending on temperature, thickness of application and relative humidity. Product applied on a substrate at 68°F with 90% relative humidity will be dry in approximately 24 hours. Once product has dried completely, it will appear yellow and is rubbery to the touch. Do not leave the product on more than 5 days after polymerization. Do not apply to exterior surfaces if temperature is above 90°F and in direct sunlight.

Limitations
DO NOT ALLOW PRODUCT TO FREEZE! Recommended surface temperature of 50 - 90°F (10 to 32°C). Dry time will increase at lower temperatures. If applied to polished surfaces, the polish will be removed.



EnviroSHIELD™ Odor & Smoke / Stain Blocker coatings are designed for professionals and certified applicators to permanently encapsulate odors from fire, smoke, animals, nicotine and mildew. In addition, the white formula effectively covers and blocks difficult stains. These water based coatings offer easy clean up and are low odor and low VOC.

- EnviroSHIELD™ Odor & Smoke / Stain Blocker
- Seals in offensive fire, animal and mildew odors
 - White formula covers and blocks stains
 - Low odor, low VOC
 - Water based / easy clean up

Test Comparison Results



Where to Use
Seal most construction materials including treated and untreated lumber, OSB, particle board, masonry surfaces, concrete, brick, wallboard and composite construction materials. Probable areas of use include crawlspaces, basements, attics and building envelopes. Surfaces within these areas include sheathing, trusses, framing, joists, plates, pillars, posts, beams and studs.

Application
Eye protection is recommended. Apply as supplied using a brush, roller or sprayer. Do not dilute. Only apply if surface, air and product temperatures are between 50°-90°F (10°-32°C). Stir thoroughly before and occasionally during use. Coat the entire surface to ensure a uniform appearance.

How to Apply
Brush: Nylon/Polyester Blend
Roller: Smooth Surfaces- 3/8”- 1/2” nap
Rough and Porous Surfaces- 1/2”- 3/4” nap
Airless Sprayer: Tip- .013”- .015”; Filter- 60 mesh

Pressure- 2,500 - 3,200 psi
Cleanup & Disposal
Clean equipment and spatters with warm water. If spilled, contain material and remove with an inert absorbent. Dispose of contaminated absorbent, container and unused product in accordance with all current federal, state and local regulations. Do not dispose of this product down a drain. For recycling or disposal information, contact your local refuse collection service.



EnviroSHIELD™ ES90 and ES100 are designed for restoration professionals and certified applicators to combat mold and mildew. These mold resistant coatings are ideal for new construction, remodeling or repair projects and contain advanced antimicrobial technology to prevent future mold and mildew growth on the coated surface.

Surface Preparation
Surface must be free from any dirt or loose foreign materials, oil, grease and standing water. Note: EnviroShield ES90/ES100 will promote water resistance and protect from stains, but will not correct mold and mildew associated with chronic water and moisture intrusion. Apply only to pH stable concrete (below 9.0).

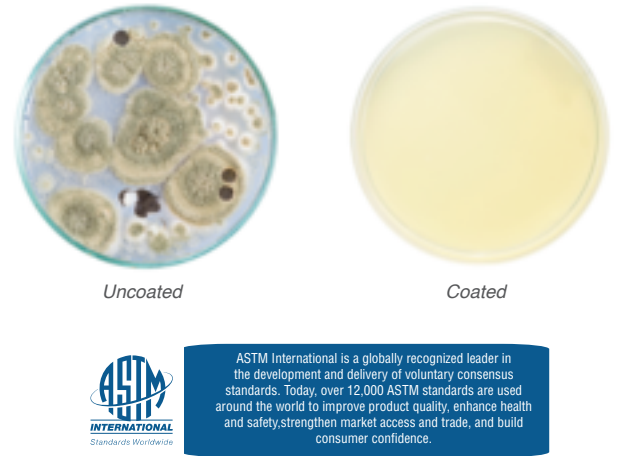
Application
Mix thoroughly prior to and intermittently during use. Be sure that any settled material is dispersed thoroughly into solution. Apply EnviroShield ES90/ES100 with a brush, roller or sprayer. Apply EnviroShield ES90/ES100 at up to 1,200 sq. ft. (111.5 m²) per gallon. For airless spraying, use a .015 tip and medium pressure. Apply when air and surface temperatures are 40-90°F (5-32°C). Only one coat is necessary; a second coat may be desired. Coverage rates vary depending on surface porosity, desired coverage and hiding.

Drying Time
At normal temperatures, dries to the touch in 30 minutes. High humidity and/or cool temperatures may lengthen the drying times. Re-coat in 20-30 minutes.

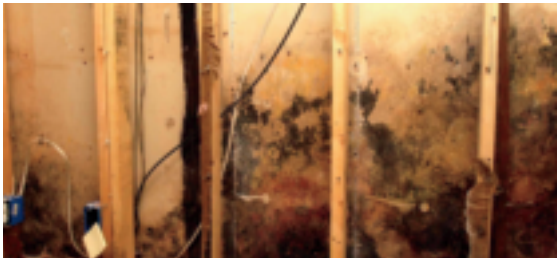
Limitation
This product does not protect users against illness caused by food borne bacteria. EnviroSHIELD™ does not warrant or guarantee that indoor air quality or health related issues will be reduced or eliminated. Exterior durability is limited to exposure and wear and is not covered by warranty.

Note
EnviroShield ES90/ES100 is formulated with an advanced biocide blend to prevent mold and mildew growth on the surface of the dried coating film only. EnviroShield ES90/ES100 does not contain any mercury or lead compounds. The guaranteed protection of the dried coating film from mold and mildew is a result of the biocide, the nature and durability of the resins and other formulation characteristics. *Contains a mix of biocides (PCP No. 27271, 30796).

Storage & Disposal
Keep container closed when not in use. Do not transfer contents to other containers for storage or disposal. Dispose of unused contents in accordance with local, state and federal regulations.



- EnviroSHIELD™ Mold Resistant Coatings
- ASTM* performance tested
 - Excellent coverage and hiding
 - Water-based / easy clean up
 - Dries quickly (Less than 30 min)
 - Available in clear and white



SKU#	Size	Description	UPC
ES10035	3.5 Gallon	EnviroShield - Clear	183325 000952
ES9035	3.5 Gallon	EnviroShield - White	183325 000945

*Contains a mildewcide to prevent the growth of mold and mildew on the paint film only.